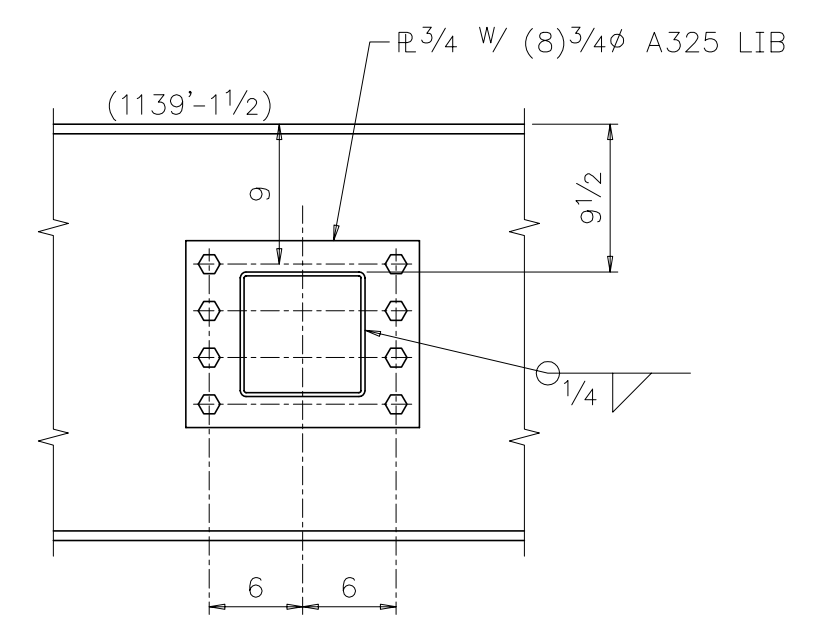
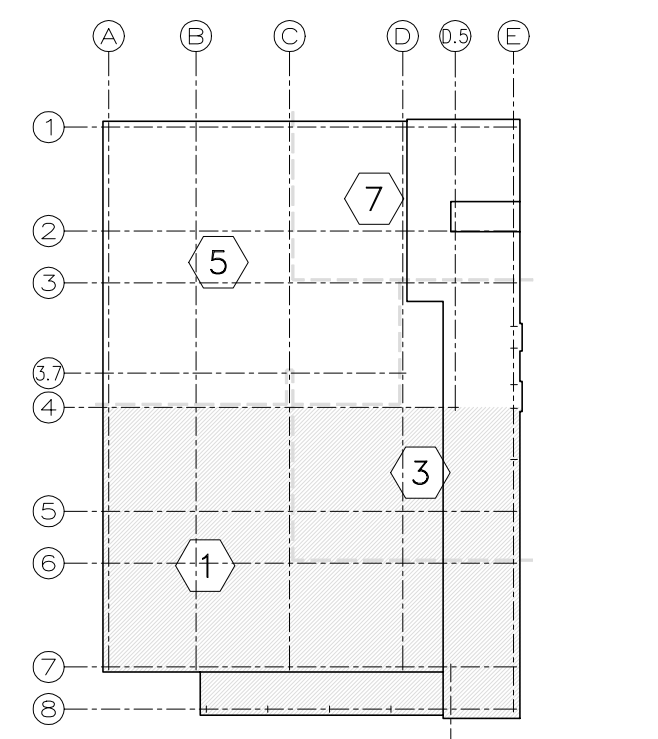


1 MOMENT CONNECTION DETAIL
E3



2 MOMENT CONNECTION DETAIL
E3



KEY PLAN

SECOND FLOOR FRAMING PLAN

TOP OF STEEL ELEVATION 1139'-1/2 TYPICAL UN.
 TOP OF STEEL ELEVATIONS ARE SHOWN ENCLOSED BY PARENTHESES "()".
 ELEVATIONS PRECEDED BY "+" OR "-" ARE WITH RESPECT TO TYPICAL ELEVATION.
 BEAM MIDSPAN UPWARD CAMBER DIMENSIONS ARE SHOWN INSIDE A CIRCLE OR ELLIPSE.
 SHEAR CONNECTOR STUD COUNTS ARE SHOWN ENCLOSED BY BRACKETS "[]" (SEE 1/E1).
 "BP" DENOTES BENT PLATE.
 ALL WF BEAMS ARE A572-50. ALL COLUMNS ARE A36.
 SEE E1 FOR ERECTION NOTES.
 SEE E11 FOR TYPICAL BENT R DETAIL.
 USE 1" A325 LIB BOLTS FOR CONNECTIONS NOTED THUS:
 SEE E13 FOR TYPICAL COLUMN SPLICE DETAILS.

STUD COUNT 2ND FLOOR (3/4" x 4 1/16"): 6225
 EDGE MATERIAL RECAP:
 289.8 LF of L-4x4x5/16
 21.1 LF of L-6x3 1/2x5/16
 8.9 LF of bent R (5/16x10 3/4x5 1/2-L4x4)
 231.8 LF of bent R (5/16x17 1/8x5 1/2-L6x3 1/2)
 26.4 LF of bent R (5/16x19 1/8x5 1/2-L6x3 1/2)
 30.1 LF of bent R (5/16x19 1/8x5 1/2-L6x6)
 35.1 LF of bent R (5/16x24 3/4x5 1/2-L6x3 1/2)
 52.4 LF of bent R (5/16xVARIESx5 1/2)
 2.4 LF of bent R (L 5/16x10 1/4x5 1/2)
 9.0 LF of bent R (L 5/16x11x5 1/2)
 30.0 LF of bent R (L 5/16x10 3/8x5 1/2)
 2.3 LF of bent R (L 5/16x15 3/4x5 1/2)
 62.4 LF of bent R (L 5/16x17 1/8x5 1/2)
 10.4 LF of bent R (L 5/16x19 1/8x5 1/2)
 7.3 LF of bent R (L 5/16x3 1/4x5 1/2)
 87.8 LF of bent R (L 5/16x4 3/4x5 1/2)
 15.2 LF of bent R (L 5/16x5 1/4x5 1/2)
 1.4 LF of bent R (L 5/16x5 1/4x7)
 9.0 LF of bent R (L 5/16x6 7/8x5 1/2)
 18.7 LF of bent R (L 5/16x6 3/4x5 1/2)
 21.2 LF of bent R (L 5/16x7 3/4x5 1/2)
 78.4 LF of TS1 1/2x1 1/2x1/8

BLOCK COUNT:
 (3) BEAM EMBED
 (78) EMBED IP5
 (1) W10X33
 (16) W14X139
 (5) W14X102
 (1) W14X145
 (21) W14X68
 (9) W14X90

Fabarco Steel Supply, Inc. ANNISTON, ALABAMA			STRUCTURE COBB COUNTY STATE COURT BUILDING	
PRINT RECORD QUANT. DATE FOR 4/1 12/9 APP 1S 12/19 APP			DETAIL SECOND FLOOR FRAMING PLAN	
CONTRACTOR WINTER CONSTRUCTION			OWNER COBB COUNTY, GEORGIA	
OWNER COBB COUNTY, GEORGIA			ENG. OR ARCH. HEERY	
REVISIONS 1 2 3 4			SHOP ORDER 5-103	
SHEET NO. E3				

FABARC will detail and/or design connections not furnished on design drawings; however such connections developed by FABARC are only to accommodate fabricating shop equipment and procedures. Responsibility for design of the structure, including design of connections, shall remain with the Architect and Engineer of record. FABARC and its detainers, not being designers of steel, shall have no final design responsibilities whatsoever.

ALL ERRORS IN FABRICATION MUST BE REPORTED TO THE FABRICATOR WITHIN 24 HOURS FOR DECISION AS TO THE BEST METHOD OF CORRECTION. BACK CHARGES WILL NOT BE ACCEPTED UNLESS OUR CONSENT IS GIVEN IN ADVANCE IN WRITING.