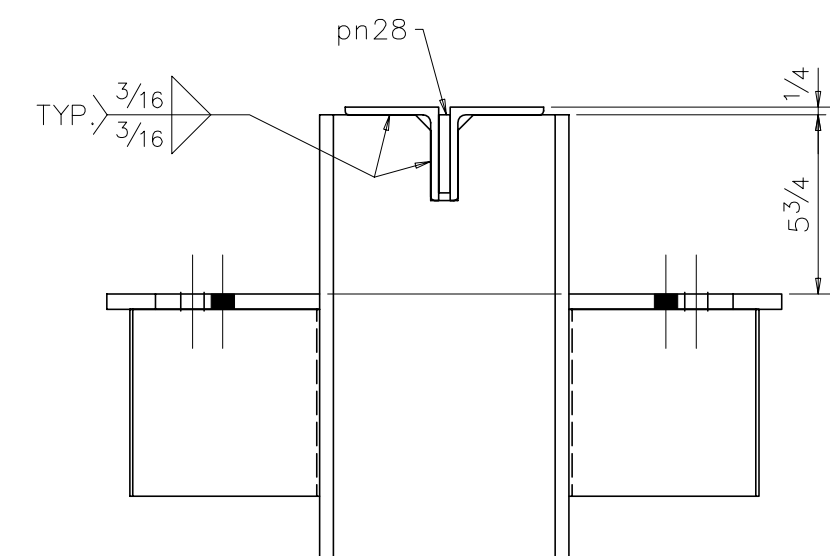
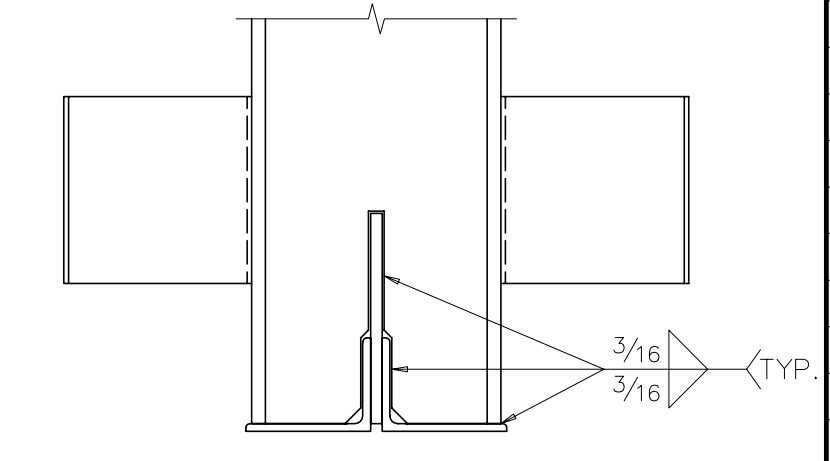


SECTION 8



SECTION 9



SECTION 10

BILL OF MATERIAL						
MARK	NO. REQD.	SIZE	WT/FT	LENGTH	WEIGHT	REMARKS
28T1	7	TRUSSES				
aa28	14	L3x3x1/4	4.9	42'-6 1/4	2917	
ab28	14	L3x3x1/4	4.9	4'-10 1/2	334	
ac28R/L	14	L3x3x1/4	4.9	7'-6	515	
ad28	14	L4x3x1/4	5.8	30'-0 1/8	2439	ROLLED
ae28	14	L4x3x1/4	5.8	16'-6 1/8	1341	ROLLED
af28	14	L2x2x1/4	3.19	7'-7 3/4	341	
ag28	14	L2x2x1/4	3.19	6'-2 3/4	278	
ah28	14	L2x2x1/4	3.19	6'-9 1/2	303	
ak28	14	L2x2x1/4	3.19	4'-4 3/4	196	
am28	14	L2x2x1/4	3.19	5'-8	253	
an28	14	L2x2x1/4	3.19	3'-0 5/8	136	
ap28R/L	14	L2x2x1/4	3.19	4'-3 3/4	193	
ar28R/L	14	L2x2x1/4	3.19	3'-7	160	
as28	14	L2x2x1/4	3.19	2'-0 1/2	91	
at28R/L	14	L2x2x1/4	3.19	3'-1	138	
au28	14	L2x2x1/4	3.19	1'-11 1/8	86	
av28R/L	14	L2x2x1/4	3.19	2'-8 11/16	122	
aw28	14	L2x2x1/4	3.19	2'-0 3/8	91	
ax28R/L	14	L2x2x1/4	3.19	3'-2	141	
ay28	14	L2x2x1/4	3.19	2'-7	115	
az28	14	L2x2x1/4	3.19	3'-3 1/4	146	
aaa28	14	L2x2x1/4	3.19	3'-5 1/4	154	
abb28	14	L2x2x1/4	3.19	4'-4 1/4	194	
pa28	7	R 3/8x11 1/2	14.7	9'-8	992	TEMPLATE
pb28	49	BAR6x3/8	7.7	0'-11	344	
pc28	7	R 3/8x7 1/2	9.6	1'-3	84	BC
pd28	14	R 1/2x6 15/16	11.8	0'-8	110	BC
pe28	14	BAR6x1/2	10.2	0'-6 1/8	73	
pf28	14	BAR6x3/4	15.3	0'-6	107	
pg28	7	R 3/8x8	10.2	0'-11	65	
ph28	7	BAR1x1/4	0.9	0'-6	3	BACKING BAR
pk28	42	BAR6x3/8	7.7	1'-2	375	
pm28	7	R 3/8x13 3/4	17.5	4'-11 11/16	610	TEMPLATE
pn28	210	BAR2 1/2x3/8	3.2	0'-3	167	
pp28	231	BAR1 1/2x3/8	1.9	0'-3	110	
pr28	14	BAR3x3/8	3.8	0'-7	31	
ps28	14	R 3/8x7 3/4	9.9	0'-7 15/16	92	
					13847	

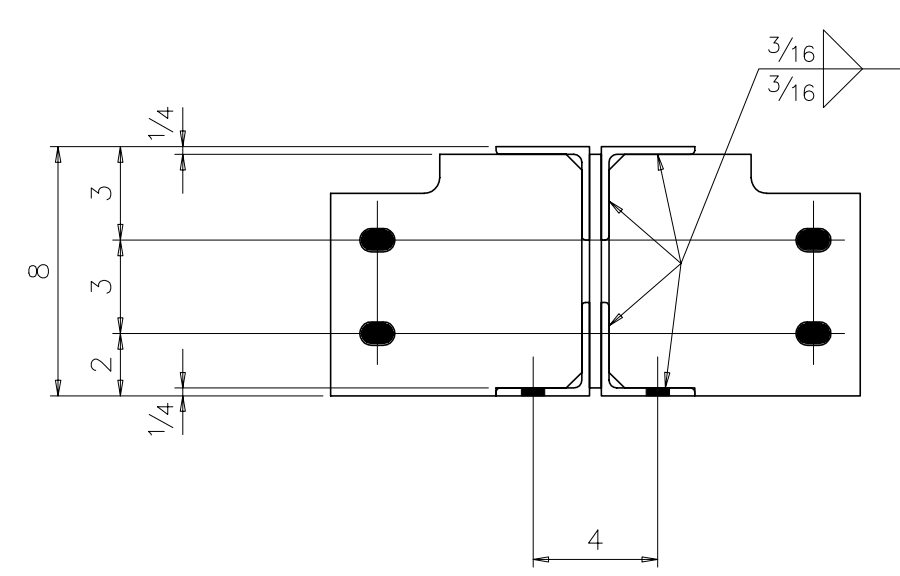
FIELD BOLTS:
(14) 3/4" Ø x 2 1/4" A325 W/N&W

SHOP NOTE:
ALL ROLLED MATERIAL IS BILLED TO FINISHED LENGTH. CUT MATERIAL TO THE PROPER LENGTH TO ALLOW FOR ROLLING REQUIREMENTS.

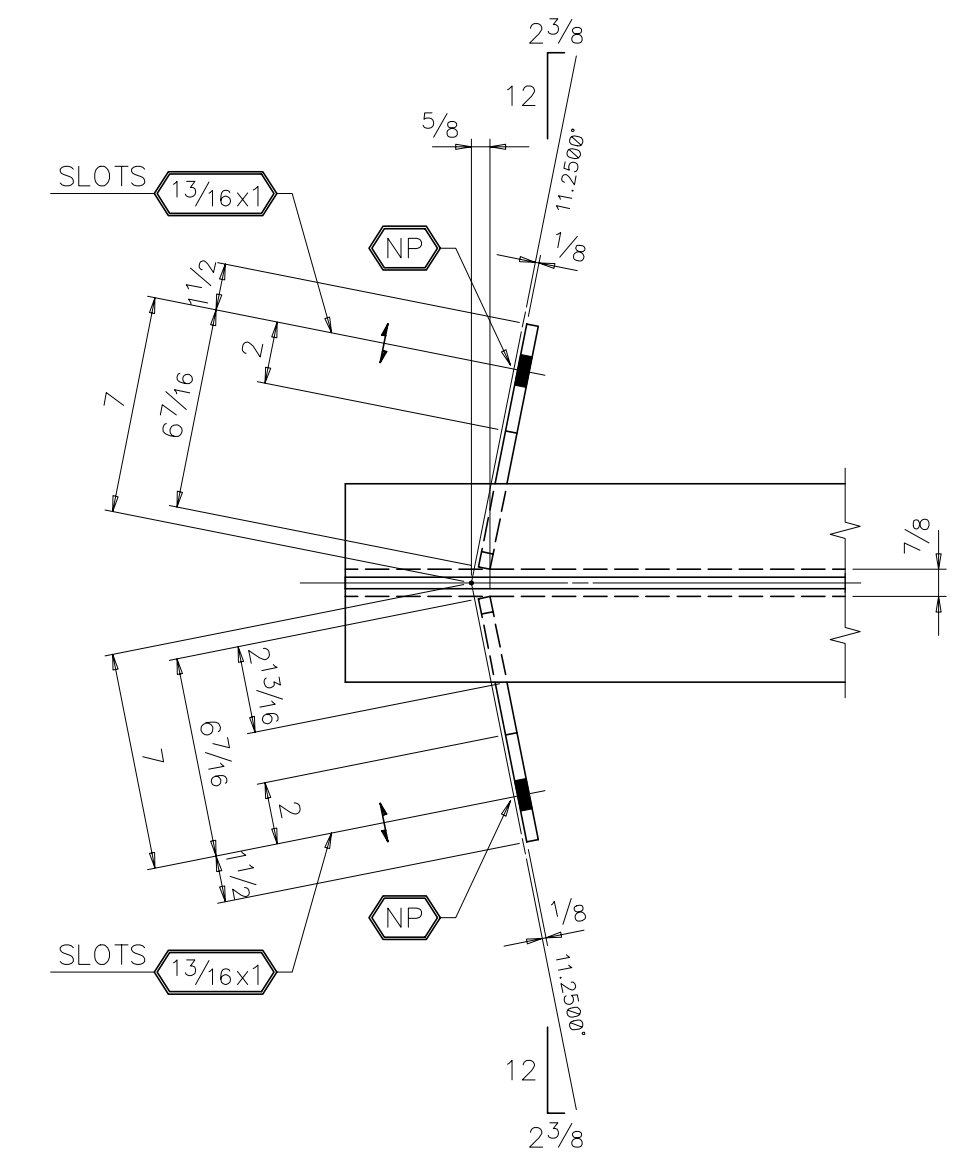
SHOP NOTE:
NO PAINT WITHIN 3" OF OPEN HOLES NOTED THIS:

WORK THIS SHEET WITH SHEET 28.

HICKORY STEEL, INC. STRUCTURAL STEEL & MISCELLANEOUS FABRICATORS AND ERECTORS	
NASHVILLE	TENNESSEE
PROJECT	CONGREGATION MICAH
LOCATION	NASHVILLE, TN
ARCHITECT	MICHAEL LANDAU ASSOC., P.A.
CUSTOMER	THE PARENT CO.
REVISIONS	PAIN 1 S/C RED OXIDE UN
DRAWN BY	BV DATE 4/96
CHECKED BY	DG DATE 4/96
PRINT RECORD	HOLES 1316- UN WELD E70xx
ORDER NO.	3309 DRAWING NO. 29



SECTION 12



SECTION 11

- TRUSS NOTES:
- ALL CHORD AND WEB STITCHES ARE TO BE EQUALLY SPACED BETWEEN POINTS OF ATTACHMENT.
 - NO CAMBER IS REQUIRED.
 - ALL CUTS ON GUSSET PLATES ARE TO BE AT 45- (12 TO 12) WITH RESPECT TO THE PLATE LENGTH UNLESS DIMENSIONED OTHERWISE.
 - RETURN WELDS AT CORNERS 1/2".
 - ALL WELDS SHOWN ARE EFFECTIVE SIZE AND LENGTH.
 - ALL ARC DIMENSIONS ARE MEASURED ALONG NEUTRAL AXIS.