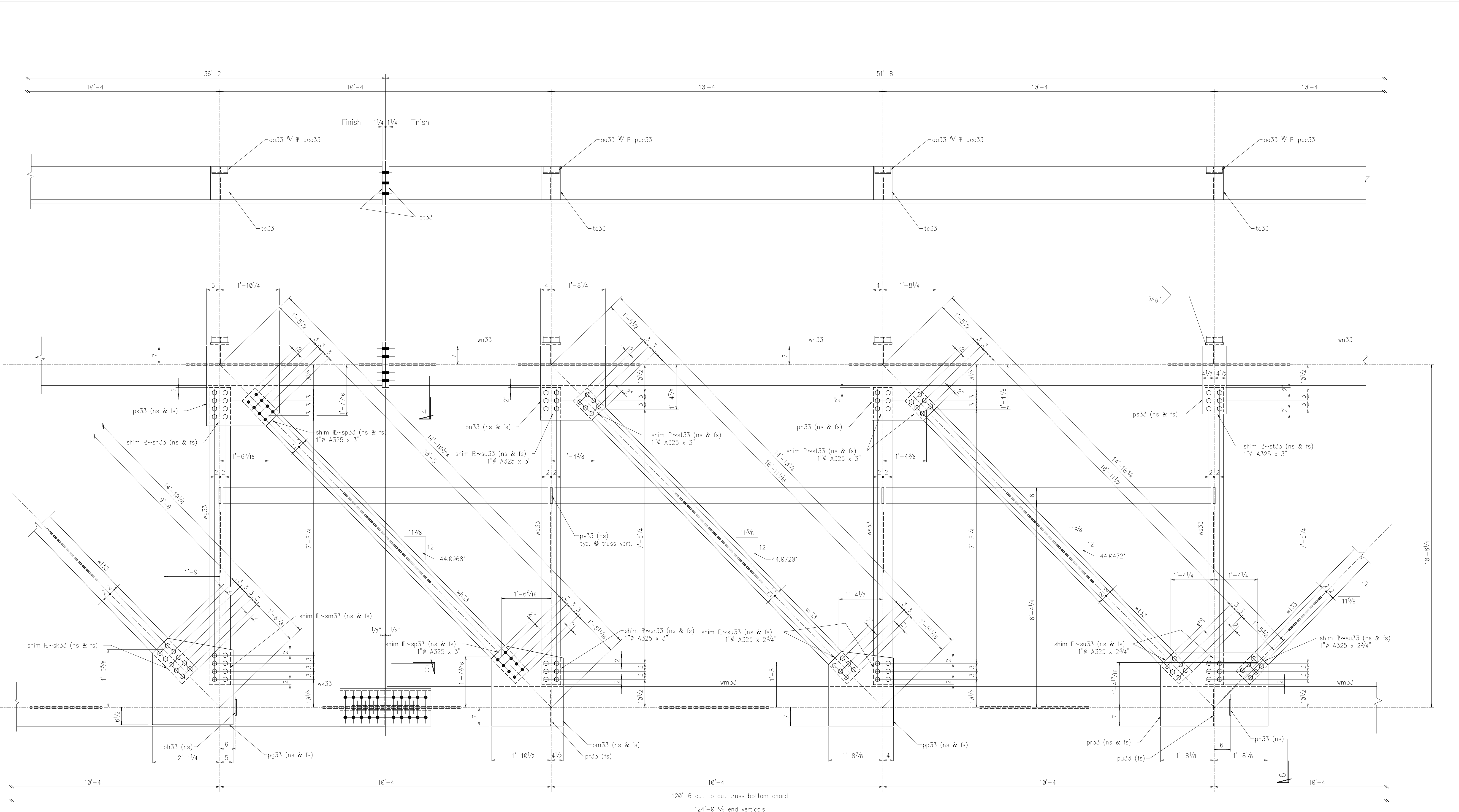


One ~ Truss ~ 33A
Truss T1

NO PAINT WITHIN 3" OF ANY H.S. BOLT HOLE @ FAYING SURFACES

- NOTES:
1. Work this sheet w/ sheets 34 thru 37.
 2. All shop bolts 1" A325 w/ hard washer under the turned element.
 3. Camber truss 2" @ 1/2 of span. Truss dimensions have been adjusted for camber.
 4. All shipping pieces are to be match marked for field assembly.
 5. All shop bolts are 3/4" long un. ntd.
 6. All gusset Bs are to be pre-punched w/ standard size holes. All web members are to be positioned and match drilled.
 - 7.
 - 8.
 - 9.
 - 10.

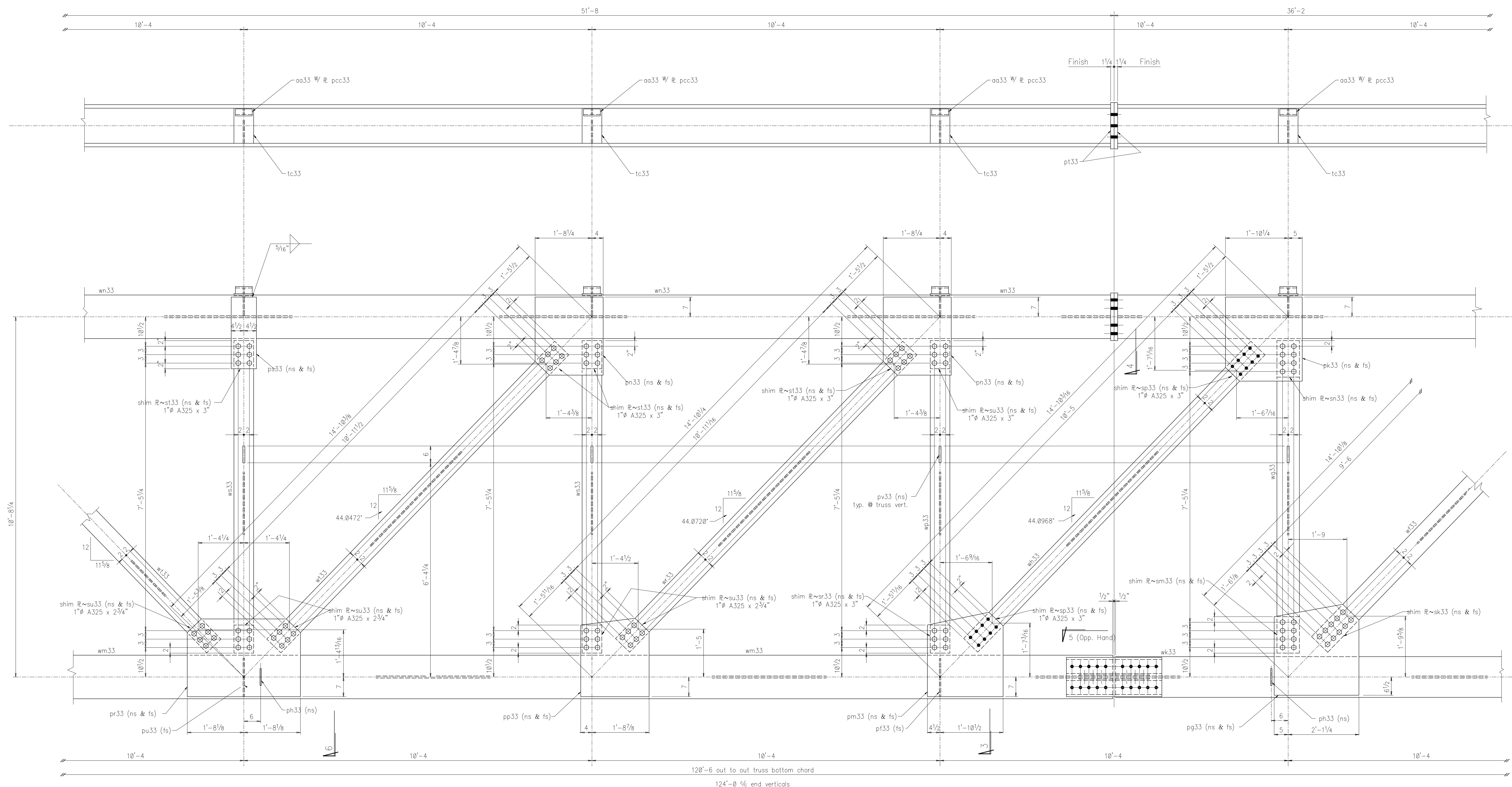
KINGSTON STEEL INCORPORATED KINGSTON SPRINGS, TN.	
JOB	Starwood Amphitheatre
LOCATION	Nashville, Tennessee
ARCHITECT	Gele/Sustaita
CUSTOMER	R.L. Scobey
DRAWN BY	B. Vaughan
CHECKED BY	DG
DATE	
PRINT RECORD	
	PAINT 1 S/C
	Red Oxide
	HOLES 1/16"Ø UNLESS NOTED
	WELD E70xx UNLESS NOTED
	JOB NO. 8601
	SHEET



NO PAINT WITHIN 3" OF ANY H.S. BOLT HOLE @ FAYING SURFACES

- NOTES:
1. Work this sheet w/ sheets 34 thru 37.
 2. All shop bolts 1" A325 w/ hard washer under the turned element.
 3. Camber truss 2" @ C of span. Truss dimensions have been adjusted for camber.
 4. All shipping pieces are to be match marked for field assembly.
 5. All shop bolts are 3/4" long un. ntd.
 6. All gusset R's are to be pre-punched w/ standard size holes. All web members are to be positioned and match drilled.
 - 9.
 - 10.
 - 11.
 - 12.

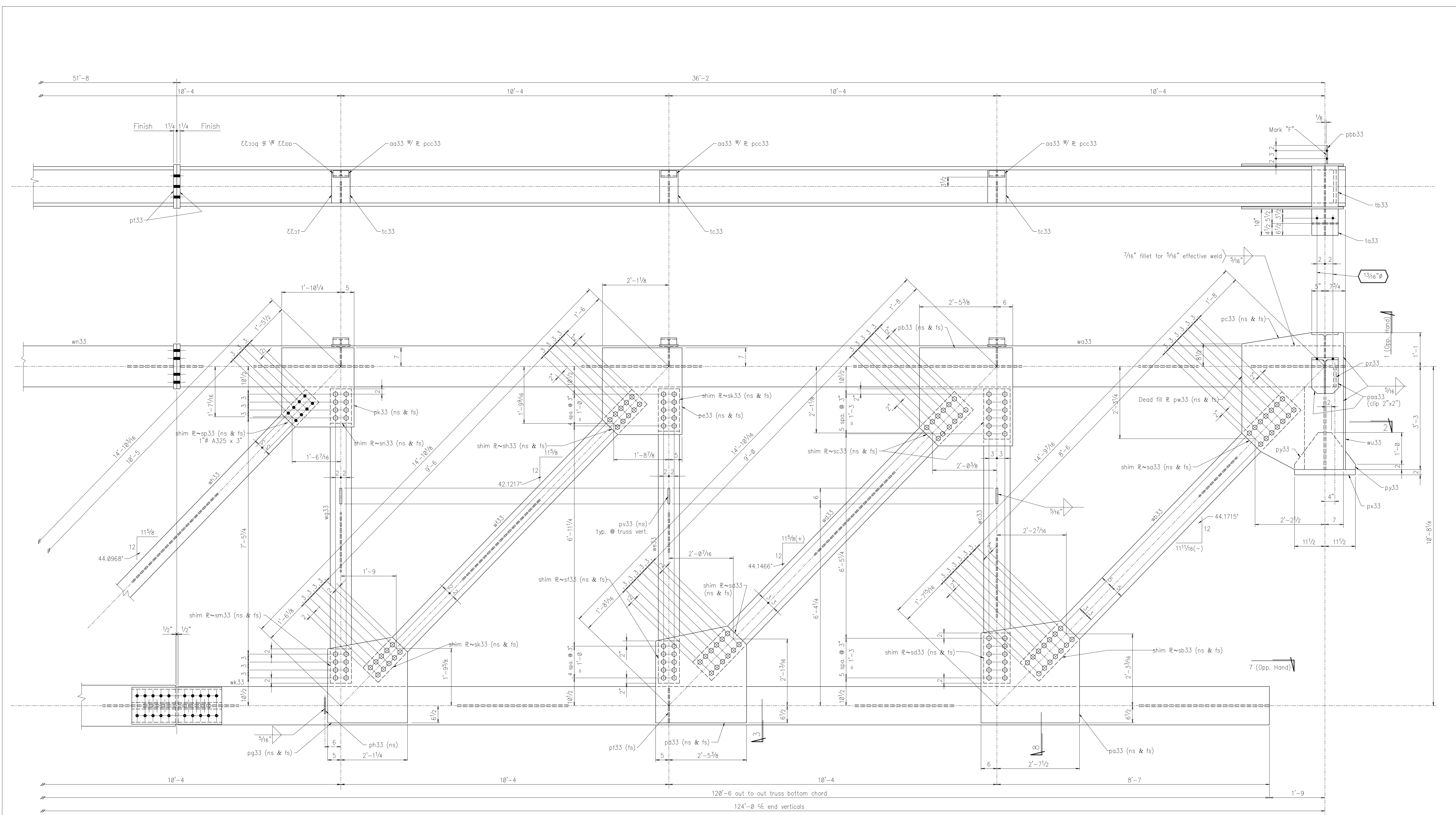
KINGSTON STEEL INCORPORATED KINGSTON SPRINGS, TN.	
JOB	Starwood Amphitheatre
LOCATION	Nashville, Tennessee
ARCHITECT	Gele/Sustaita
CUSTOMER	R.L. Scobey
DRAWN BY	B. Vaughan
CHECKED BY	DG
DATE	
PRINT RECORD	
PAINT 1 S/C Red Oxide	
HOLES 1/16"φ UNLESS NOTED	
WELD E70xx UNLESS NOTED	
JOB NO. 8601	
SHEET	



NO PAINT WITHIN 3" OF ANY H.S. BOLT HOLE @ FAYING SURFACES

- NOTES:
1. Work this sheet w/ sheets 33, 34, 36 and 37.
 2. All shop bolts 1" A325 w/ hard washer under the turned element.
 3. Camber truss 2" @ C of span. Truss dimensions have been adjusted for camber.
 4. All shipping pieces are to be match marked for field assembly.
 5. All shop bolts are 3/4" long un. ntd.
 6. All gusset Bs are to be prepunched w/ standard size holes.
 7. All web members are to be positioned and match drilled.
 - 8.
 - 9.
 - 10.
 - 11.
 - 12.

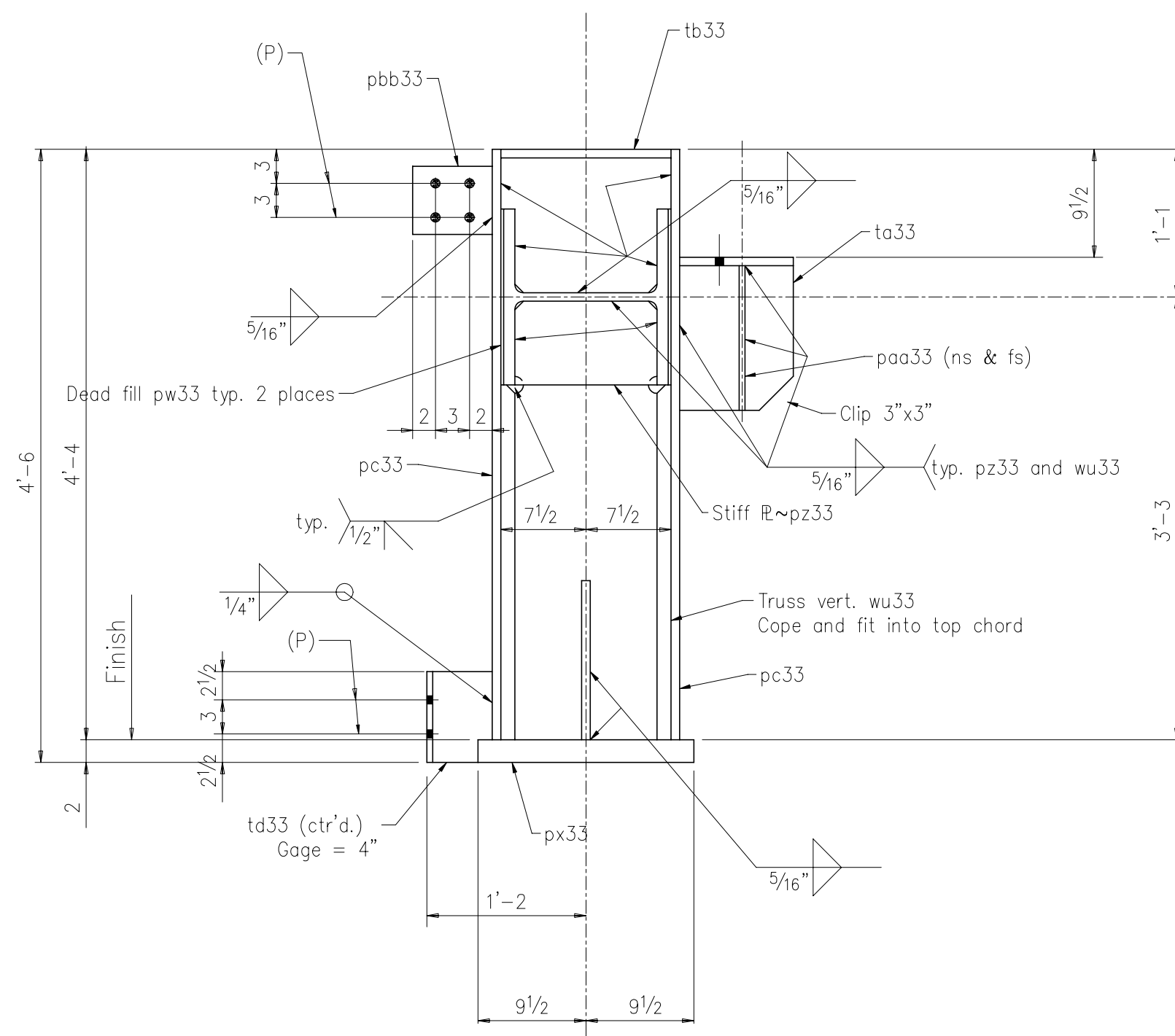
KINGSTON STEEL INCORPORATED KINGSTON SPRINGS, TN.	
JOB	Starwood Amphitheatre
LOCATION	Nashville, Tennessee
ARCHITECT	Gele/Sustaita
CUSTOMER	R.L. Scobey
DRAWN BY	B. Vaughan
CHECKED BY	DG
DATE	
PRINT RECORD	
	PAINT 1 S/C
	Red Oxide
	HOLES 1 1/16"Ø UNLESS NOTED
	WELD E70xx UNLESS NOTED
	JOB NO. 8601
	SHEET



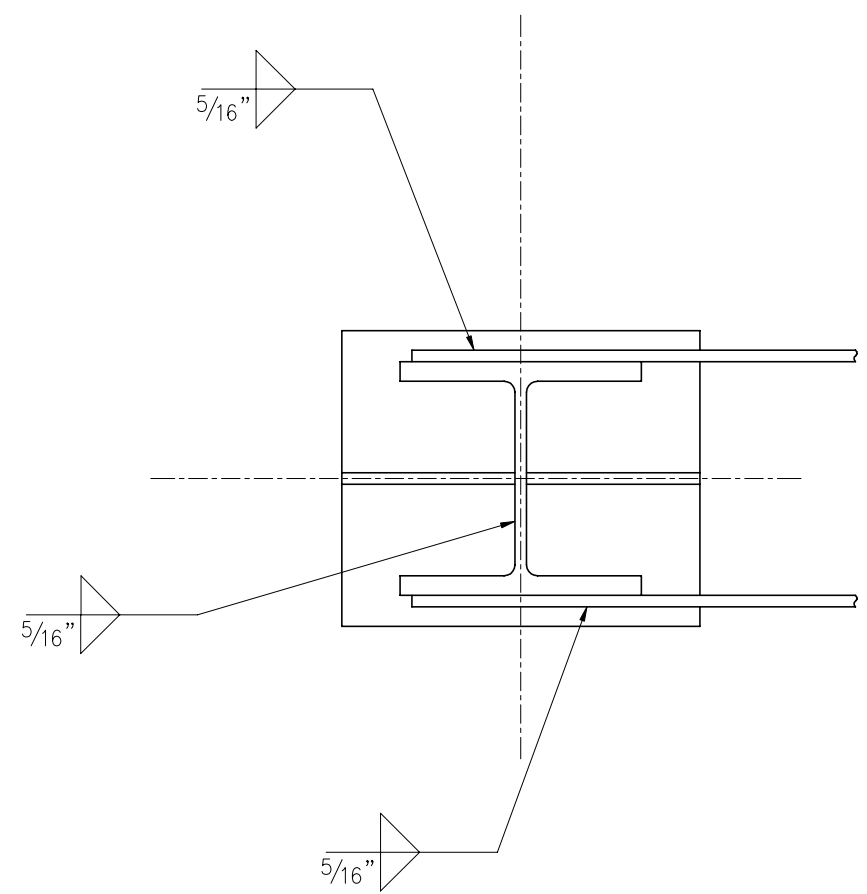
NO PAINT WITHIN 3" OF ANY H.S. BOLT HOLE @ FAYING SURFACES

- NOTES:
1. Work this sheet w/ sheets 33, 34, 35 and 37.
 2. All shop bolts 1" A325 w/ hard washer under the turned element.
 3. Camber truss 2" @ C of span. Truss dimensions have been adjusted for camber.
 4. All shipping pieces are to be match marked for field assembly.
 5. All shop bolts are 3/4" long un. ntd.
 6. All gusset Bs are to be prepunched w/ standard size holes. All web members are to be positioned and match drilled.
 - 7.
 - 8.
 - 9.
 - 10.

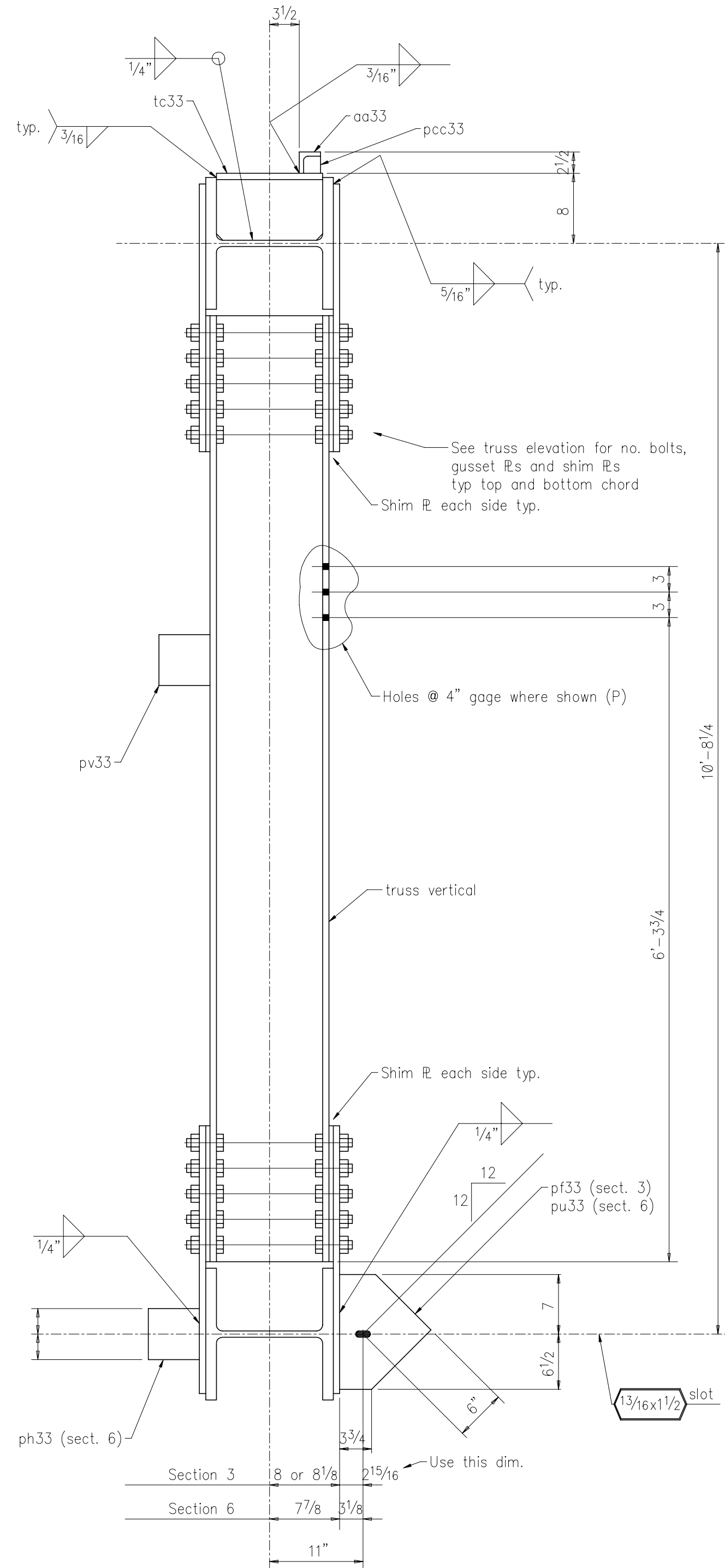
KINGSTON STEEL INCORPORATED KINGSTON SPRINGS, TN.	
JOB	Starwood Amphitheatre
LOCATION	Nashville, Tennessee
ARCHITECT	Gele/Sustaita
CUSTOMER	R.L. Scobey
DRAWN BY	B. Vaughan
CHECKED BY	DG
DATE	
PRINT RECORD	
	PAINT 1 S/C
	Red Oxide
	HOLES 1 1/16" Ø UNLESS NOTED
	WELD E70xx UNLESS NOTED
	JOB NO. 8601
	SHEET



Section 1

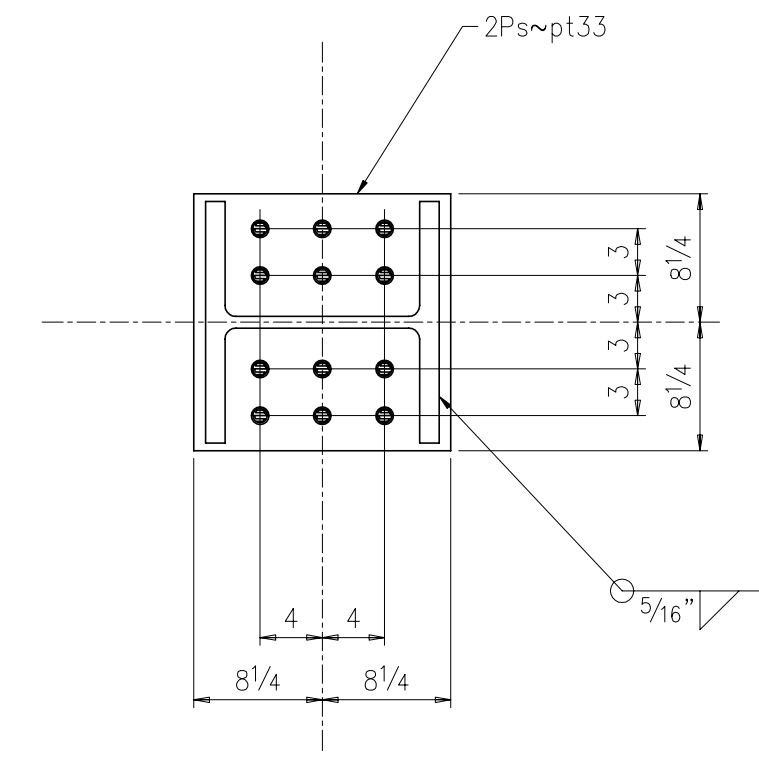


Section 2

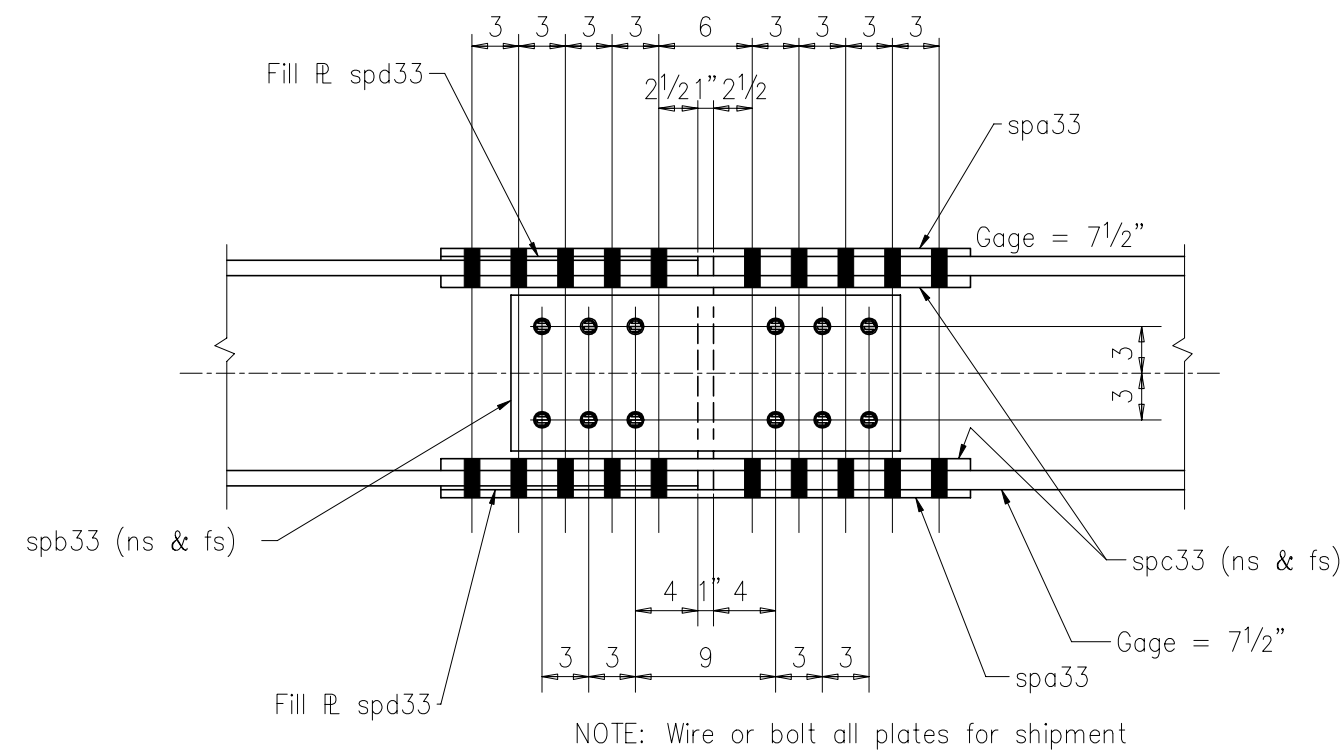


Section 3

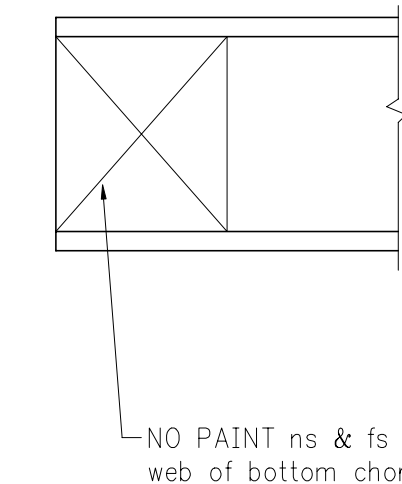
Section 6



Section 4
(24) 1"Øx4" A325 W/nut & wash.

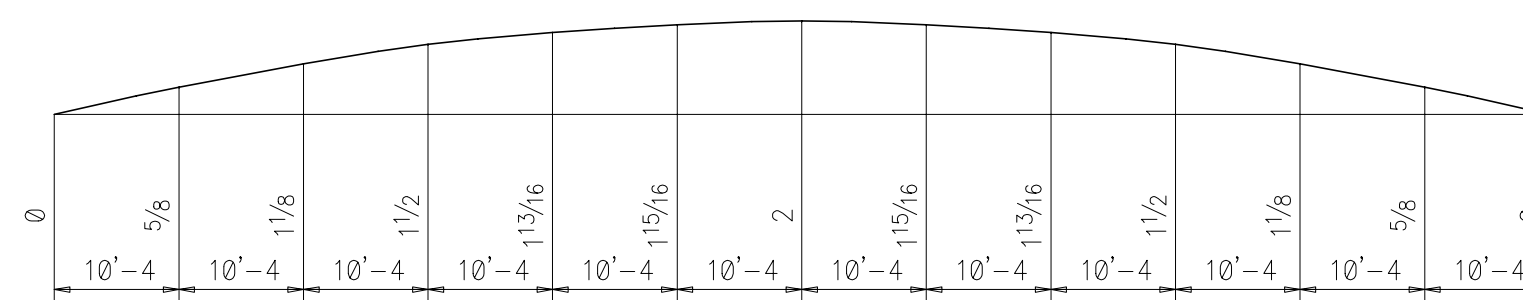


Section 5
(80) 3/4"Øx4" A325 W/nut & wash.
(24) 1"Øx2 3/4" A325 W/nut & wash.



Section 7

NO PAINT WITHIN 3" OF ANY H.S. BOLT HOLE @ FAYING SURFACES Un. Noted (P)



Camber Diagram

33A	One	Truss			
wa33	2	W14	145	36'-8 1/2"	F1E
wb33	2	W14	68	11'-10"	
wc33	2	W14	61	9'-3 1/4"	
wd33	2	W14	61	11'-10"	
we33	2	W14	53	9'-3 1/4"	
wf33	2	W14	43	12'-2"	
wg33	2	W14	43	9'-3 1/4"	
wh33	2	W14	38	12'-3"	
wk33	2	W14	120	34'-4 1/2"	
wm33	1	W14	145	51'-7"	
wn33	1	W14	159	51'-5 1/2"	F2E
wp33	2	W14	38	9'-3 1/4"	
wr33	2	W14	30	12'-3 1/16"	
ws33	3	W14	30	9'-3 1/4"	
wt33	2	W14	30	12'-3 1/2"	
wu33	2	W14	159	3'-2 5/8"	F1E
pa33	4	R	3/4" x 3 7/2"	3'-2 3/4"	
pb33	4	R	3/4" x 3 5 3/8"	3'-1"	
pc33	4	R	3/4" x 3 0 1/2"	4'-4"	
pd33	4	R	3/4" x 3 4 3/8"	3'-0 5/8"	
pe33	4	R	3/4" x 3 0 1/8"	2'-8 3/4"	
pf33	4	R	1/2" x 1 0 15/16"	1'-1 1/2"	
pg33	4	R	3/4" x 3 0 1/4"	2'-8 5/8"	
ph33	3	R	3/4" x 6"	0'-6"	
pk33	4	R	3/4" x 2 7 1/4"	2'-5 7/8"	
pn33	4	R	3/4" x 2 7"	2'-6"	
pm33	8	R	1/2" x 2 4 1/4"	2'-3 3/4"	
pp33	4	R	1/2" x 2 4 7/8"	2'-3 7/8"	
pr33	2	R	1/2" x 2 7 11/16"	3'-4 1/4"	
ps33	2	R	1/2" x 9"	2'-1 1/2"	
pt33	4	R	1 1/4" x 1 6 1/2"	1'-4 1/2"	
pu33	1	R	1/2" x 1 1 1/8"	1'-1 1/2"	
pv33	11	R	3/4" x 6"	0'-6"	
pw33	4	R	1/8" x 1 5 1/2"	3'-2 1/2"	
px33	2	R	2" x 1 9"	1'-11"	
py33	4	R	5/8" x 1 1 1/8"	1'-2"	
pz33	2	R	1" x 7 3/8"	1'-0 5/8"	
paa33	4	R	1/2" x 4 3/4"	1'-0 3/4"	
pbb33	2	R	1/2" x 6"	0'-7"	
pcc33	11	R	3/8" x 2 1/8"	0'-2 1/8"	
spa33	4	R	1/2" x 1 4"	2'-10"	
spb33	4	R	3/8" x 1 0"	2'-1"	
spc33	8	Bar	4" x 3/4"	2'-10"	
spd33	4	R	1/8" x 1 4"	1'-4 1/2"	
sa33	4	R	3/8" x 1 0"	1'-10"	
sb33	4	R	1/4" x 1 0"	1'-10"	
sc33	8	R	7/16" x 1 0"	1'-7"	
sd33	8	R	5/16" x 1 0"	1'-7"	
sf33	4	R	5/16" x 8"	1'-4"	
sh33	4	R	9/16" x 8"	1'-4"	
sk33	8	R	7/16" x 8"	1'-4"	
sm33	4	R	7/16" x 8"	1'-1"	
sn33	4	R	9/16" x 8"	1'-1"	
sp33	8	R	5/16" x 7"	1'-1"	
sr33	4	R	5/16" x 7"	0'-10"	
st33	14	R	9/16" x 7"	0'-10"	
su33	18	R	7/16" x 7"	0'-10"	
ta33	2	WT13.5	42	0'-10"	
tb33	2	Pc. WT13.5	42	1'-3"	
tc33	11	Pc. WT8	18	1'-0 5/8"	
td33	2	Pc. W8	24	0'-8"	
aa33	11	L-2 1/2 x 2 1/2 x 3/8	0'-6"		W/nut
	48	1"Ø A325	0'-2 3/4"		W/nut
	244	1"Ø A325	0'-3"		W/nut
	528	1"Ø A325	0'-3 1/4"		W/nut
	820	1" Hard. wash.			
		Field bolt recap this sheet:			
	104	1"Ø A325	0'-4"		W/nut
	64	1"Ø A325	0'-3"		W/nut
	24	1"Ø A325	0'-2 3/4"		W/nut
	192	1" Hard. wash.			

KINGSTON STEEL INCORPORATED KINGSTON SPRINGS, TN.			
JOB	Starwood Amphitheatre		
LOCATION	Nashville, Tennessee		
ARCHITECT	Gele/Sustaita		
CUSTOMER	R.L. Scobey		
DRAWN BY	B. Vaughan	PAINT 1 S/C	Red Oxide
CHECKED BY	DG		
DATE		HOLES 1 1/16"Ø	UNLESS NOTED
PRINT RECORD		WELD E70xx	UNLESS NOTED
		JOB NO.	8601
		SHEET	