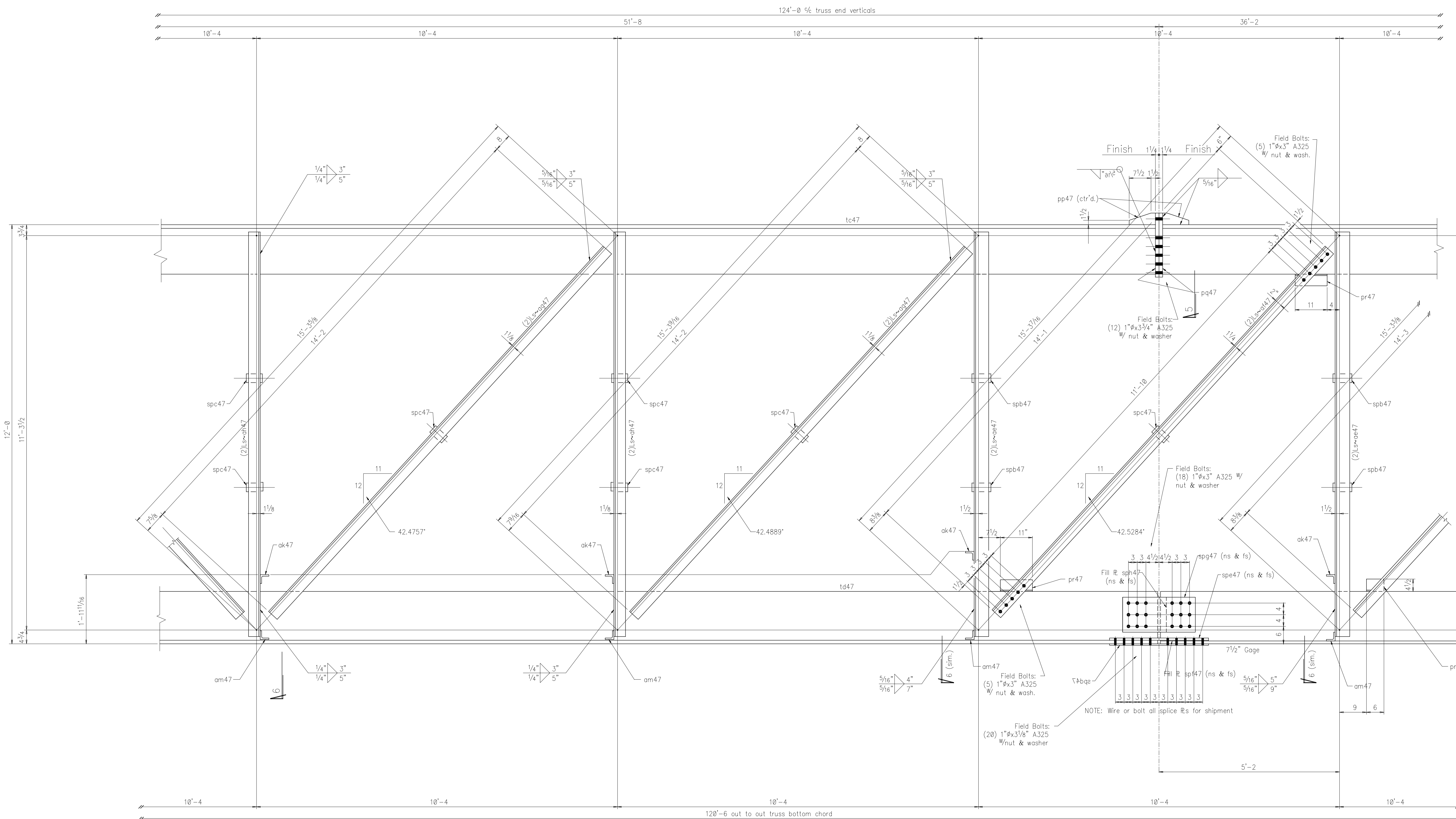


- NOTES:
1. Work this sheet w/ sheets 47, 49, 50 and 51.
 2. All field bolts are 1" ϕ A325 W hard washer under the turned element.
 3. Camber truss 2" ϕ $\frac{0}{16}$ of span. Truss dimensions have been adjusted for camber.
 4. All shipping pieces are to be match marked for field assembly.
 5. All stitch R's shall be equally spaced along length of member.
 6. Web member welds shown are typical at each end unless shown otherwise.
 8. All holes for field splices are to be match drilled 1/16" ϕ .
 - 8.
 - 9.

NO PAINT WITHIN 3" OF ANY H.S. BOLT HOLE @ FAYING SURFACES Un. Ntd. (P)

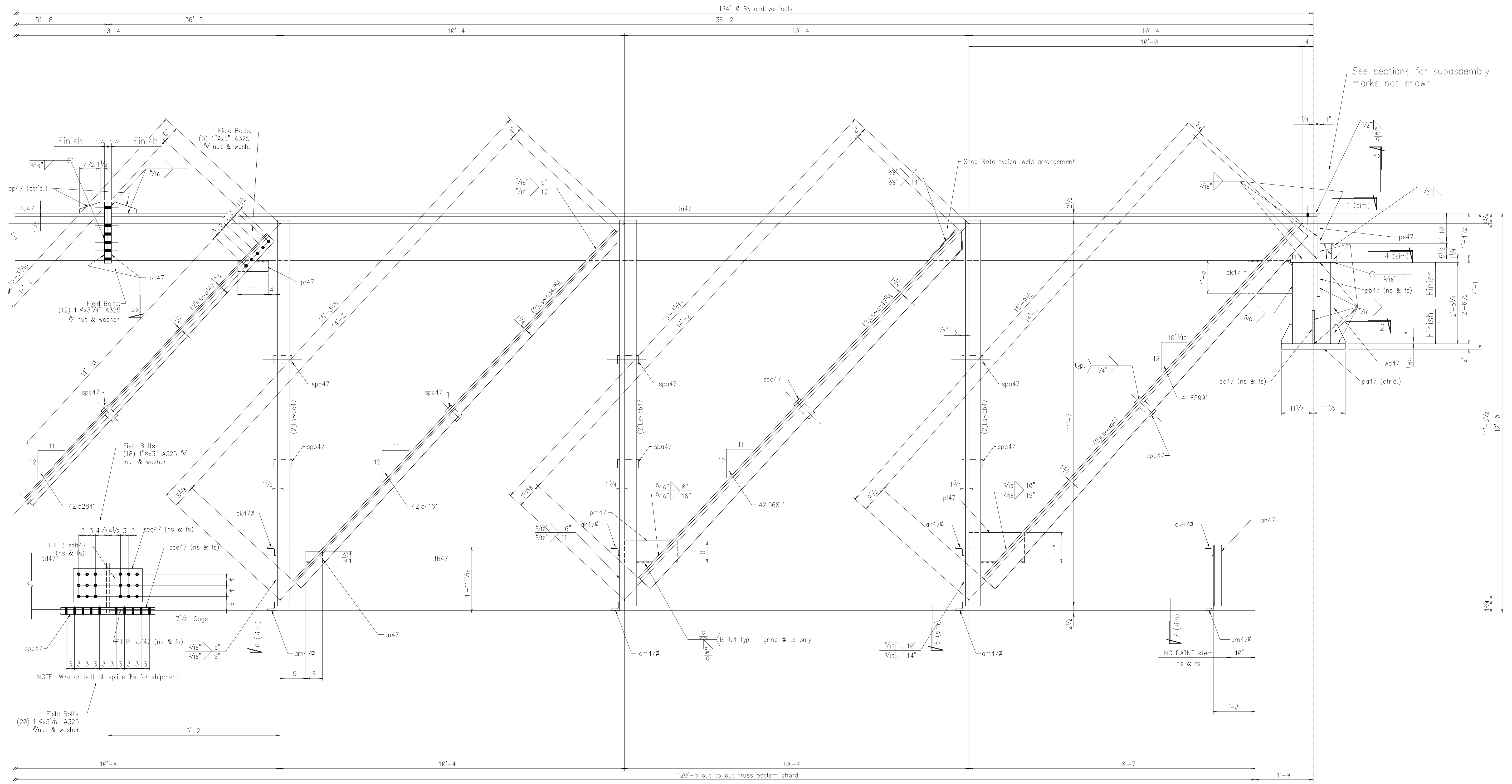
KINGSTON STEEL INCORPORATED KINGSTON SPRINGS, TN.	
JOB	Starwood Amphitheatre
LOCATION	Nashville, Tennessee
ARCHITECT	Gele/Sustaita
CUSTOMER	R.L. Scobey
DRAWN BY	B. Vaughan
CHECKED BY	DG
DATE	
PRINT RECORD	
	PAINT 1 S/C
	Red Oxide
	HOLES 1/16" ϕ UNLESS NOTED
	WELD E70xx UNLESS NOTED
	JOB NO. 8601
	SHEET



- NOTES:
1. Work this sheet w/ sheets 47, 48, 50 and 51
 2. All field bolts are 1" A325 w/ hard washer under the turned element.
 3. Camber truss 2" @ 6" of span. Truss dimensions have been adjusted for camber.
 4. All shipping pieces are to be match marked for field assembly.
 5. All splice R's shall be equally spaced along length of member.
 6. Web member welds shown are typical at each end unless shown otherwise.
 8. All holes for field splices are to be match drilled 1 1/16" Ø.
 - 8.
 - 9.

NO PAINT WITHIN 3" OF ANY H.S. BOLT HOLE @ FAYING SURFACES Un. Ntd. (P)

KINGSTON STEEL INCORPORATED KINGSTON SPRINGS, TN.	
JOB	Starwood Amphitheatre
LOCATION	Nashville, Tennessee
ARCHITECT	Gele/Sustaita
CUSTOMER	R.L. Scobey
DRAWN BY	B. Vaughan
CHECKED BY	DG
DATE	
PRINT RECORD	
	PAINT 1 S/C
	Red Oxide
	HOLES 1 1/16" Ø UNLESS NOTED
	WELD E70xx UNLESS NOTED
	JOB NO. 8601
	SHEET



Field Bolts:
(5) 1" x 3/8" A325
w/ nut & wash.

Field Bolts:
(12) 1" x 3/8" A325
w/ nut & washer

Field Bolts:
(18) 1" x 3/8" A325
w/ nut & washer

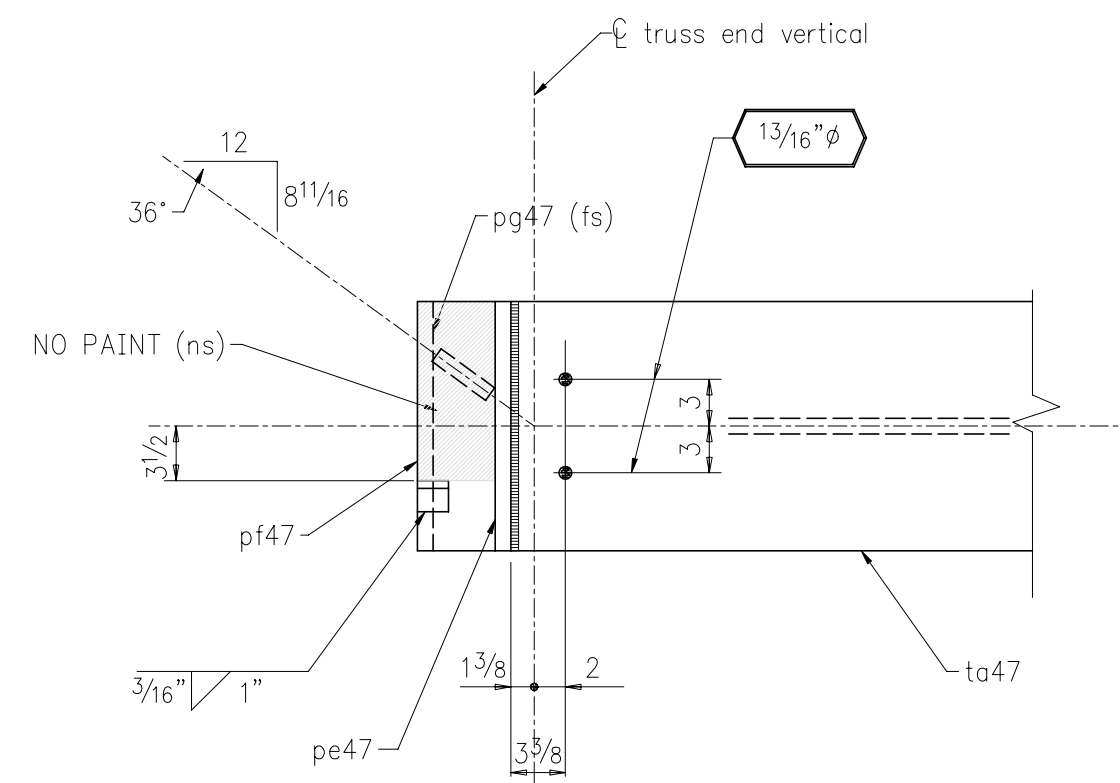
Field Bolts:
(20) 1" x 3/8" A325
w/ nut & washer

NOTE: Wire or bolt all splice R's for shipment

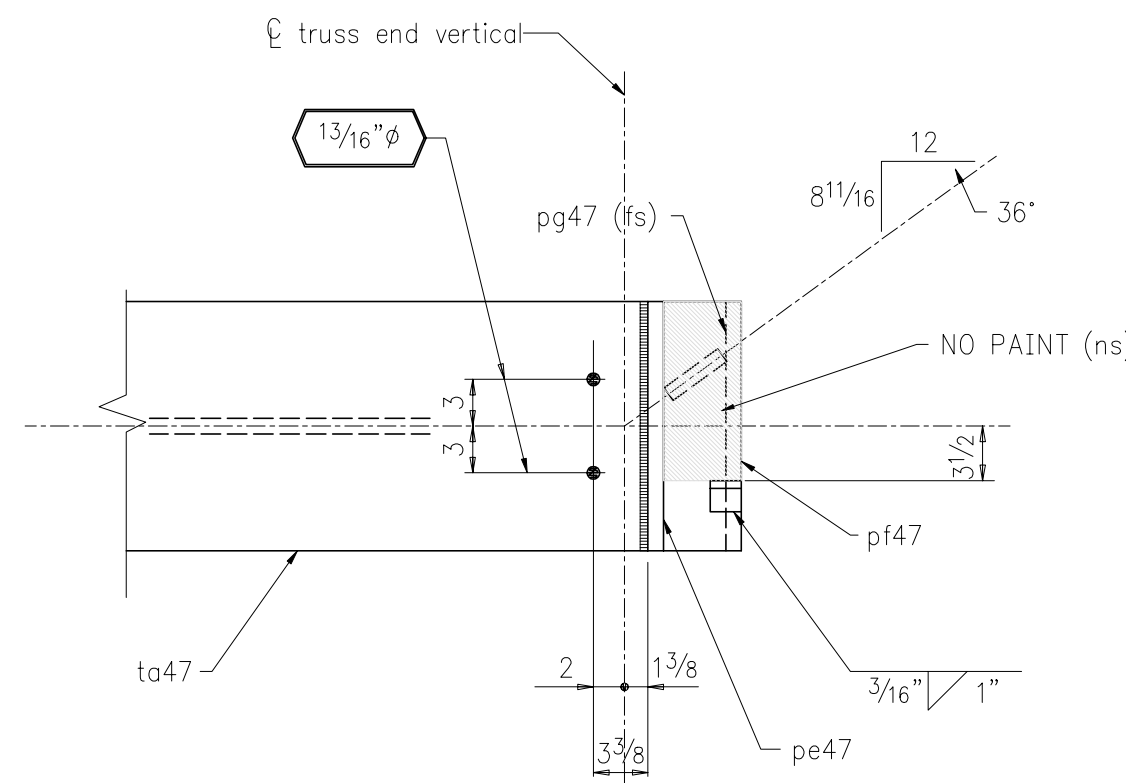
- NOTES:
1. Work this sheet w/ sheets 47, 48, 49 and 51
 2. All field bolts are 1" A325 w/ hard washer under the turned element.
 3. Camber truss 2" @ 6' of span. Truss dimensions have been adjusted for camber.
 4. All shipping pieces are to be match marked for field assembly.
 5. All stitch R's shall be equally spaced along length of member.
 6. Web member welds shown are typical at each end unless shown otherwise.
 8. All holes for field splices are to be match drilled 1/16" Ø.
 - 9.

NO PAINT WITHIN 3" OF ANY H.S. BOLT HOLE @ FAYING SURFACES
Un. Ntd. (P)

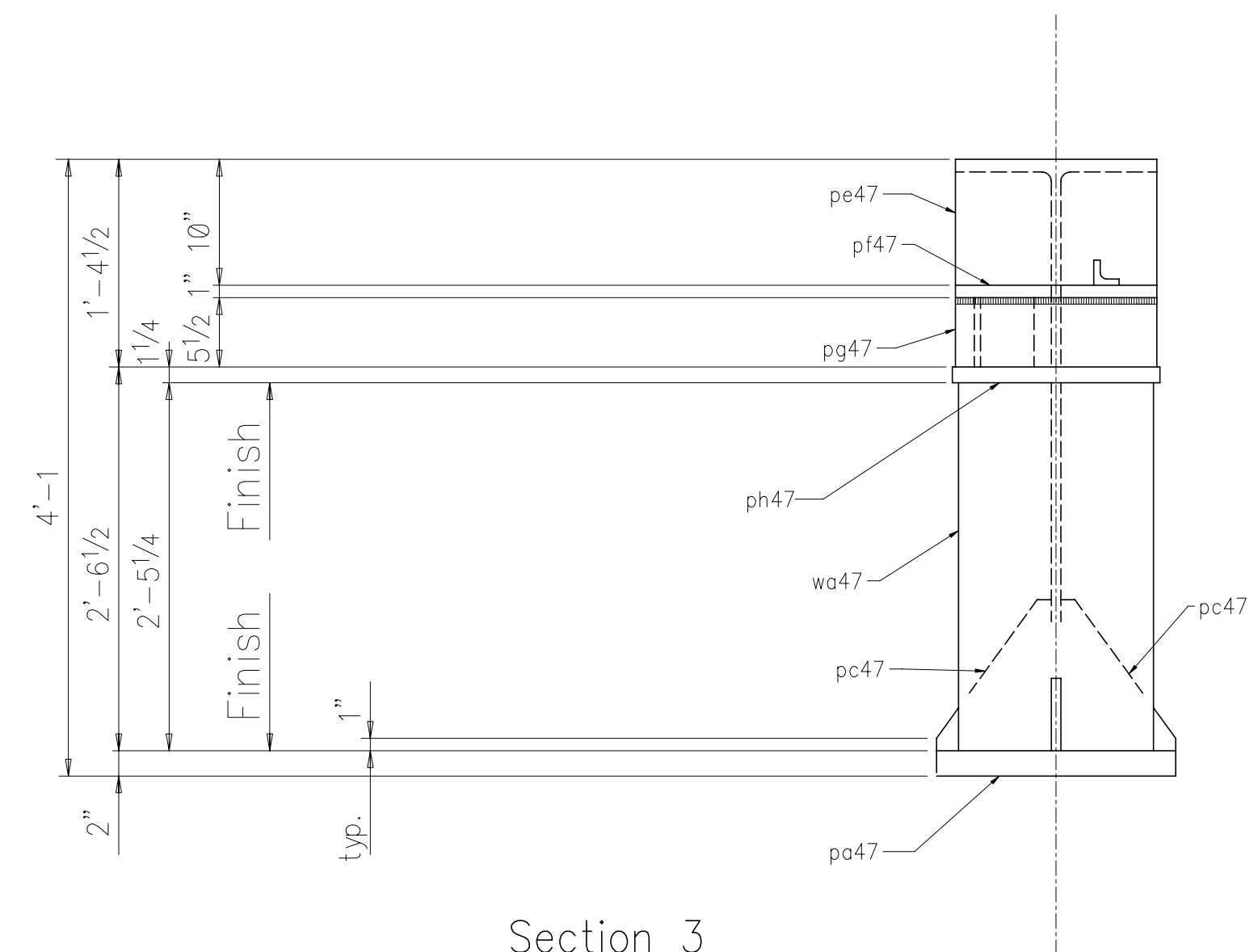
KINGSTON STEEL INCORPORATED KINGSTON SPRINGS, TN.	
JOB	Starwood Amphitheatre
LOCATION	Nashville, Tennessee
ARCHITECT	Gele/Sustaita
CUSTOMER	R.L. Scobey
DRAWN BY	B. Vaughan
CHECKED BY	DG
DATE	
PRINT RECORD	
	PAINT 1 S/C
	Red Oxide
	HOLES 1/16" Ø UNLESS NOTED
	WELD E70xx UNLESS NOTED
	JOB NO. 8601
	SHEET



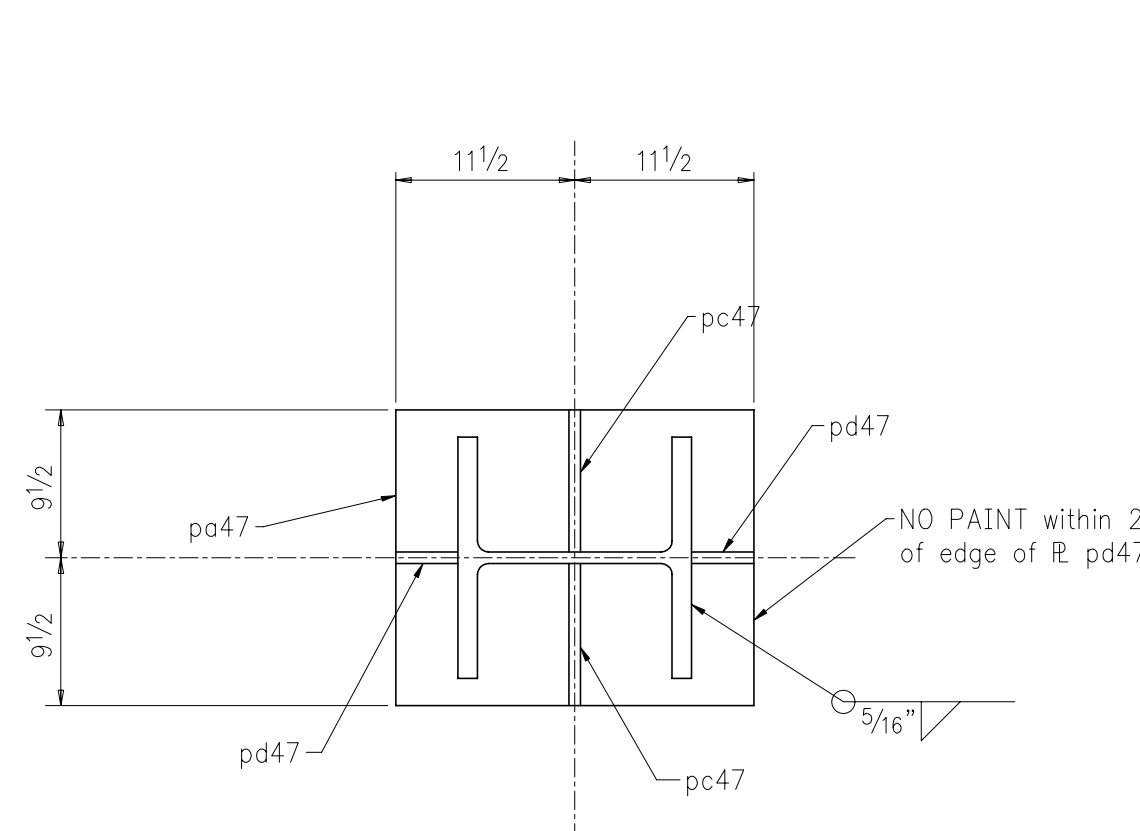
Section 1



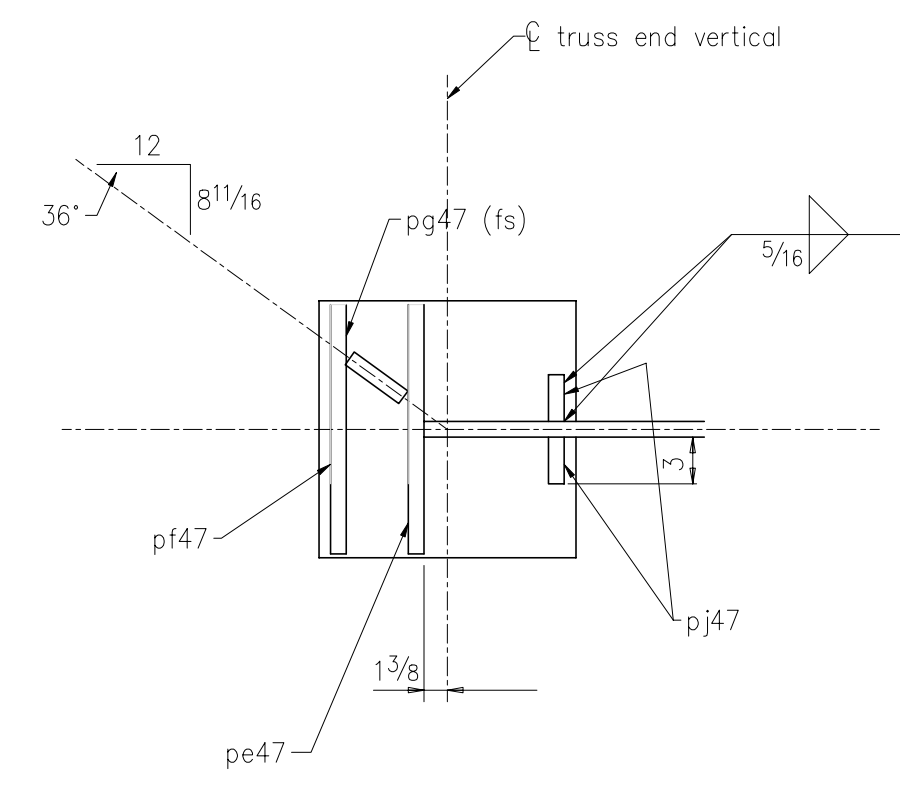
Section 8



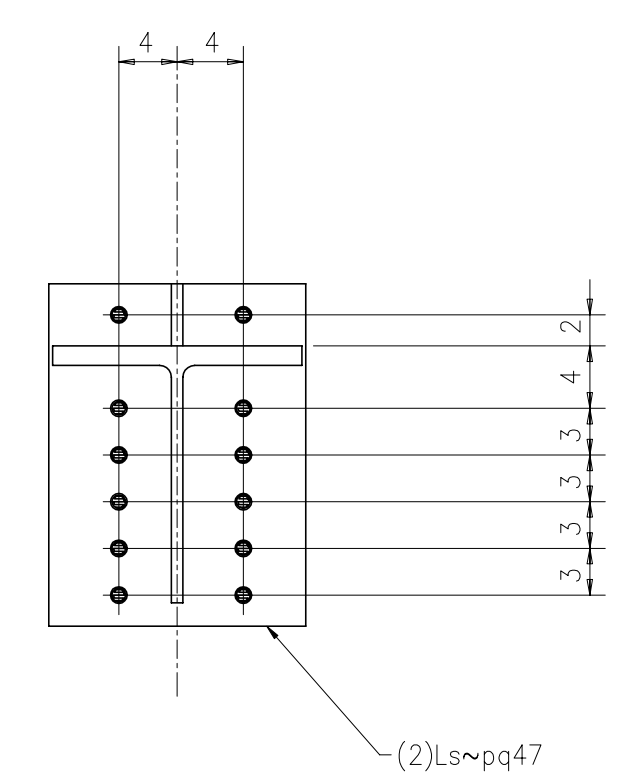
Section 3



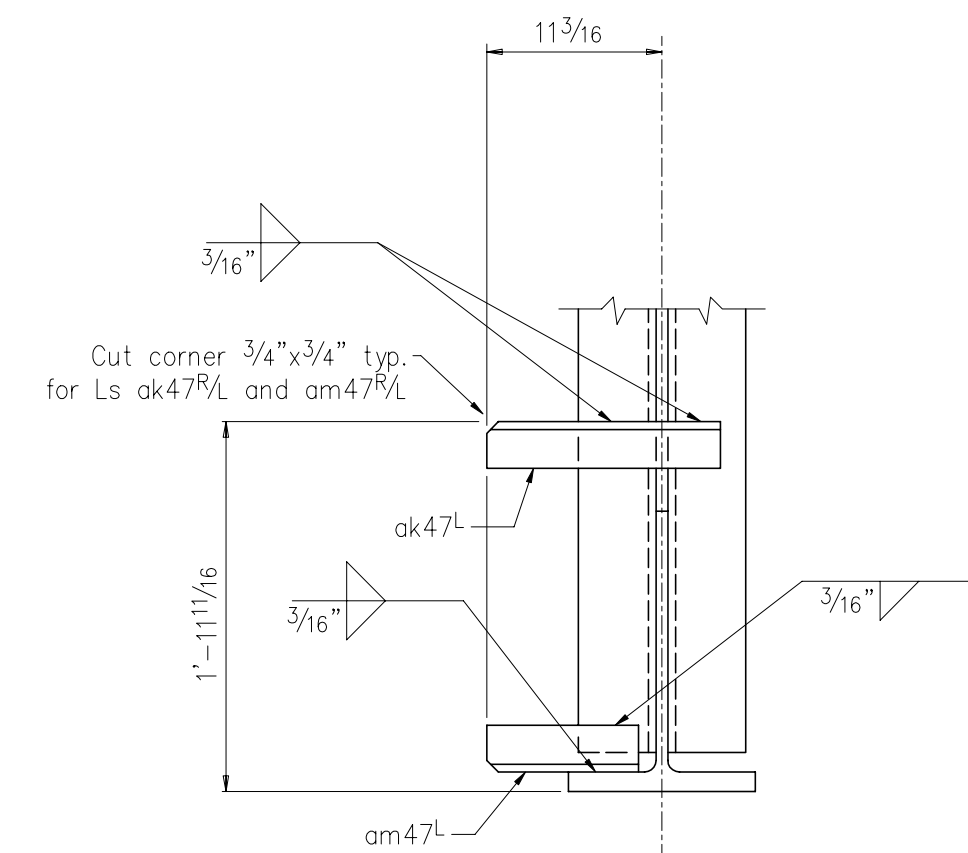
Section 2



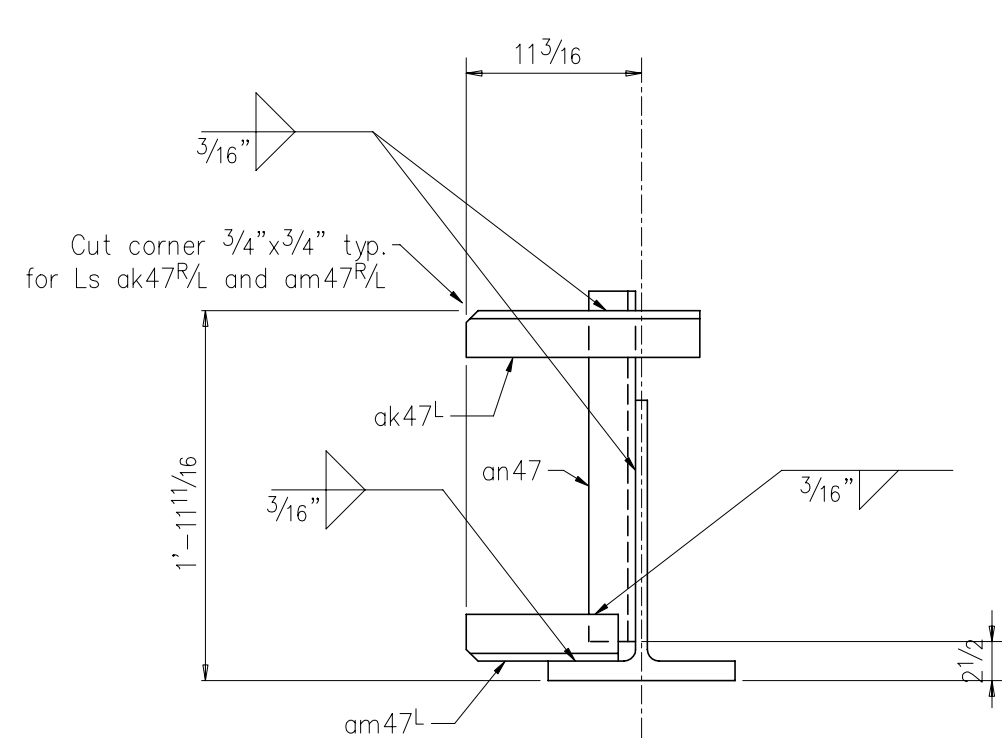
Section 4



Section 5

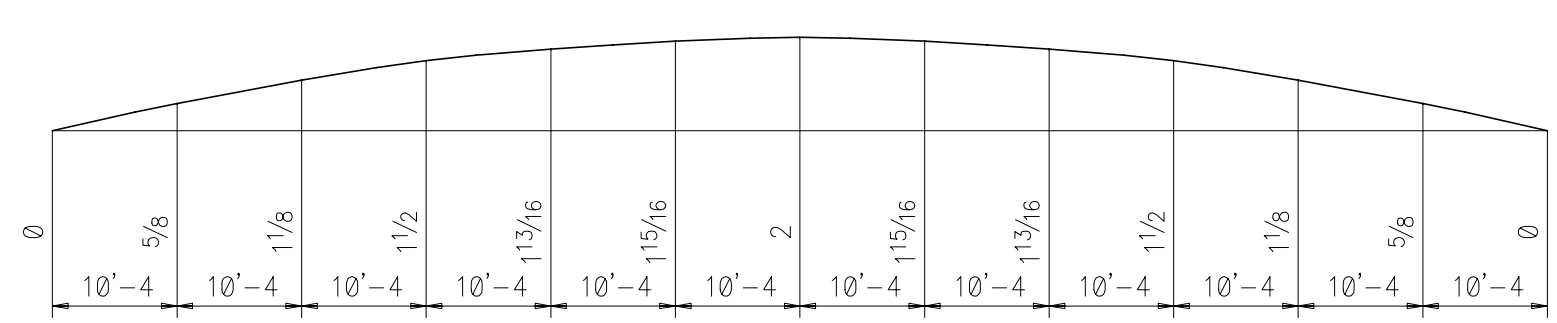


Section 6



Section 7

NO PAINT WITHIN 3" OF ANY H.S. BOLT HOLE @ FAYING SURFACES Un. Ntd. (P)



Camber Diagram

47A	One	Truss			
wa47	2	W14	145	2'-5 1/4	
ta47	2	WT16.5	100.5	36'-2 1/8	F2E
tb47	2	WT18	80	34'-4 1/2	
tc47	1	WT16.5	110.5	51'-5 1/2	F2E
td47	1	WT18	97	51'-7	
oa47	4	L-6x6x5/8		14'-1	
ob47	8	L-6x6x1/2		11'-7	
oc47 7/8 L	2/2	L-6x6x5/8		14'-2	
od47 7/8 L	2/2	L-4x4x5/8		14'-3	
oe47	8	L-5x5x1/2		11'-7	
of47	4	L-4x4x1/2		14'-1	
og47	8	L-4x4x3/8		14'-2	
oh47	6	L-4x4x3/8		11'-7	
ok47 7/8 L	7/6	L-3x3x1/4		1'-3	
am47 7/8 L	7/6	L-3x3x1/4		0'-10	
an47	2	L-3x3x1/4		1'-10	
ap47	2	L-2x2x1/4		0'-2	
pa47	2	R 2"x19		1'-11	
pb47	4	R 1"x7		1'-0	
pc47	4	R 5/8"x9 1/8		1'-0	
pd47	4	R 5/8"x4		0'-6	
pe47	2	R 1"x15 3/4		1'-4 1/2	
pf47	2	R 1"x5		1'-3 3/4	
pg47	2	R 1"x5 1/2		1'-3 3/4	
ph47	2	R 1 1/4"x16 1/2		1'-4 1/2	
pi47	2	R 1"x4 3/16		0'-5 1/2	
pj47	4	R 1"x1 1/2		0'-3	
pk47	2	R 3/4"x12		1'-4	
pl47	2	R 5/8"x11		1'-8	
pm47	2	R 5/8"x8		1'-7	
pn47	2	R 5/8"x4 1/2		0'-6	
pp47	4	R 5/8"x4		0'-9	
pq47	4	R 1 1/4"x16 1/2		1'-10	
pr47	4	R 3/4"x4		0'-11	
spa47	12	Bar 3"x5/8		0'-7	
spb47	8	Bar 3"x5/8		0'-6	
spc47	14	Bar 3"x5/8		0'-5	
spd47	2	R 1/2"x12		2'-10	
spe47	4	Bar 5"x5/8		2'-10	
spf47	4	Bar 5"x1/4		1'-4 1/2	
spg47	4	R 1/2"x12		2'-1	
sph47	4	R 1 1/16"x10		1'-0	

Field bolt recap this sheet:			
56	1"φ A325	0'-3	W/nut
64	1"φ A325	0'-3 3/4	W/nut
120	1" Hard. flat washers		

KINGSTON STEEL INCORPORATED KINGSTON SPRINGS, TN.			
JOB	Starwood Amphitheatre		
LOCATION	Nashville, Tennessee		
ARCHITECT	Gele'/Sustaita		
CUSTOMER	R.L. Scobey		
DRAWN BY	B. Vaughan	PAINT 1 S/C	
CHECKED BY	DG	Red Oxide	
DATE		HOLES 1 1/16"φ	UNLESS NOTED
PRINT RECORD		WELD E70xx	UNLESS NOTED
		JOB NO.	8601
		SHEET	