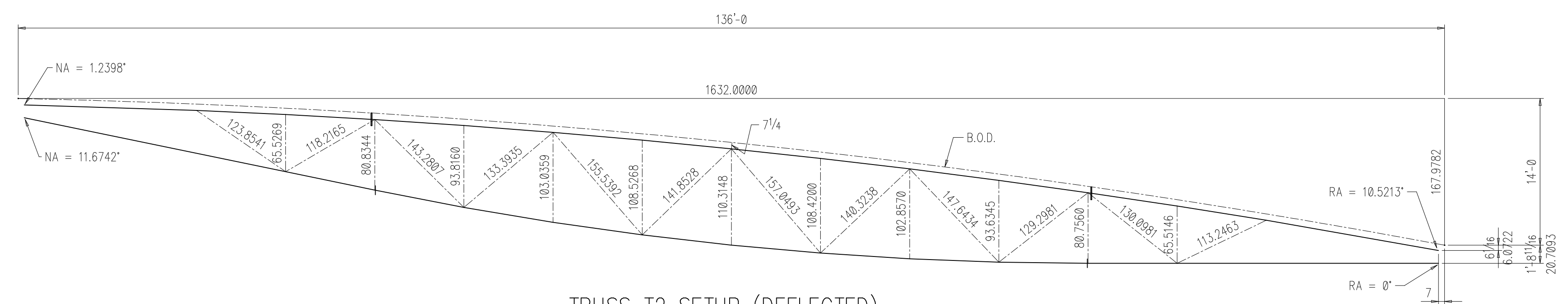
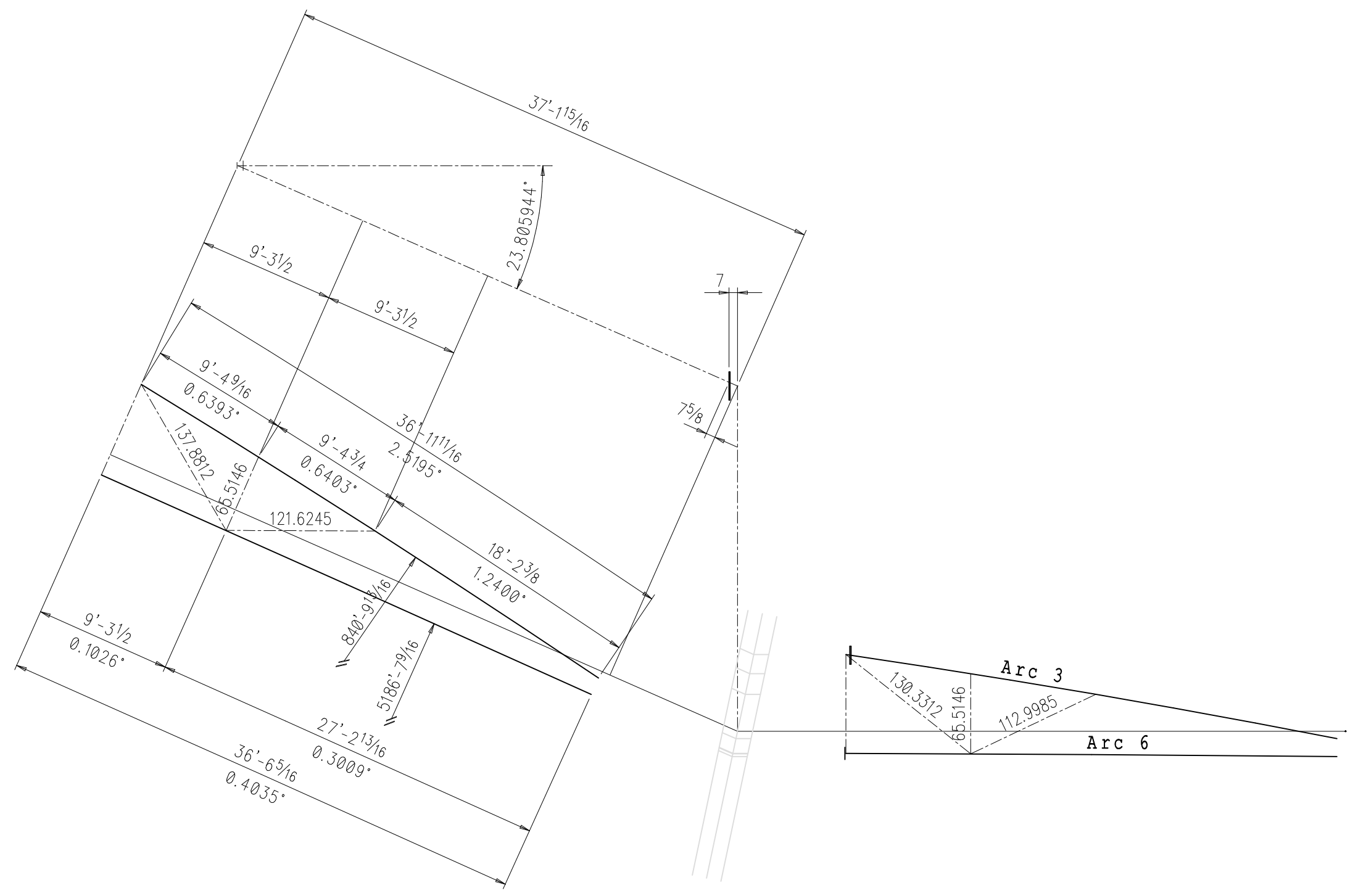


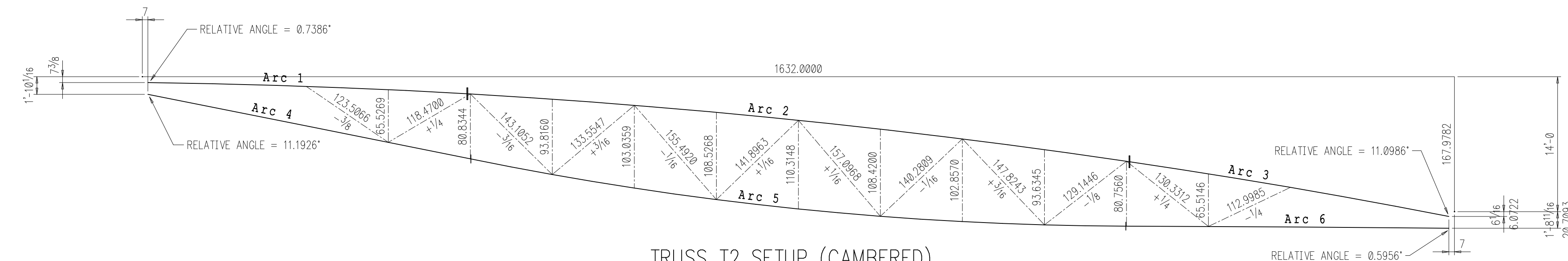
T2 LEFT END (DEVELOPED, CAMBERED)



TRUSS T2 SETUP (DEFLECTED)



T2 RIGHT END (DEVELOPED, CAMBERED)



TRUSS T2 SETUP (CAMBERED)

Arc 1: Radius = 753'-11 3/8"	Angle = 2.5413	Length = 33'-5 1/4"
Arc 2: Radius = 779'-9 9/16"	Angle = 5.0242	Length = 68'-4 9/16"
Arc 3: Radius = 708'-6 3/4"	Angle = 2.7418	Length = 33'-10 7/8"
Arc 4: Radius = 8038'-5 3/8"	Angle = 0.2429	Length = 34'-0 15/16"
Arc 5: Radius = 344'-6 3/16"	Angle = 11.3871	Length = 68'-5 5/8"
Arc 6: Radius = 4341'-7 5/8"	Angle = 0.4410	Length = 33'-5"