

- TRUSS NOTES:
1. ALL MATERIALS ARE CENTERED ON TRUSS UNLESS SHOWN OTHERWISE.
 2. NO CAMBER IS REQUIRED.
 3. SEE PART DRAWINGS FOR DETAIL DIMENSIONS NOT SHOWN.
 4. WELDS SHOWN AT TRUSS WEB MEMBERS ARE TYPICAL AT BOTH ENDS.
 5. CENTER STITCH PLATES BETWEEN POINTS OF ATTACHMENT.
 6. OMIT PAINT WITHIN 2" OF PREPARATIONS FOR FIELD WELDING.

ONE TRUSS 301T1

W	12 ³ / ₁₆ x 1/4
F	6 ¹ / ₂ x 7 ¹ / ₁₆

SHOP NOTE: WORK THIS SHEET WITH SHEET 301B/C AND 301C/C.

- SHOP NOTES:
1. ALL REENTRANT CUTS TO HAVE 1/2" RADIUS TYP.
 2. SEE BILL OF MATERIAL FOR MATERIAL GRADE.
 3. WELD E70 SERIES LOW HYDROGEN ELECTRODES.
 4. SYMBOL INDICATING FRAMING SIDE (SPOT w/PAINT): ☒
 5. EXTENSION DIMENSION ORIGIN POINT INDICATED THIS: ●
 6. HOLES ARE 13/16" DIAMETER UNLESS NOTED OTHERWISE.

PAINT: 1 S/C STD. IRON OXIDE PRIMER 1.5 MIL MIN. UN

Rev.	Date	Description	By

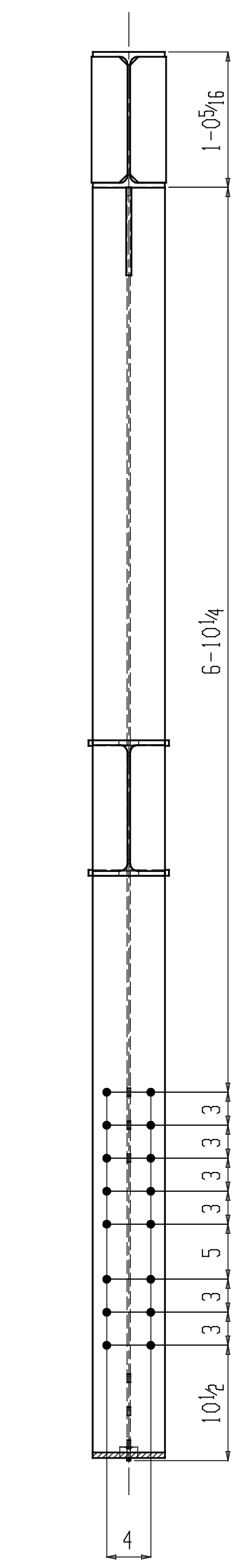
IRWIN STEEL

15740 Highway 114 ~ Justin, Texas 76247
Phone (817) 636-2508 ~ Fax (817) 636-2506

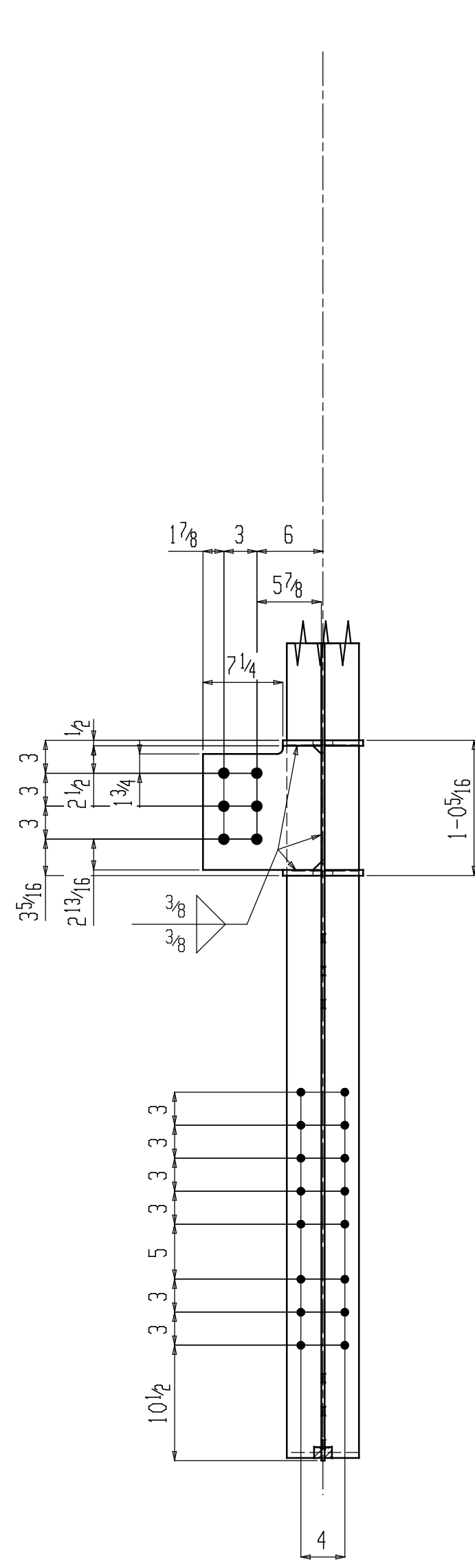
PRINT RECORD					
Date	Quan.	For	Date	Quan.	For
11-15-2004	6	APPROVAL			
12-09-2004		FABRICATION/FIELD USE			

Job Name: DALLAS EXECUTIVE AIRPORT
Location: DALLAS, TEXAS
Customer: MERIDIAN COMMERCIAL, L.P.
Architect: GRW WILLIS, INC.

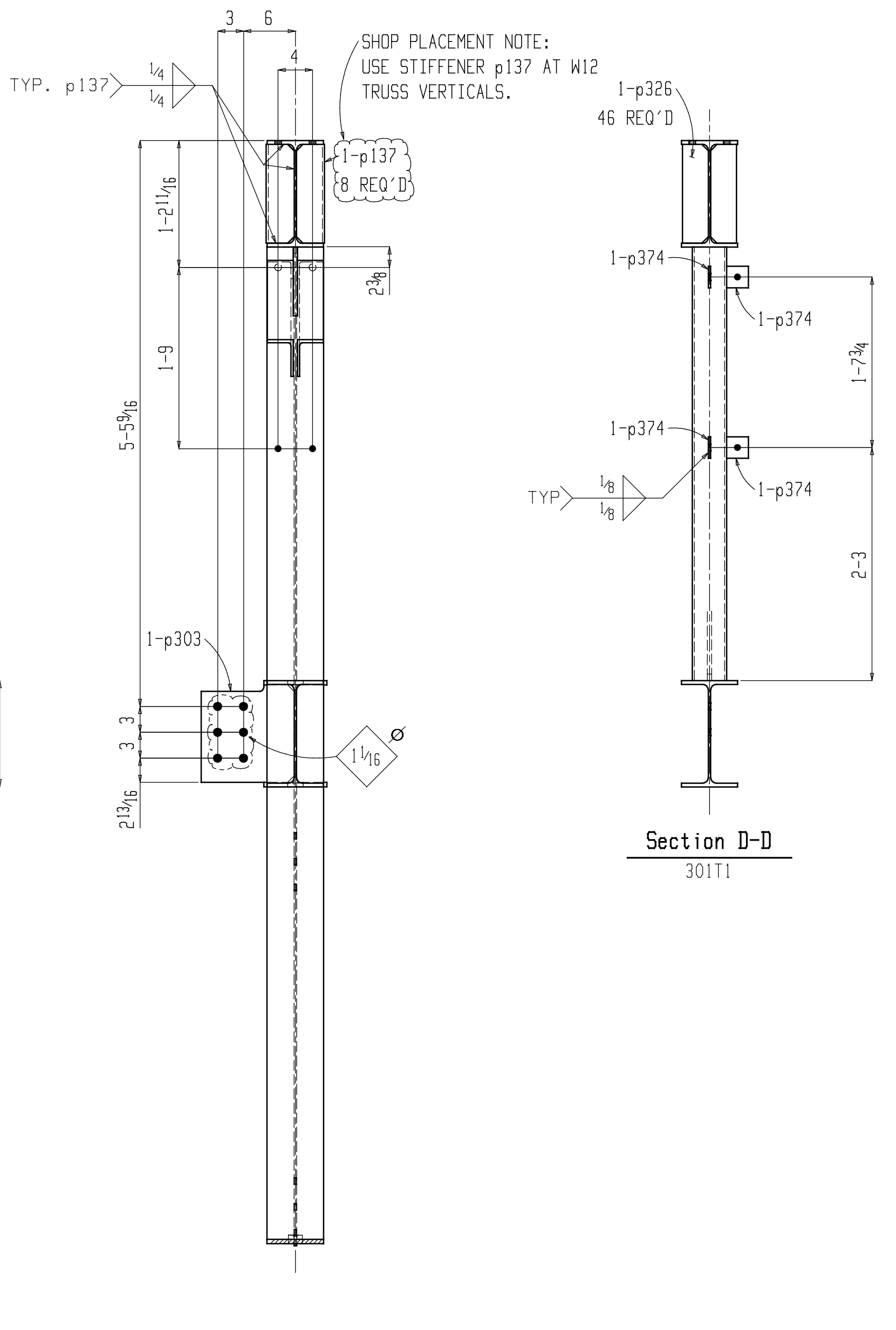
DRAWN: BV DETAILING	JOB NO: 0437	SHEET NO.
CHECKED: DG	CAD NO:	301A/C



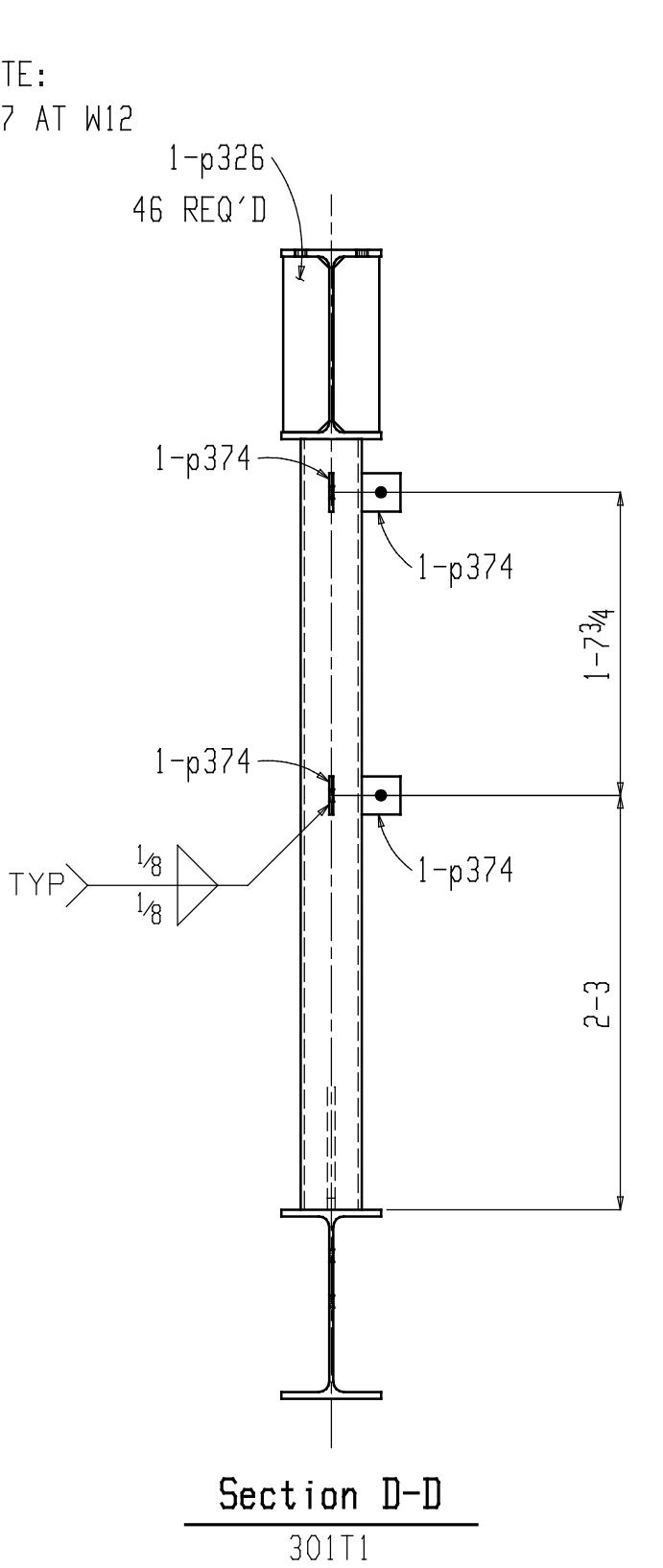
Section A-A
301T1



Section B-B
301T1



Section C-C
301T1



Section D-D
301T1

SHOP PLACEMENT NOTE:
USE STIFFENER p137 AT W12
TRUSS VERTICALS.

SHOP NOTE: WORK THIS SHEET WITH SHEETS 301A/C AND 301B/C.

- TRUSS NOTES:
1. ALL MATERIALS ARE CENTERED ON TRUSS UNLESS SHOWN OTHERWISE.
 2. NO CAMBER IS REQUIRED.
 3. SEE PART DRAWINGS FOR DETAIL DIMENSIONS NOT SHOWN.
 4. WELDS SHOWN AT TRUSS WEB MEMBERS ARE TYPICAL AT BOTH ENDS.
 5. CENTER STITCH PLATES BETWEEN POINTS OF ATTACHMENT.
 6. OMIT PAINT WITHIN 2" OF PREPARATIONS FOR FIELD WELDING.

LINE	MINOR MARK	QUAN UNIT	QUAN TOTAL	MATERIAL DESCRIPTION	MAT'L GRADE	LENGTH		PIECE MARK	REMARKS	WEIGHT	ORDER
						FT	IN			TOTAL	ITEM
1			ONE	TRUSS				301T1		4214	
2	301T1	1	1	W12x30	A992	42	11 1/16			1288	13-45
3	w15	1	1	W12x35	A992	9	7 3/4		S2E 16-1	338	
4	w81	1	1	W12x30	A992	22	8 3/4		S2E 14-1	682	
5	w98	1	1	W12x30	A992	10	2 7/16		S1E 14-2	306	
6	w109	1	1	W12x35	A992	9	7 3/4		S2E 16-1	338	
7	w119	1	1	W12x26	A992	1	8 1/4		S/W	44	
8	hss187	5	5	HSS4x4x1/4	A500B	4	2 1/4		S2E 17-12	256	
9	a114	4	4	L3x3x1/4	A36	5	4 1/2			105	
10	a160	1	1	L5x3 1/2x3/8	A36	4	2 1/8			43	
11	a169	8	8	L3x3x1/4	A36	5	10			229	
12	a173	1	1	L5x3 1/2x3/8	A36	4	2 1/8			43	
13	p120	1	1	PL 1/2x11 1/2	A36	1	7			31	
14	p125	1	1	FL 1/2x6	A36	0	2			2	
15	p137	8	8	PL 1/2x3 1/4	A36	0	11 7/16			42	
16	p150	3	3	PL 1/2x8	A36	0	8			27	
17	p300	1	1	PL 1/2x13	A36	1	4			29	
18	p303	1	1	PL 5/8x10 3/4	A36	0	11 5/16			22	
19	p304	6	6	PL 3/8x3 1/4	A36	0	11 7/16			24	
20	p312	8	8	PL 1/2x3 1/2	A36	0	11 3/8			45	
21	p314	6	6	FL 1/2x4	A36	0	2			7	
22	p315	9	9	PL 1/2x8	A36	1	2			143	
23	p326	46	46	FL 3/8x3	A36	0	11 7/16			168	
24	p374	6	6	PL 1/4x2 1/2	A36	0	2 1/2			3	
25											
26				FIELD BOLTS							
27		12	12	3/4 Dia A325N		0	2 3/4		2HD WASH		
28		46	46	3/4 Dia A325N		0	2 1/4		2HD WASH		
29		12	12	3/4 Dia A325N		0	2		2HD WASH		
30		20	20	3/4 Dia A325N		0	2		1HD WASH		
31											
32											
33											
34											
35											
36											
37											
38											
39											
40											
41											
42											
43											
44											
45											
46											
47											
48											
49											
50											
51											
52											
53											

- SHOP NOTES:
1. ALL REENTRANT CUTS TO HAVE 1/2" RADIUS TYP.
 2. SEE BILL OF MATERIAL FOR MATERIAL GRADE.
 3. WELD E70 SERIES LOW HYDROGEN ELECTRODES.
 4. SYMBOL INDICATING FRAMING SIDE (SPOT w/PAINT): ☒
 5. EXTENSION DIMENSION ORIGIN POINT INDICATED THUS: ●
 6. HOLES ARE 1/16" DIAMETER UNLESS NOTED OTHERWISE.

PAINT: 1 S/C STD. IRON OXIDE PRIMER 1.5 MIL MIN.

Rev.	Date	Description	By

IRWIN STEEL

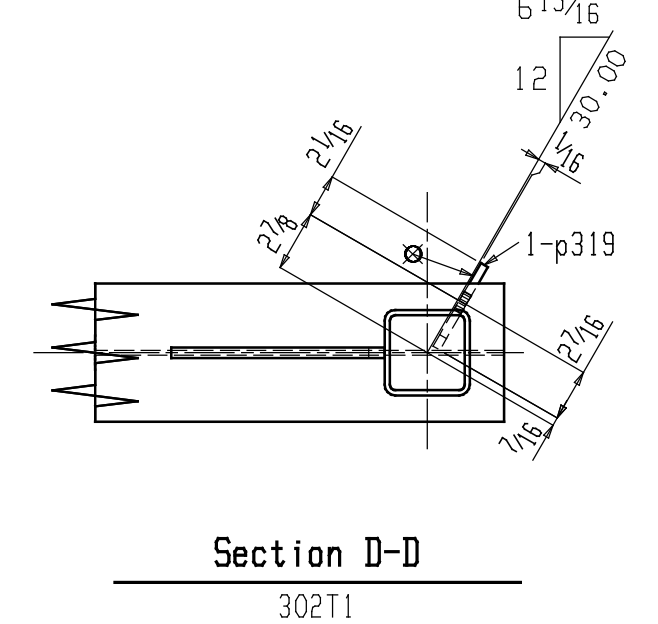
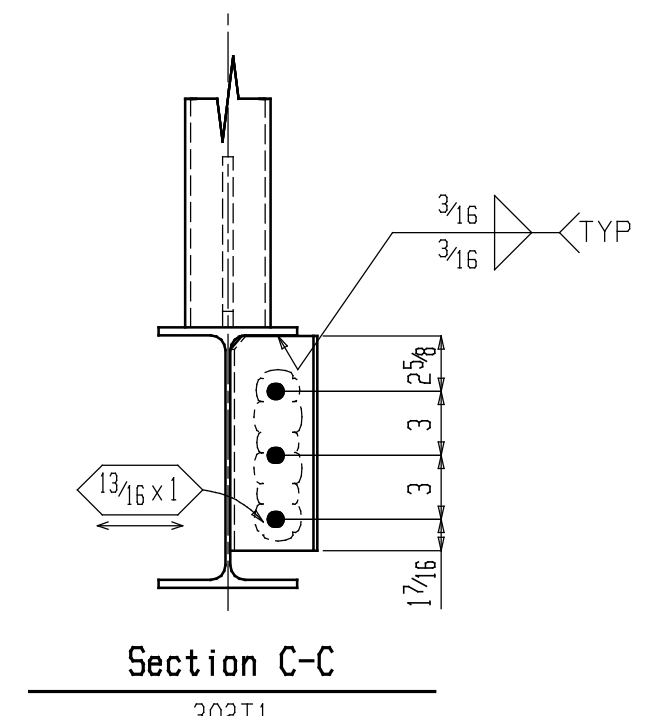
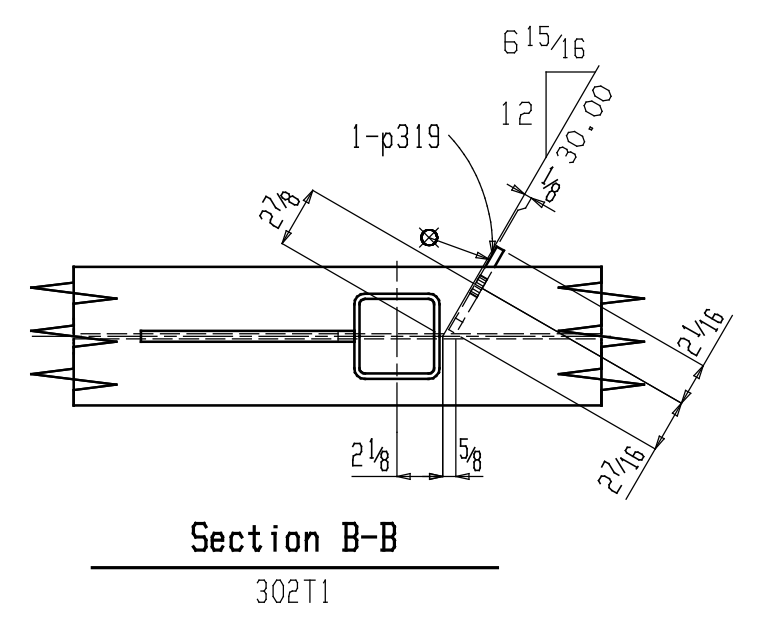
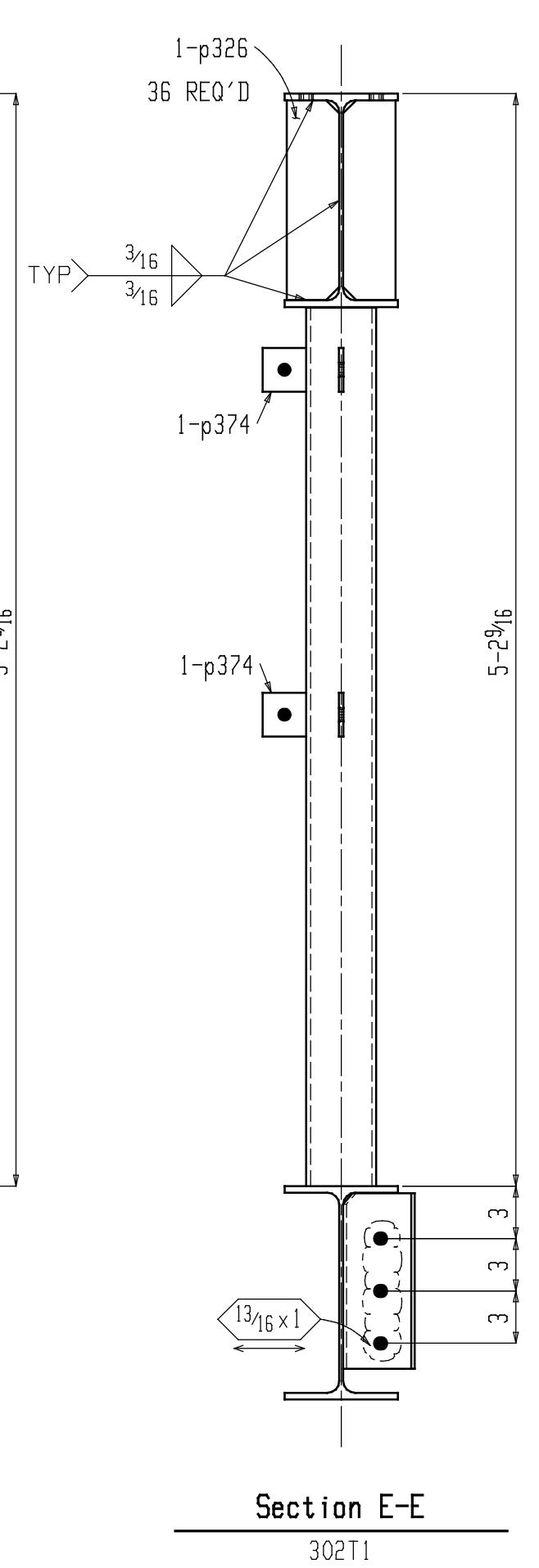
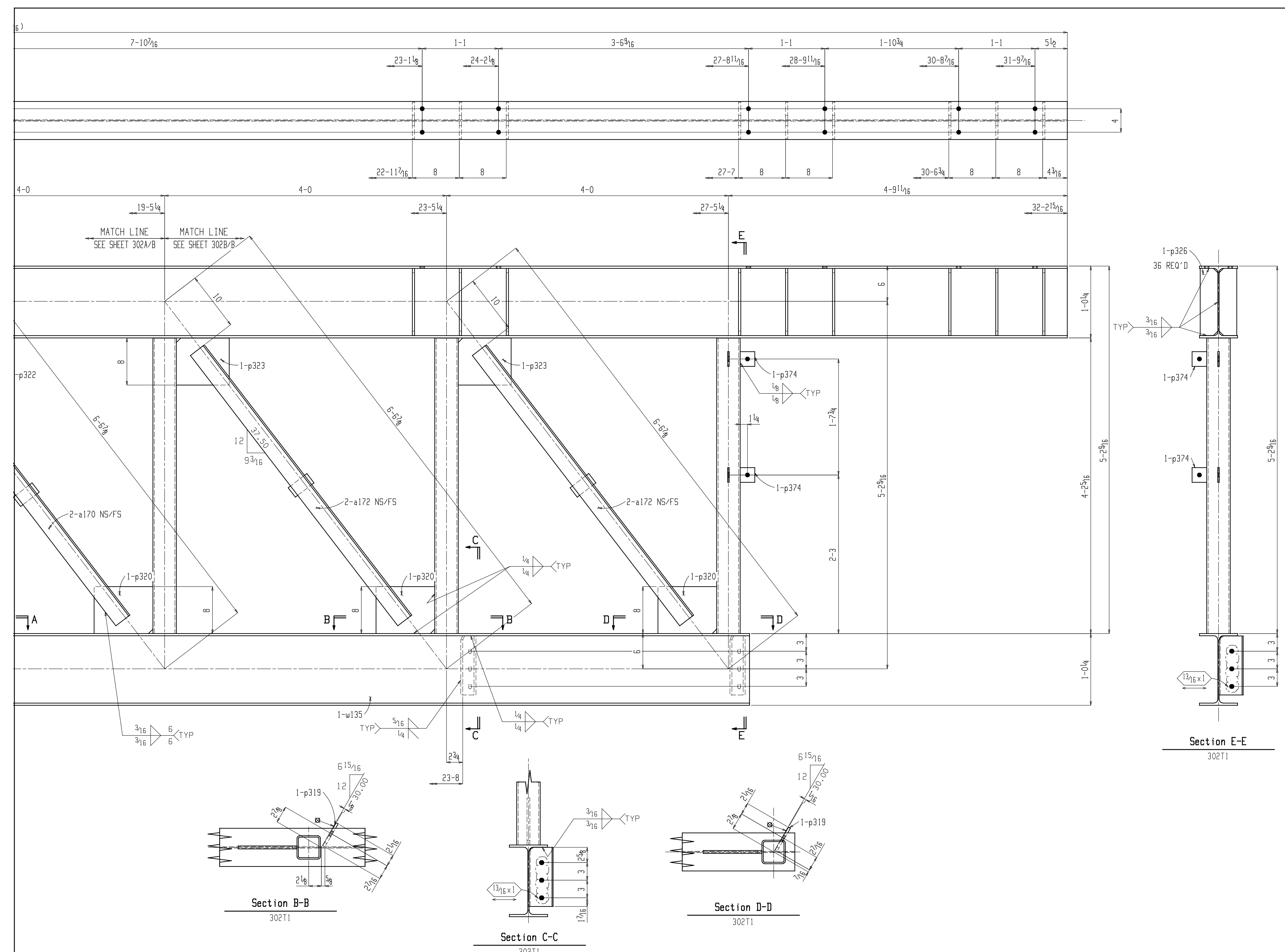
15740 Highway 114 ~ Justin, Texas 76247
Phone (817) 636-2508 ~ Fax (817) 636-2506

Job Name: DALLAS EXECUTIVE AIRPORT
Location: DALLAS, TEXAS
Customer: MERIDIAN COMMERCIAL, L.P.
Architect: GRW WILLIS, INC.



PRINT RECORD

Date	Quan.	For	Date	Quan.	For
11-15-2004	6	APPROVAL			
12-09-2004		FABRICATION/FIELD USE			

DRAWN: BV DETAILING	JOB NO: 0437	SHEET NO. 301C/C
CHECKED: DG	CAD NO:	



LINE	MINOR MARK	QUAN UNIT	QUAN TOTAL	MATERIAL DESCRIPTION	MAT'L GRADE	LENGTH		PIECE MARK	REMARKS	WEIGHT		ORDER ITEM
						FT	IN			TOTAL	ITEM	
1			ONE	TRUSS				302T1			3082	
2	302T1	1	1	W12x26	A992	32	2 15/16				838	14-4
3	w104	1	1	W12x35	A992	9	0 5/16		S2E 16-1		316	
4	w117	1	1	W12x26	A992	13	9 1/4		S2E 14-5		358	
5	w123	1	1	W12x35	A992	9	0 5/16		S2E 16-1		316	
6	w135	1	1	W12x26	A992	11	9 3/8		S1E 14-6		306	
7	hss185	5	5	HSS4x4x1/4	A500B	4	2 5/16		S2E 17-12		256	
8	a119	2	2	L3x3x1/4	A36	5	2				51	
9	a170	2	2	L3x3x1/4	A36	4	6				44	
10	a171	4	4	L3x3x1/4	A36	5	3 1/2				104	
11	a172	4	4	L3x3x1/4	A36	4	10				95	
12	p128	4	4	FL1/2x4	A36	0	11 5/16				26	
13	p131	4	4	PL3/8x3 1/4	A36	0	11 3/8				16	
14	p137	8	8	PL1/2x3 1/4	A36	0	11 7/16				42	
15	p150	2	2	PL1/2x8	A36	0	8				18	
16	p310	1	1	PL5/8x11 1/4	A36	1	1				26	
17	p314	6	6	FL1/2x4	A36	0	2				7	
18	p319	2	2	FL3/8x4 1/2	A36	0	10 1/16				10	
19	p320	3	3	PL1/2x8	A36	0	10				34	
20	p321	4	4	PL1/2x8	A36	1	0				54	
21	p322	1	1	PL1/2x8	A36	0	11				12	
22	p323	2	2	PL1/2x8	A36	0	9				20	
23	p326	36	36	FL3/8x3	A36	0	11 7/16				131	
24	p374	4	4	PL1/4x2 1/2	A36	0	2 1/2				2	
25												
26				FIELD BOLTS								
27			32	3/4 Dia A325N		0	2 1/4		2HD WASH			
28			21	3/4 Dia A325N		0	2		1HD WASH			
29			4	3/4 Dia A325N		0	2		1HD WASH			
30												
31												
32												
33												
34												
35												
36												
37												
38												
39												
40												
41												
42												
43												
44												
45												
46												
47												
48												
49												
50												
51												
52												
53												

SHOP NOTES:
 1. ALL REENTRANT CUTS TO HAVE 1/2" RADIUS TYP.
 2. SEE BILL OF MATERIAL FOR MATERIAL GRADE.
 3. WELD E70 SERIES LOW HYDROGEN ELECTRODES.
 4. SYMBOL INDICATING FRAMING SIDE (SPOT w/PAIN): 
 5. EXTENSION DIMENSION ORIGIN POINT INDICATED THUS: 
 6. HOLES ARE 1 3/16" DIAMETER UNLESS NOTED OTHERWISE.

PAINT: 1 S/C STD. IRON OXIDE PRIMER 1.5 MIL MIN.

Rev.	Date	Description	By

IRWIN STEEL

15740 Highway 114 ~ Justin, Texas 76247
 Phone (817) 636-2508 ~ Fax (817) 636-2506

Job Name: DALLAS EXECUTIVE AIRPORT
 Location: DALLAS, TEXAS
 Customer: MERIDIAN COMMERCIAL, L.P.
 Architect: GRW WILLIS, INC.

PRINT RECORD					
Date	Quan.	For	Date	Quan.	For
11-15-2004	6	APPROVAL			
12-09-2004		FABRICATION/FIELD USE			

DRAWN: BV DETAILING	JOB NO: 0437	SHEET NO. 302B/B
CHECKED: DG	CAD NO:	

SHOP NOTE: WORK THIS SHEET WITH SHEET 302A/B.

TRUSS NOTES:
 1. ALL MATERIALS ARE CENTERED ON TRUSS UNLESS SHOWN OTHERWISE.
 2. NO CAMBER IS REQUIRED.
 3. SEE PART DRAWINGS FOR DETAIL DIMENSIONS NOT SHOWN.
 4. WELDS SHOWN AT TRUSS WEB MEMBERS ARE TYPICAL AT BOTH ENDS.
 5. CENTER STITCH PLATES BETWEEN POINTS OF ATTACHMENT.
 6. OMIT PAINT WITHIN 2" OF PREPARATIONS FOR FIELD WELDING.