

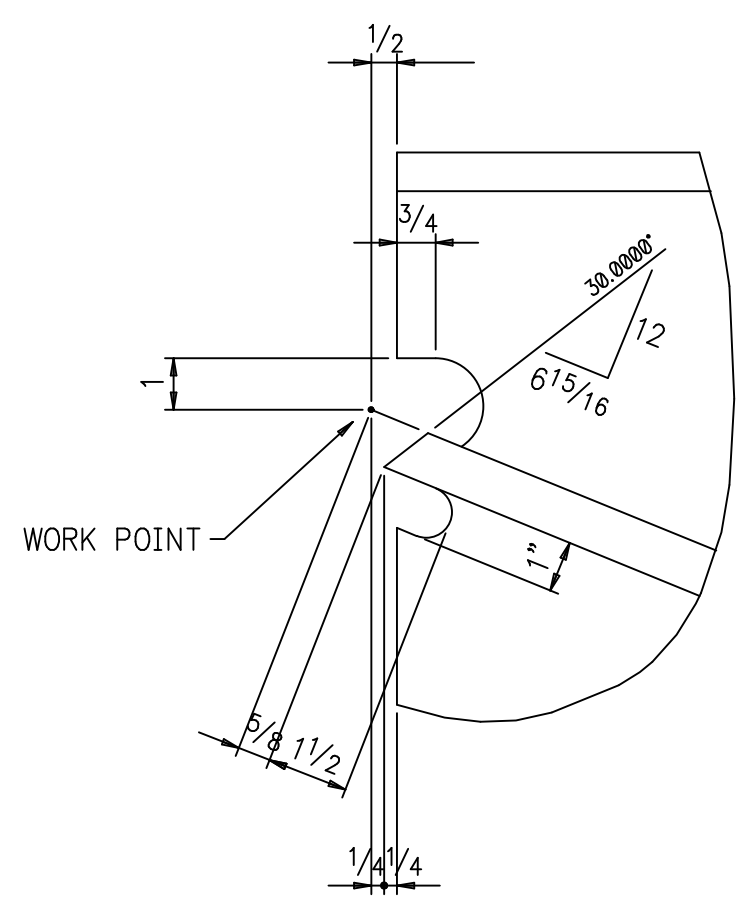
One ~ Girder ~ 269A-33
(AS SHOWN)
(6) 7/8"φx2 3/4" (12) 7/8"φx5" **

One ~ Girder ~ 269B-37
(OPPOSITE HAND)
(6) 7/8"φx2 3/4" (12) 7/8"φx5" **

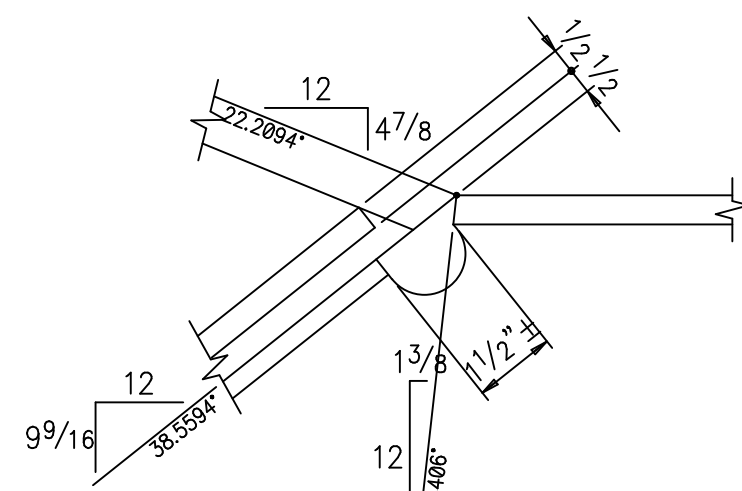
SHOP NOTES:
1. NO PAINT WITHIN 3" OF ANY OPEN HOLE UNLESS NOTED (P).
2. WORK THIS SHEET W/ SHEET 270.

*A325 field bolts w/ hard. flat washer
**A325 field bolts w/ 2 hard. flat washer

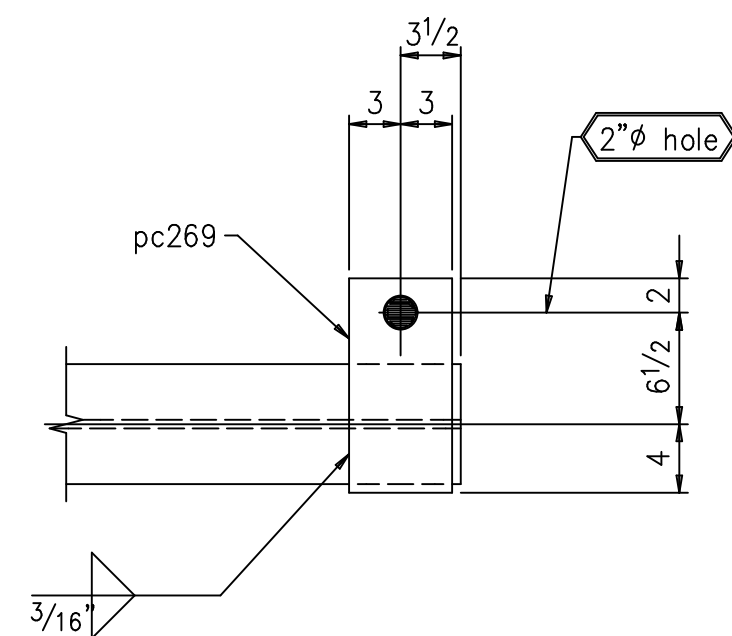
Buffalo Sports Complex
Buffalo, New York
Hellmuth, Obata & Kassabaum, Inc.
Cowper Const. Management, Inc.
B. Vaughtan
SSPC-SP6
90-93 TME-ZINC
1 5/16"φ
E70xx



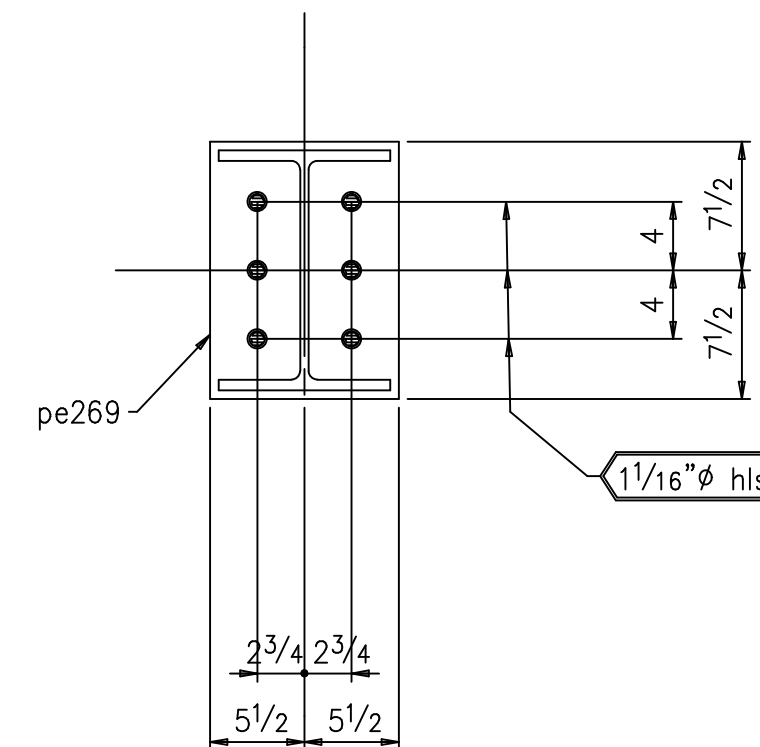
Detail B



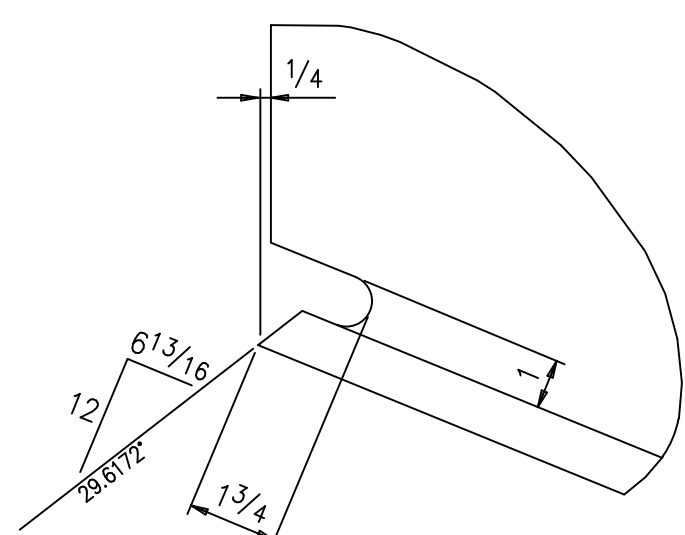
Detail E



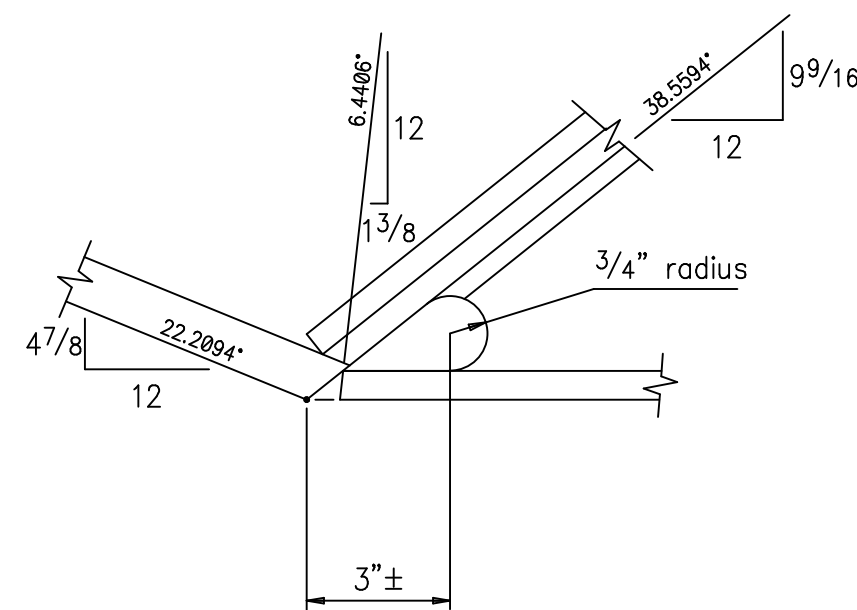
Section 1



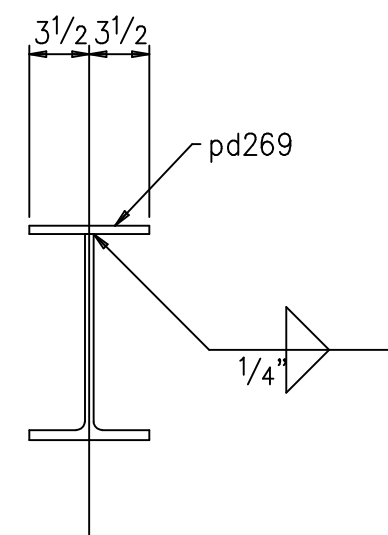
Section 6



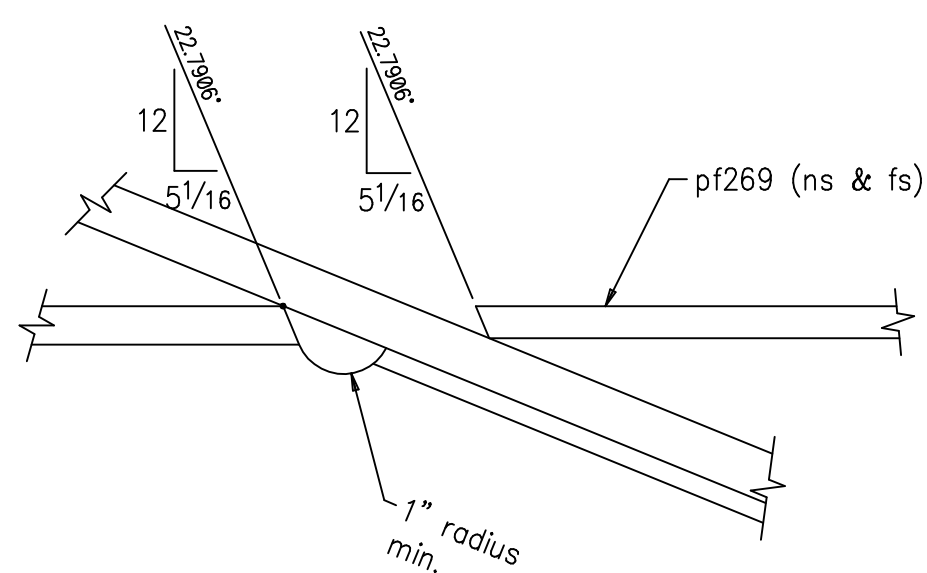
Detail A



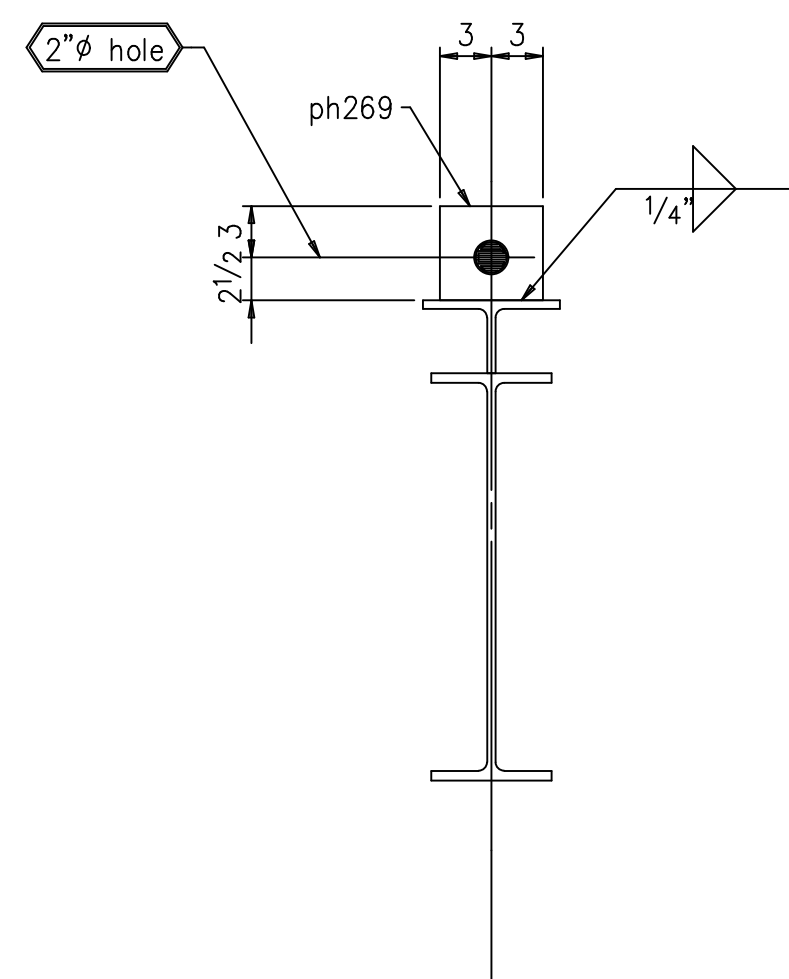
Detail F



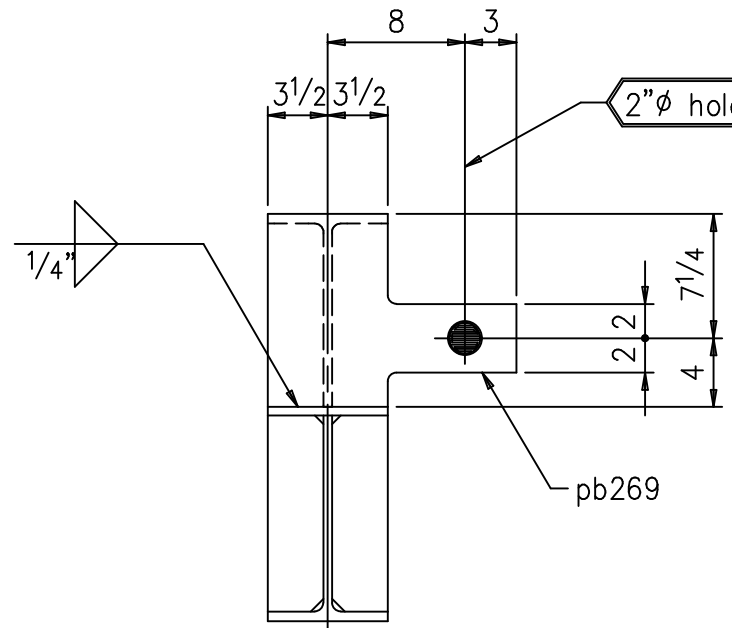
Section 2



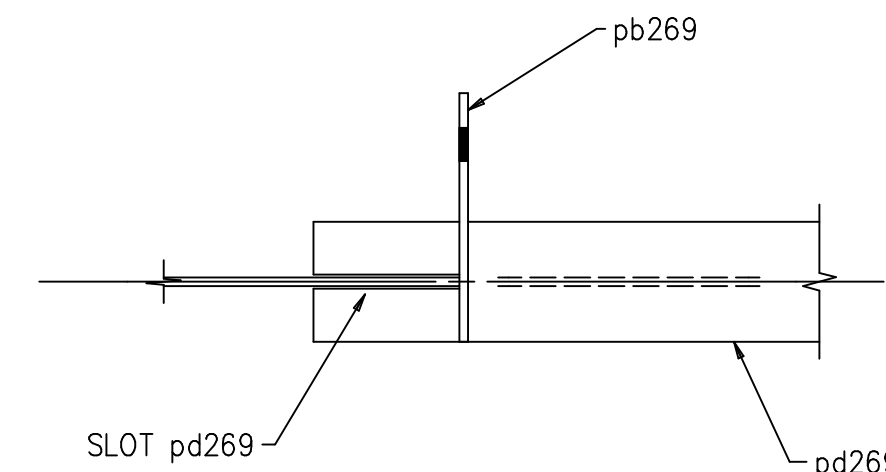
Detail C



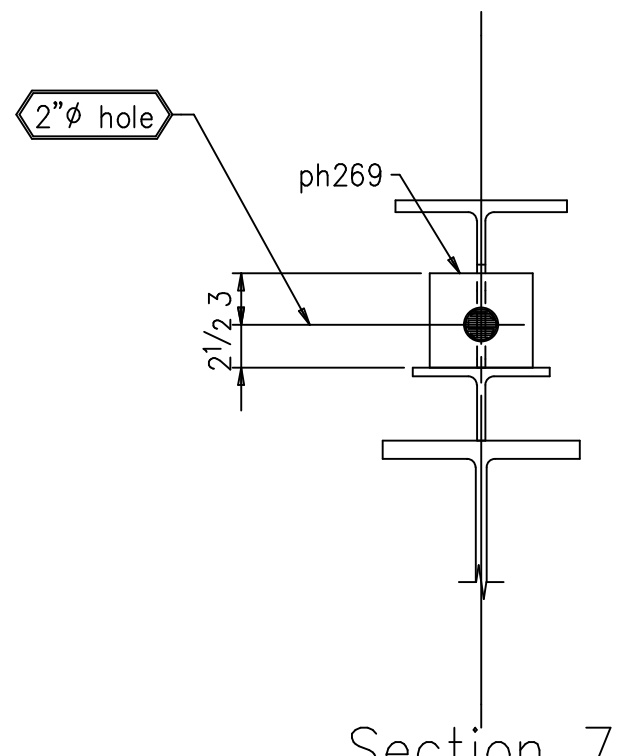
Section 4



Section 3



Section 5



Section 7

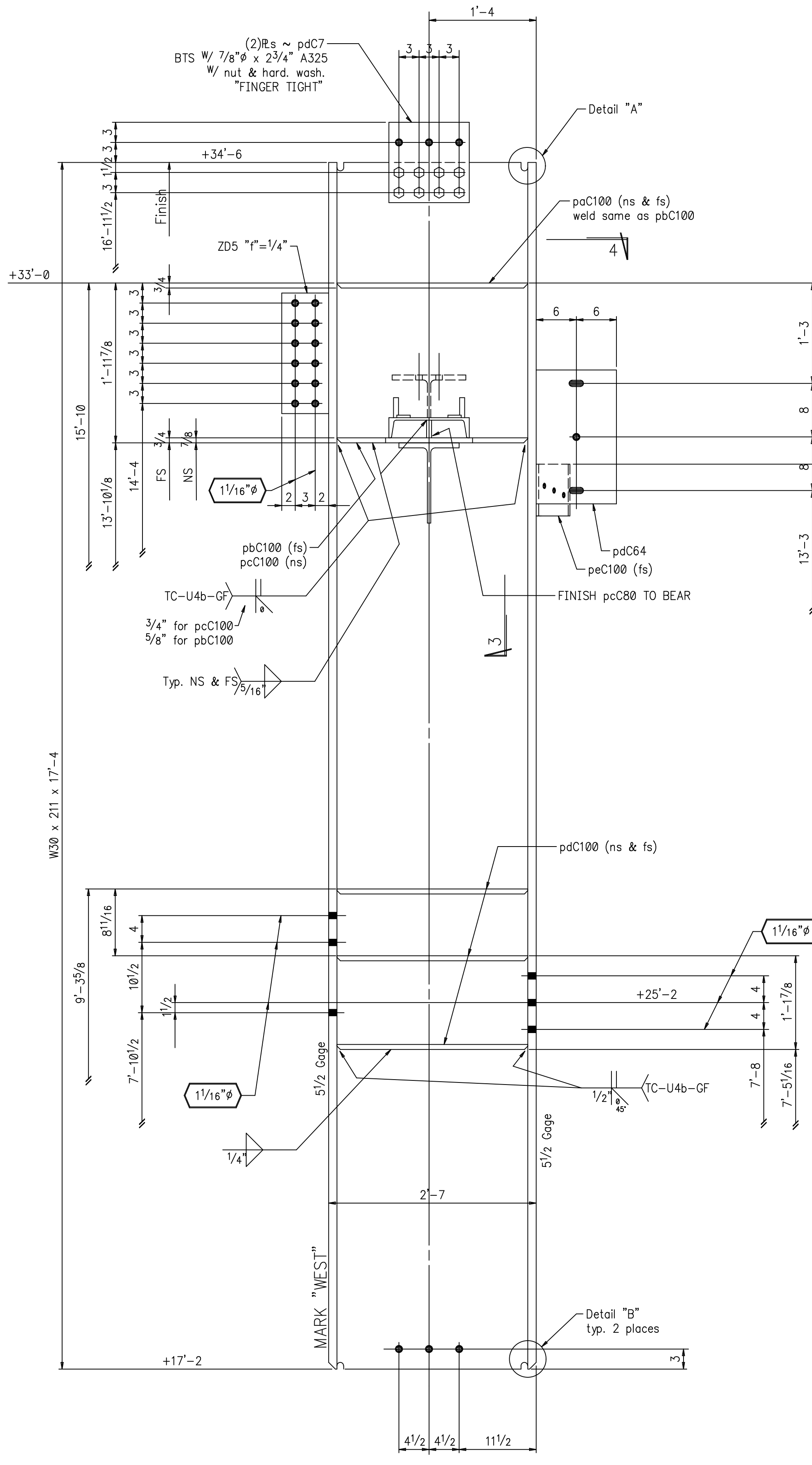
269A-33	One	W33	141	25'-1 5/8	12-1
269B-37	One	W33	141	25'-1 5/8	12-1
wa269	2	W24	62	9'-1 5/16	12-6
wb269	2	W14	61	12'-0 3/4	F1E, 12-12
pa269	4	R 1/2"x 3 1/4		0'-11 7/16	
pb269	2	R 1/2"x 1 1/4		1'-2 1/2	
pc269	2	R 3/8"x 6		1'-0 1/2	
pd269	2	R 1/2"x 7		5'-0	
pe269	2	R 2"x 11		1'-3	
pf269	8	R 3/8"x 5		6'-9 3/4	
pg269	4	R 1/2"x 3 3/16		2'-11 1/16	
ph269	16	R 3/8"x 5 1/2		0'-6	
pi269	6	R 1/2"x 12		0'-8	
ma269	2	Pc. WT13.5	42	2'-6 1/2	
mb269	2	Pc. W12	40	2'-3	
mc269	2	W12	40	1'-2 7/8	BC
md269	2	W12	40	1'-1 7/16	BC
me269	2	W12	40	1'-0	BC
mf269	2	Pc. W12	40	2'-1 7/8	
mg269	2	Pc. W12	40	1'-10 3/8	
mh269	2	Pc. W12	40	1'-6 7/8	
mi269	2	Pc. WT6	20	1'-3 3/8	4 1/4"

Field bolt recap this sheet:			
6	7/8" A325	0'-2 3/4	W/ nut
12	7/8" A325	0'-5	W/ nut

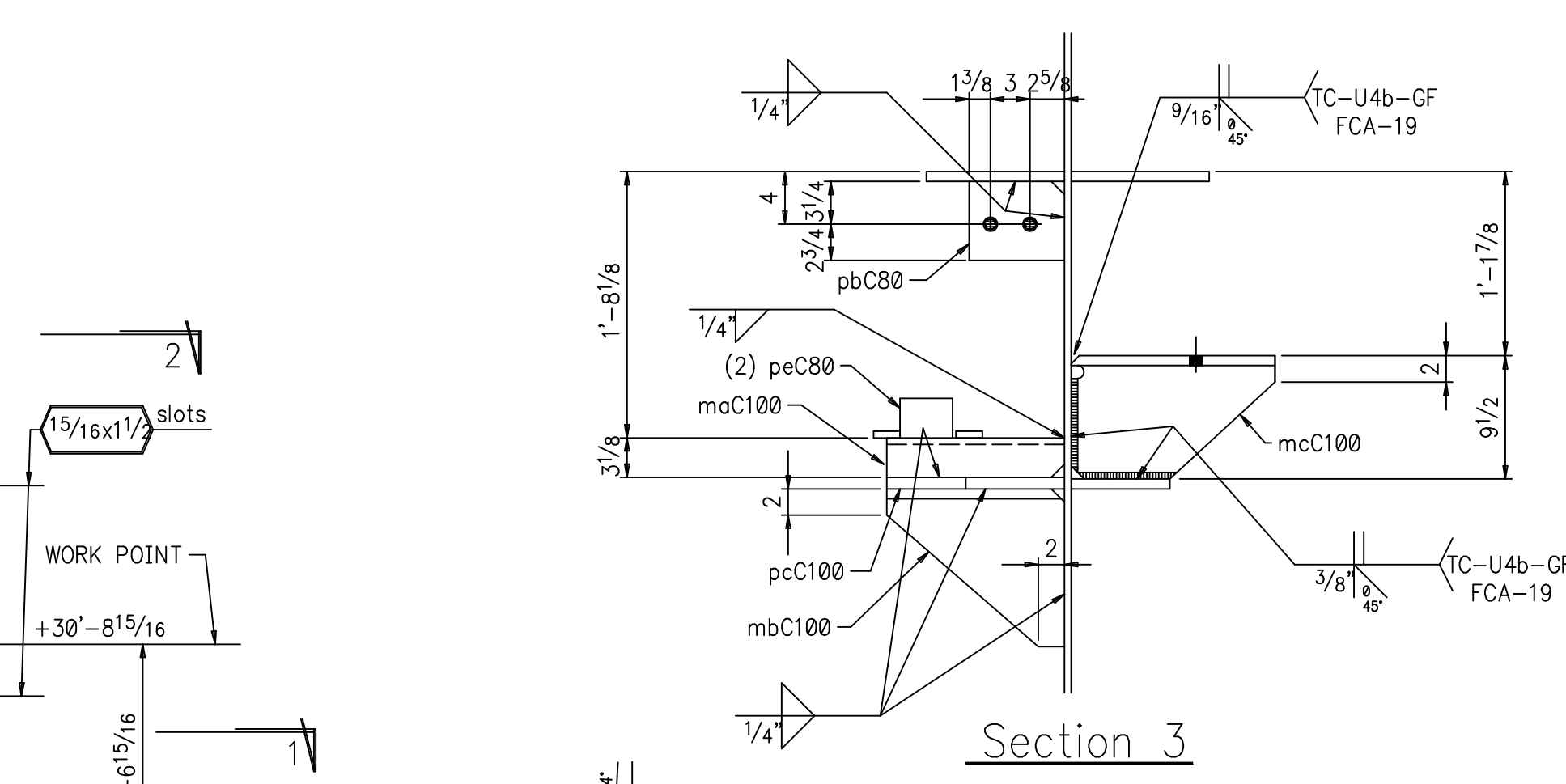
SHOP NOTES:
 1. NO PAINT WITHIN 3" OF ANY OPEN HOLE UNLESS NOTED (P).
 2. WORK THIS SHEET W/ SHEET 269.

*A325 field bolts W/ hard. flat washer
 **A325 field bolts W/ 2 hard. flat washer

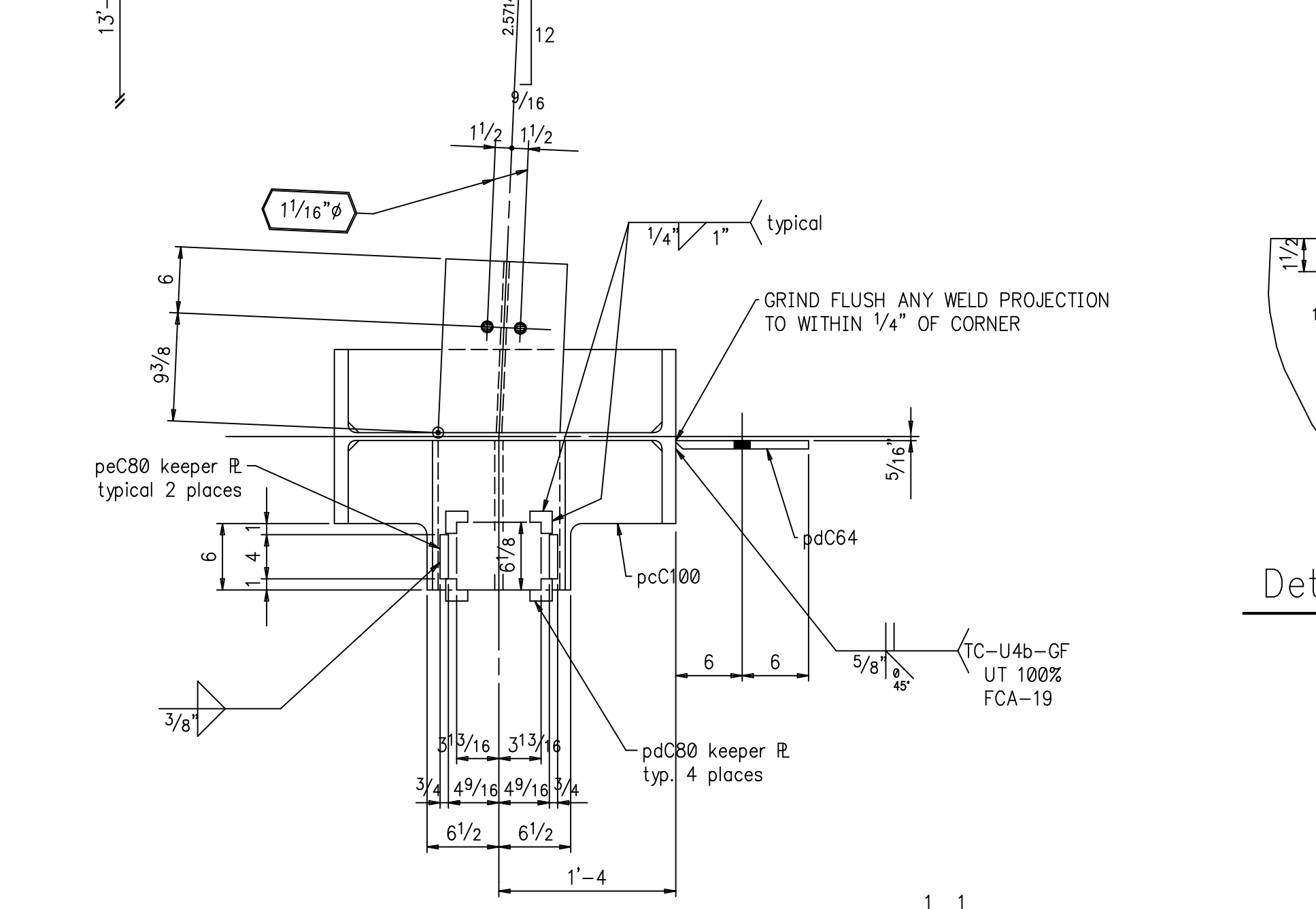
Buffalo Sports Complex
 Buffalo, New York
 Hellmuth, Obata & Kassabaum, Inc.
 Cowper Const. Management, Inc.
 B. Vaughan
 DG
 SSPC-SP6
 90-93 TNEME-ZINC
 1 5/16" φ
 E70xx



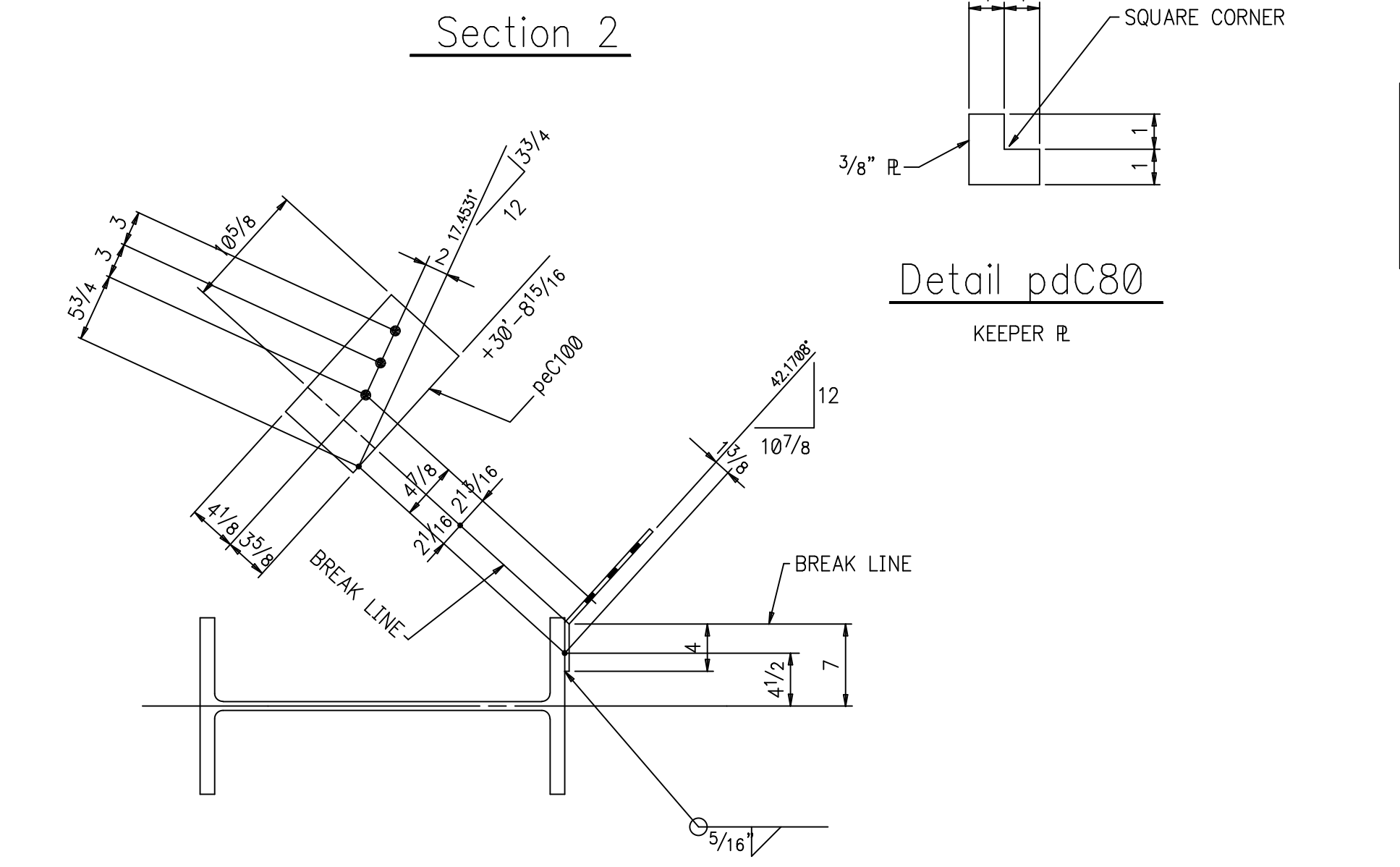
One ~ Column ~ C100A-15
D-38 (F11)



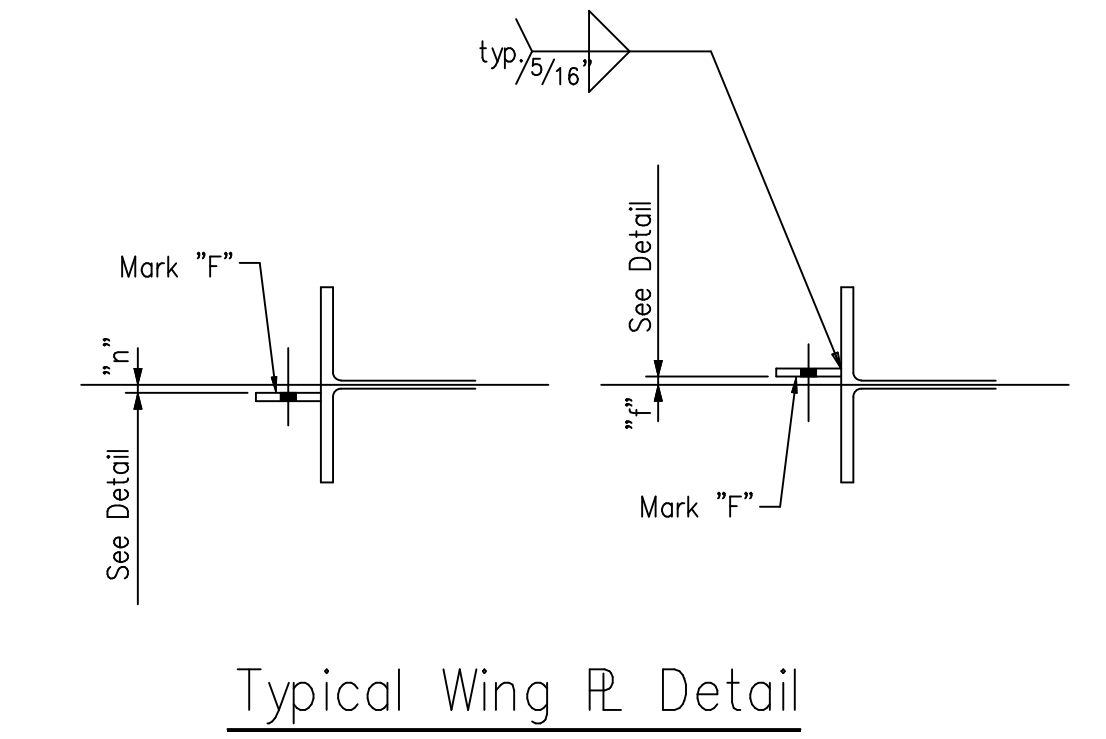
Section 3



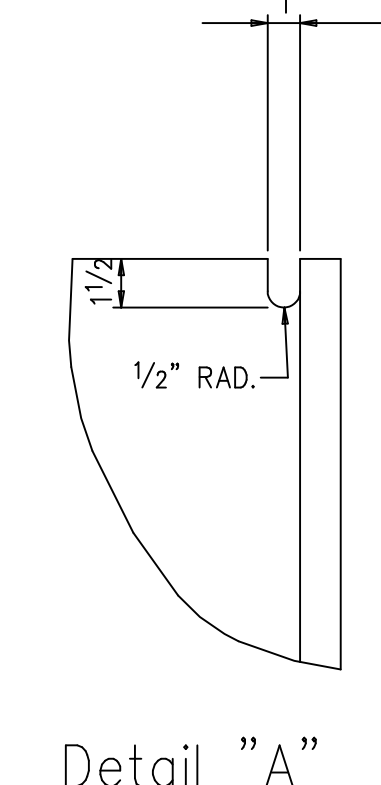
Section 2



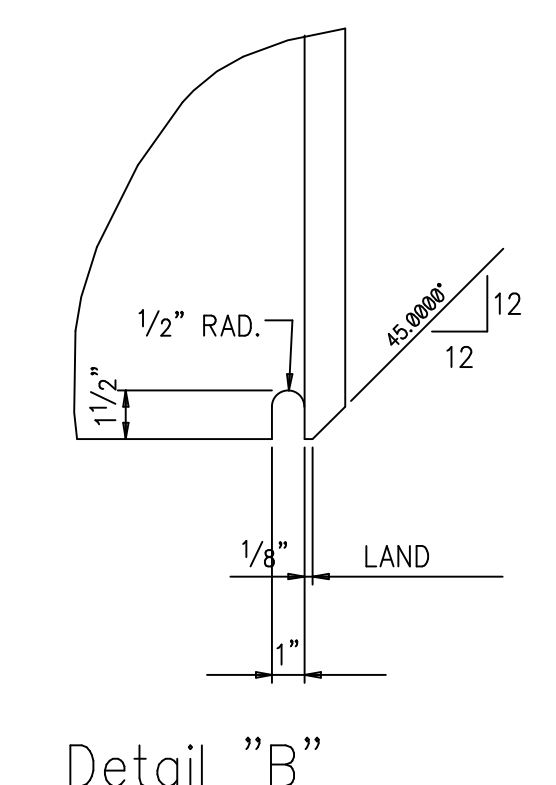
Section 1



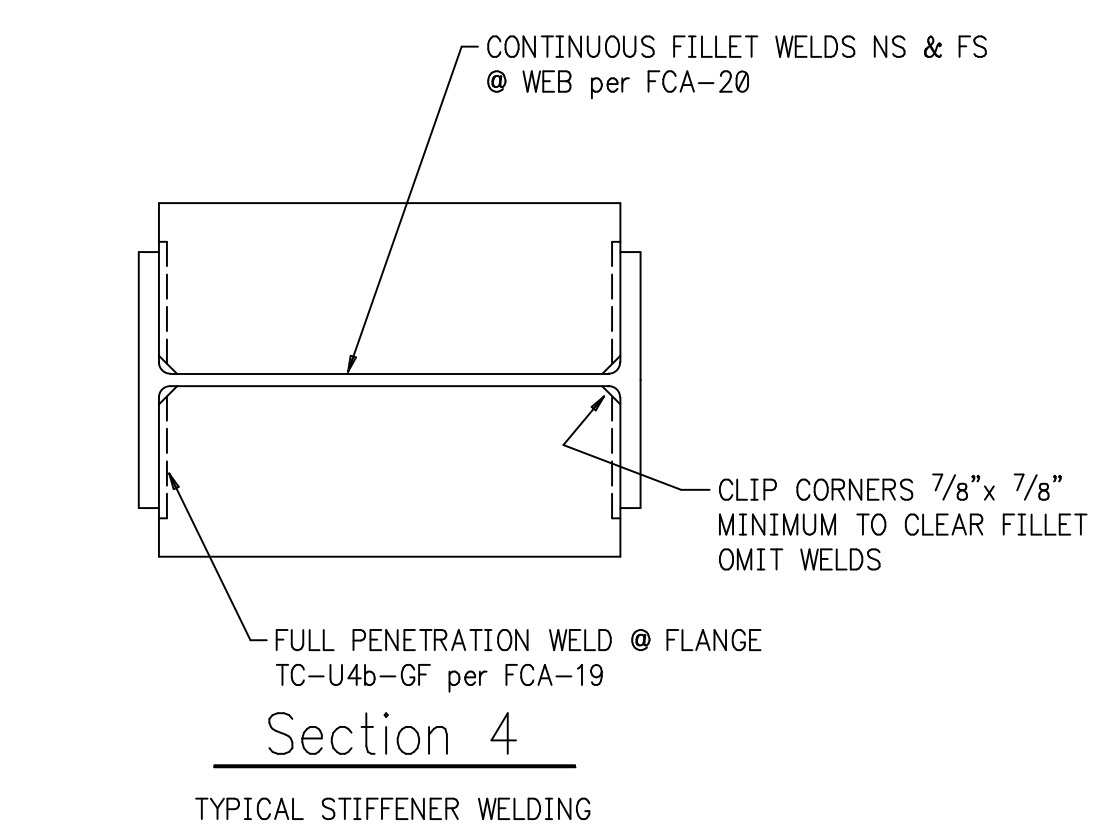
Typical Wing R Detail



Detail "A"



Detail "B"



Section 4
TYPICAL STIFFENER WELDING



Detail pdC80
KEEPER R

- SHOP NOTES:
1. MARK "F" DIMENSIONED FACE OF ALL WING PLATES OR AS SPECIFICALLY INDICATED.
 2. NO PAINT.
 3. NO WELD AT FILLETS. CLIP STIFFENERS 7/8" x 7/8" MINIMUM TYPICAL.

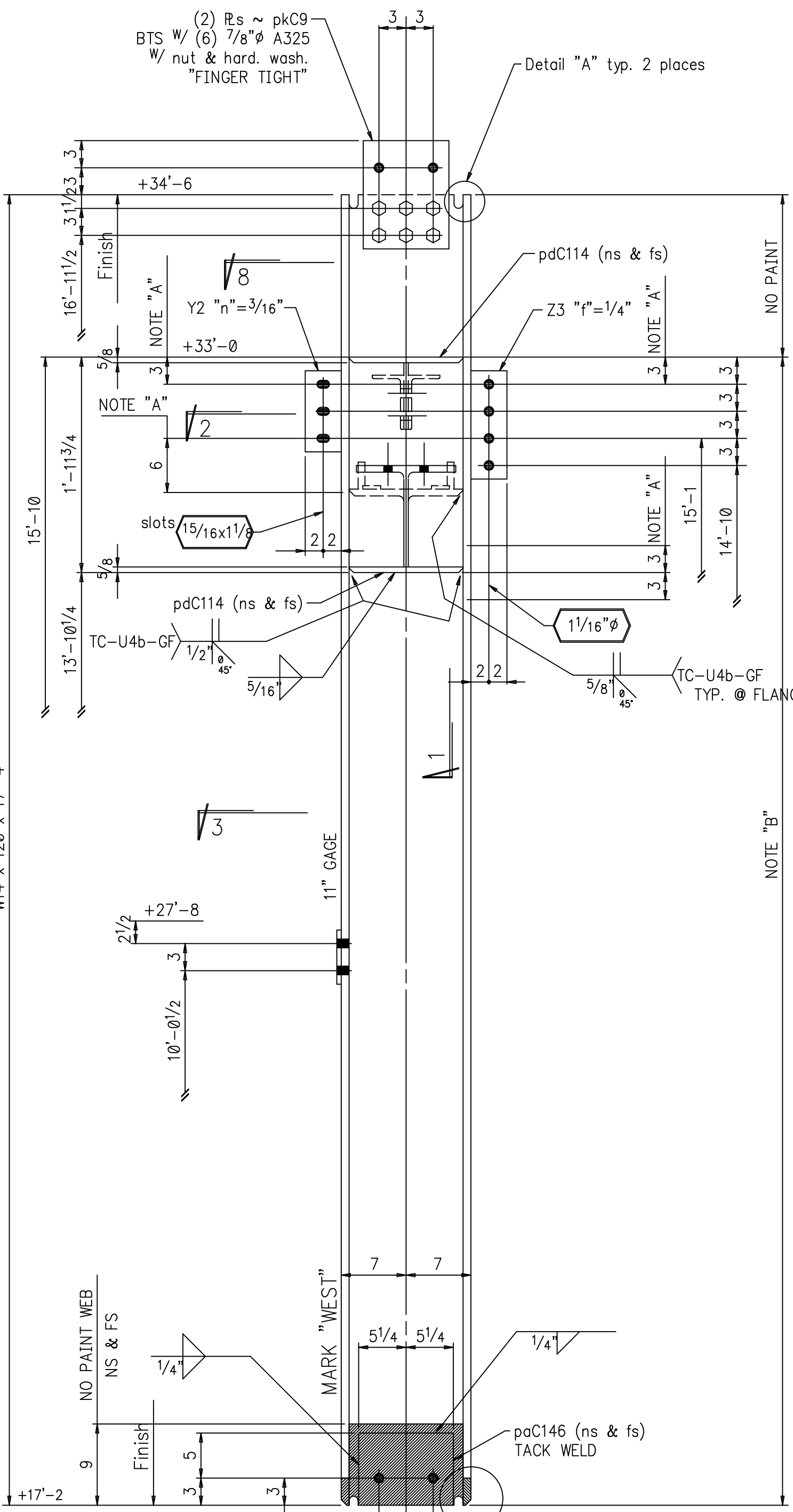
C100A-15 One	W30	211	17'-4	F2E, 8-11
ZD5	1	R. 3/4" x 7	1'-6	
paC100	2	R. 3/4" x 10 1/8	2'-4 5/16	
pbC100	1	R. 3/4" x 7 1/8	2'-4 5/16	
pcC100	1	R. 7/8" x 13 1/8	2'-4 5/16	
pdC100	6	R. 5/8" x 5	2'-4 5/16	
pdC7	2	R. 3/8" x 12	1'-0	
peC100	1	R. 3/8" x 8	1'-2 5/8	BEND
pbC80	1	R. 1/2" x 6	0'-7	
pcC80	1	R. 3/4" x 2 5/8	1'-1 1/2	FINISH
pdC80	4	R. 3/8" x 2	0'-2	
peC80	2	Bor 3" x 3/4	0'-4	
maC100	1	C12	30	1'-1 1/8
mbC100	1	W12	42	1'-1 1/8
mcC100	1	Pc. W18	76	1'-3 3/8
8		7/8" A325		0'-2 3/4
8		7/8" HARD. FLAT WASHER		9 1/2"
				W/ nut

Field bolt recap this sheet:

3	7/8" A307	0'-2 3/4	W/ H.N.
3	7/8" WASHER		

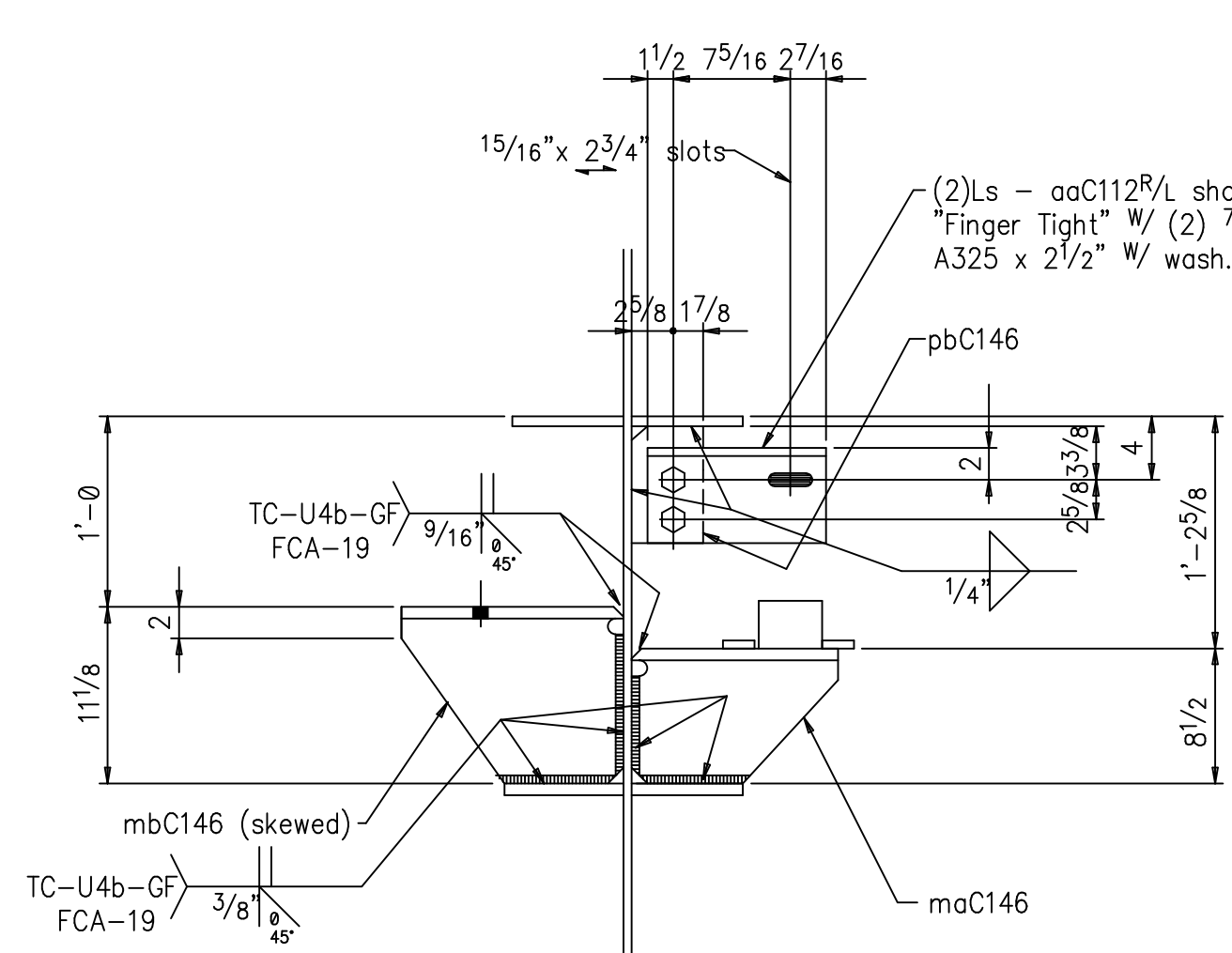
Buffalo Sports Complex
Buffalo, New York
Hellmuth, Obata & Kassabaum, Inc.
Cowper Const. Management, Inc.
B. Vaughan
DG

SSPC-SP2
NO PAINT UN
1 5/16" ϕ
E70xx

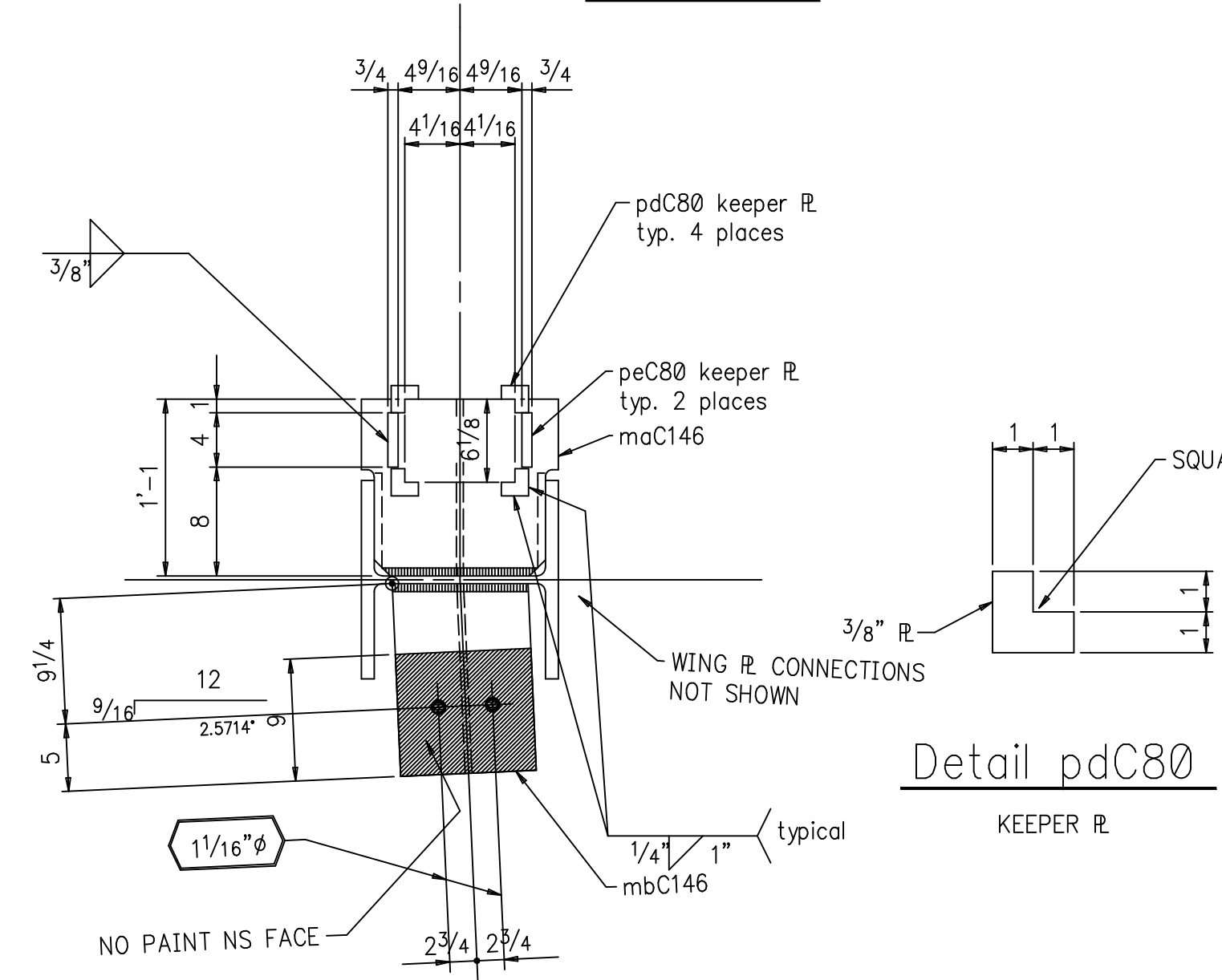


One ~ Column ~ C146A-18

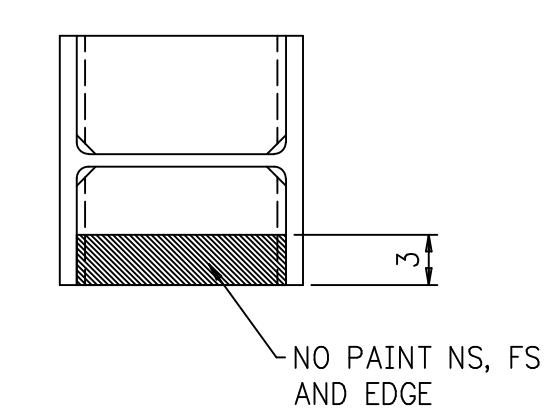
B-17 (F4)



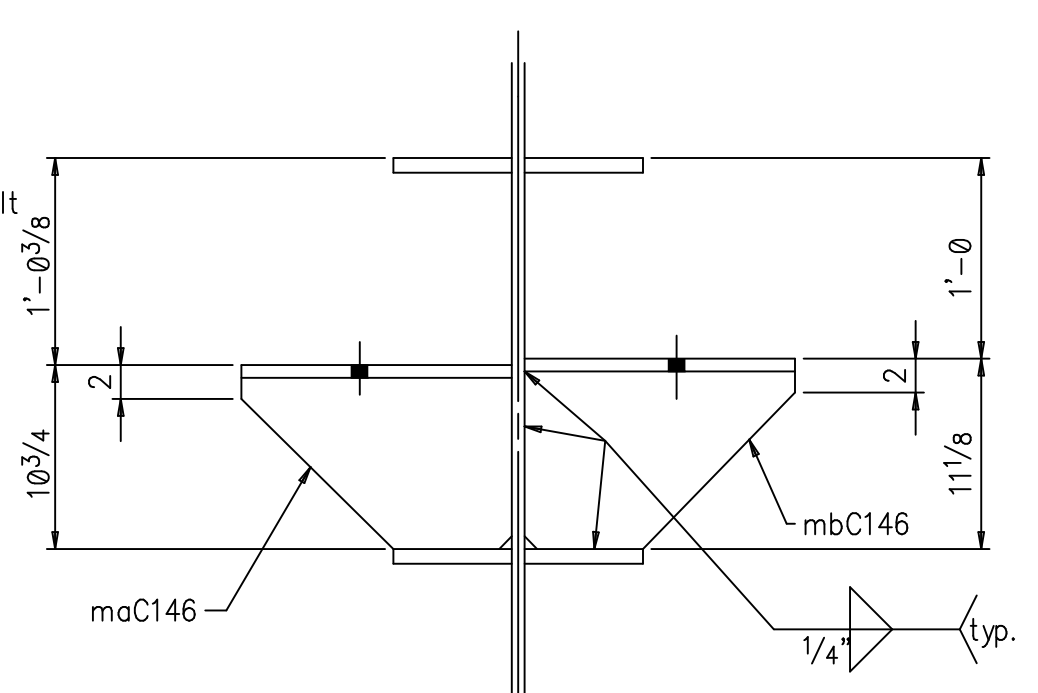
Section 1



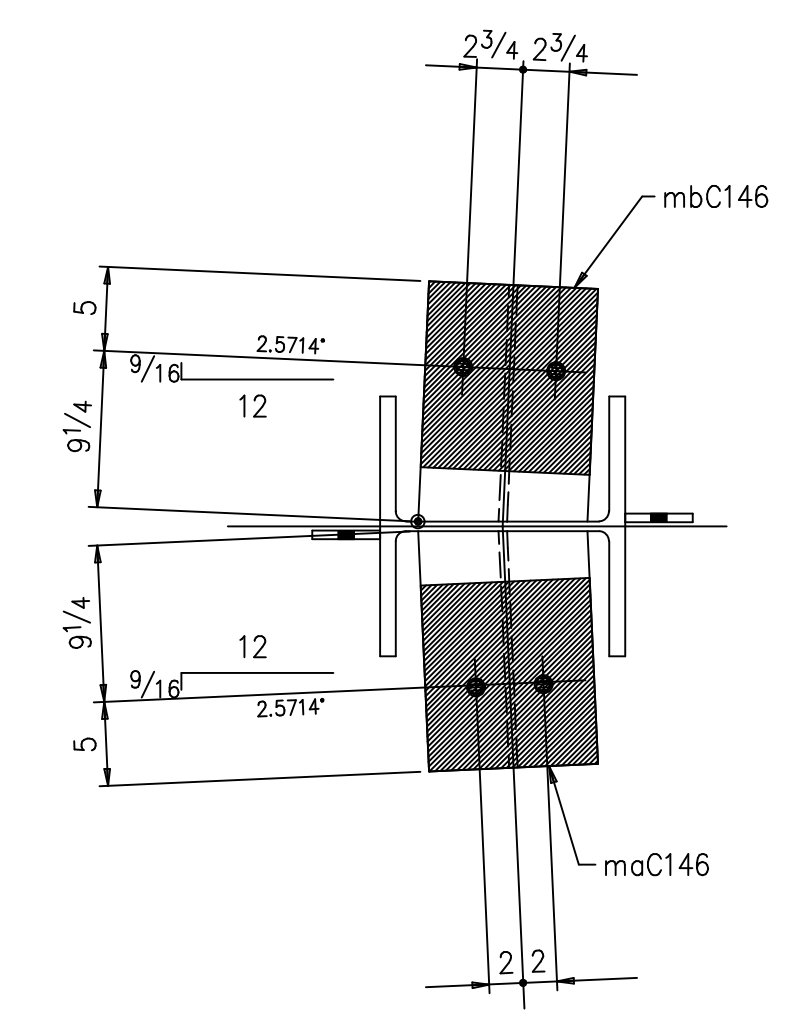
Section 2



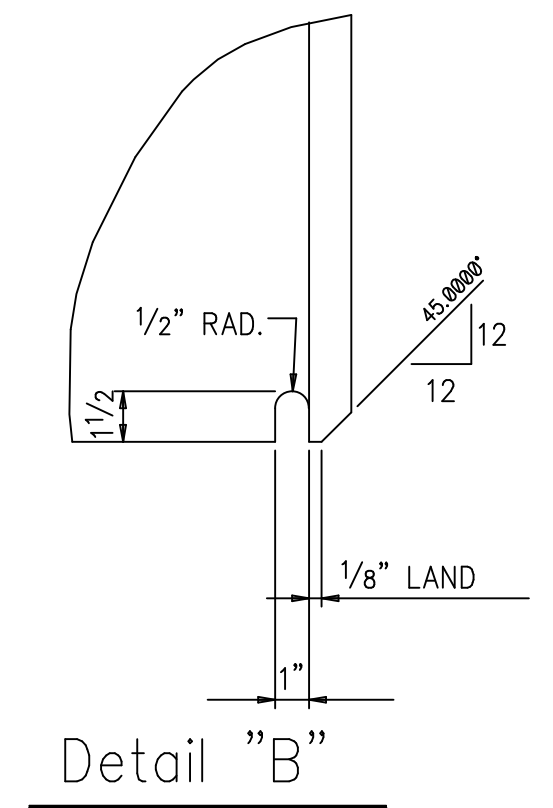
Section 8



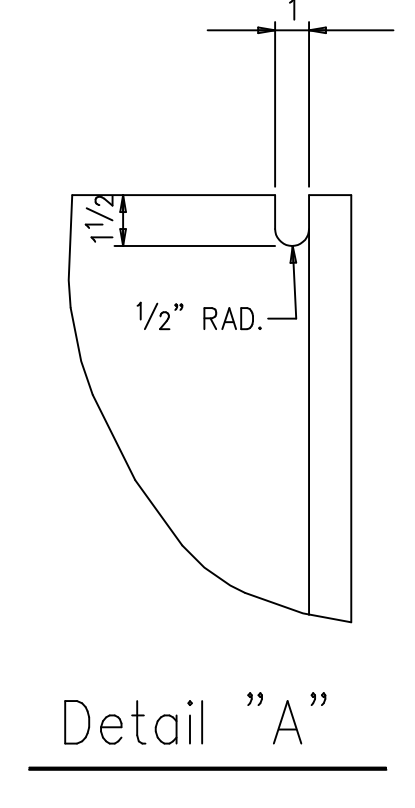
Section 6



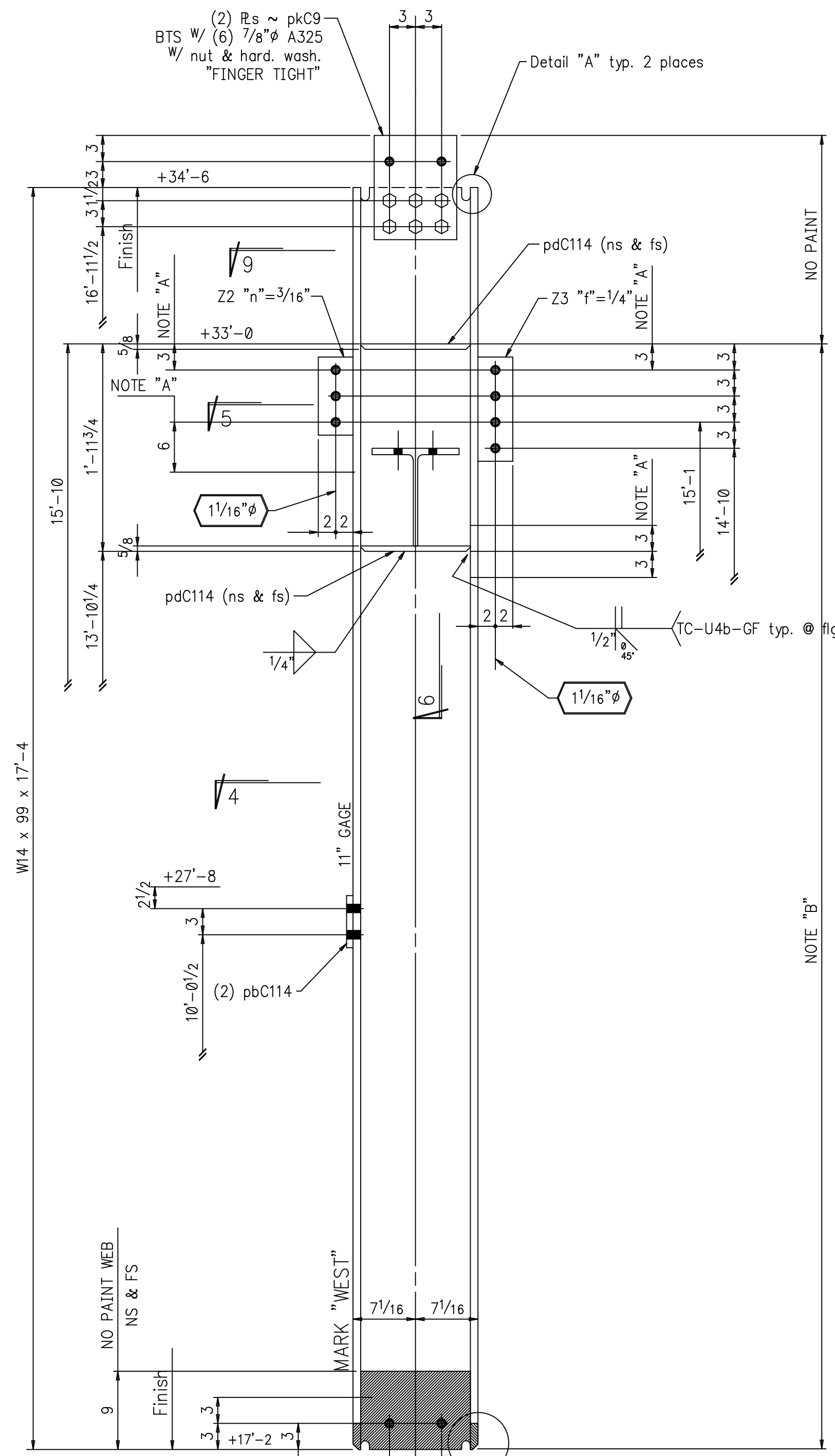
Section 5



Detail "B"

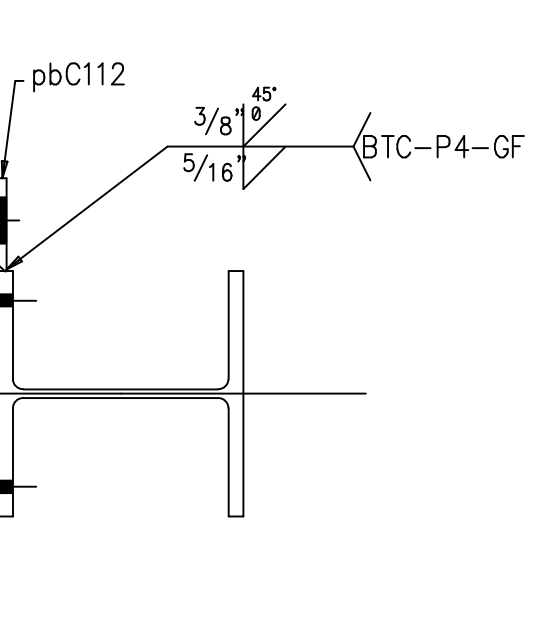


Detail "A"

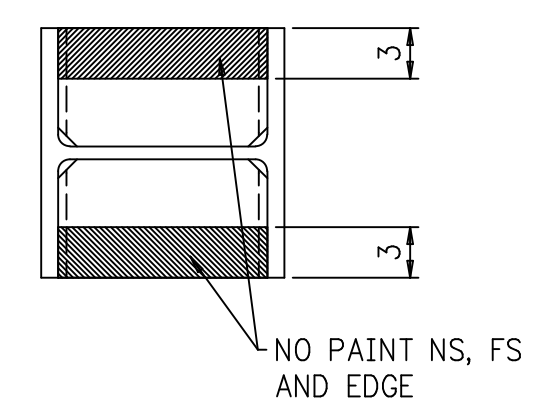


One ~ Column ~ C146B-18

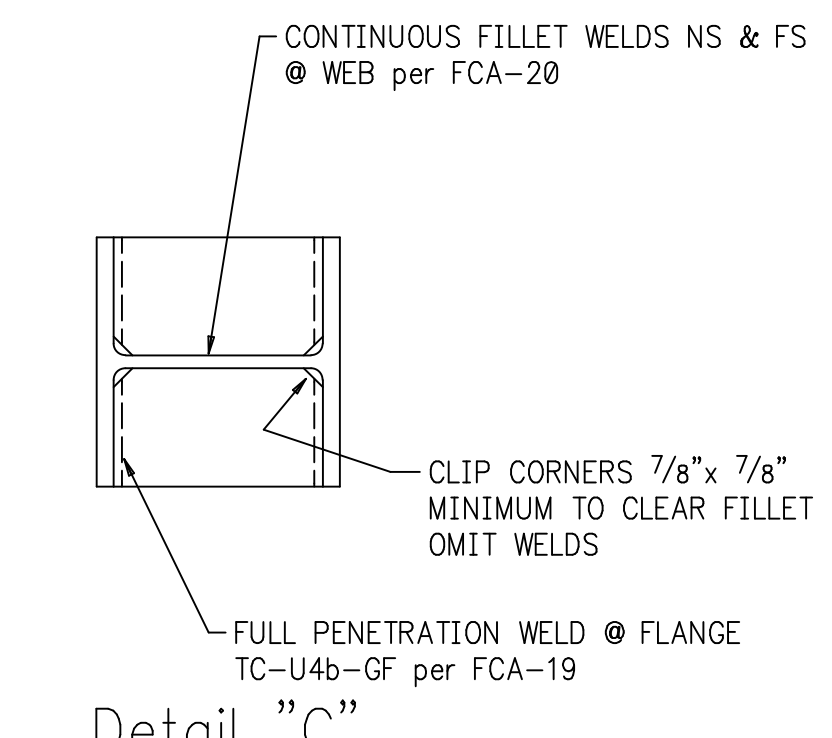
B-18 (F5)



Section 3

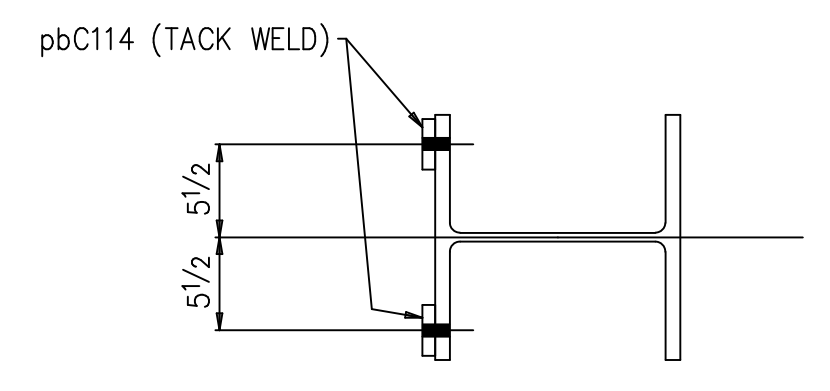


Section 9



Detail "C"

TYPICAL STIFFENER WELDING



Section 4

NOTE "A": NO PAINT OUTSIDE FACE OF FLANGE AS DIMENSIONED.

NOTE "B": SURFACE PREPARATION SSPC-SP6 PAINT 1 S/C 90-93 TNE-M-ZINC AS DIMENSIONED.

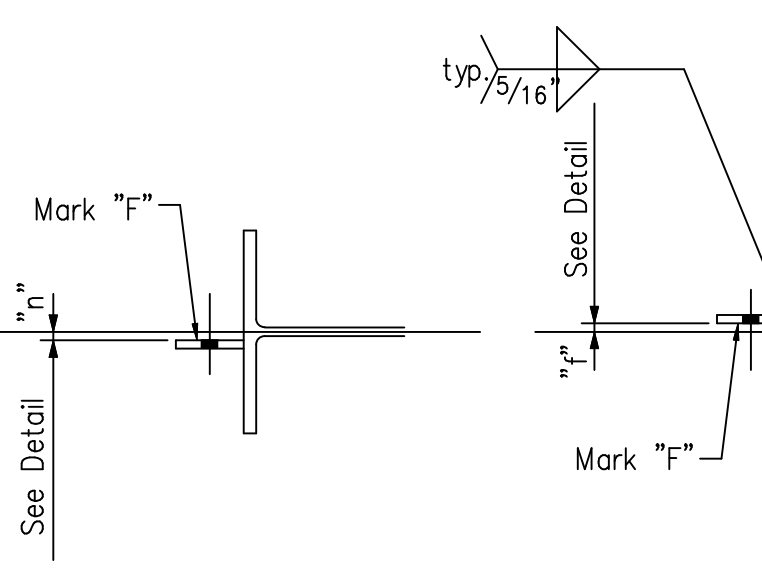
- SHOP NOTES:
1. MARK "F" DIMENSIONED FACE OF ALL WING PLATES OR AS SPECIFICALLY INDICATED.
 2. NO PAINT WITHIN 3" OF ANY OPEN HOLES UN (P).
 3. NO WELD AT FILLETS. CLIP STIFFENERS 7/8" x 7/8" MINIMUM TYPICAL.

C146A-18 One	W14	120	17'-4	F2E, 9-42
Z3	1	Bar 4"x 1/2	1'-0	
Y2	1	Bar 4"x 3/8	0'-9	
pdC114	4	R 5/8"x 7	1'-05/8	
poC146	2	R 1/4"x 8	0'-10 1/2	
poC115	1	R 5/16"x 3	0'-6	
pbC146	1	R 1/2"x 4 1/2	0'-7 1/4	
pcC80	4	R 3/8"x 2	0'-2	
peC80	2	R 3/4"x 3	0'-4	
maC146	1	Pc. W14	90	1'-1
mbC146	1	Pc. W14	68	1'-2 1/4
aaC112R/L	1/1	L-6x3 1/2 x 3/8		0'-11 1/4
pkC9	2	R 3/8"x 9		1'-0
	6	7/8" A325		0'-2 3/4
	2	7/8" A325		0'-2 1/2
	8	7/8" HARD FLAT WASHER		
paC112	1	R 5/8"x 3		0'-6
pbC112	1	R 3/8"x 5 1/2		0'-6

C146B-18 One	W14	99	17'-4	F2E, 9-49
Z3	1	Bar 4"x 1/2	0'-9	
pdC114	4	R 5/8"x 7	1'-05/8	
pbC114	2	R 1/2"x 3	0'-6	
maC146	1	Pc. W14	68	1'-2 1/4
mbC146	1	Pc. W14	68	1'-2 1/4
pkC9	2			
	6	7/8" A325		0'-2 1/2
	6	7/8" HARD FLAT WASHER		

Field bolt recap this sheet:

2	7/8" A307	0'-2 1/2	W/ nut
2	7/8" A307	0'-2 3/4	W/ nut
4	7/8" washers		



Typical Wing R Detail

Buffalo Sports Complex
Buffalo, New York
Hellmuth, Obata & Kassabaum, Inc.
Cowper Const. Management, Inc.
B. Vaughan
DG

AS NOTED
SSPC-SP2 UN
15/16"φ
E70xx