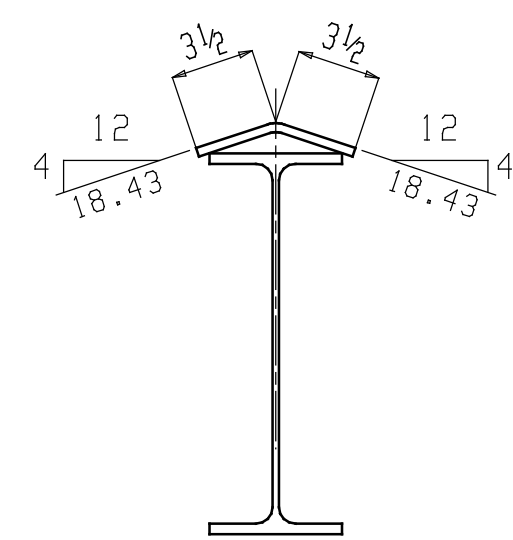
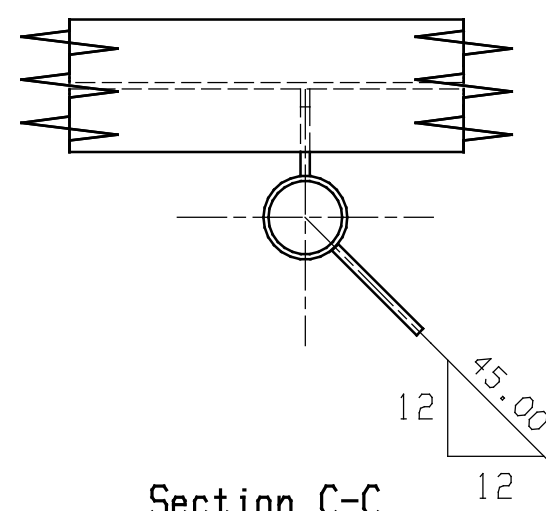


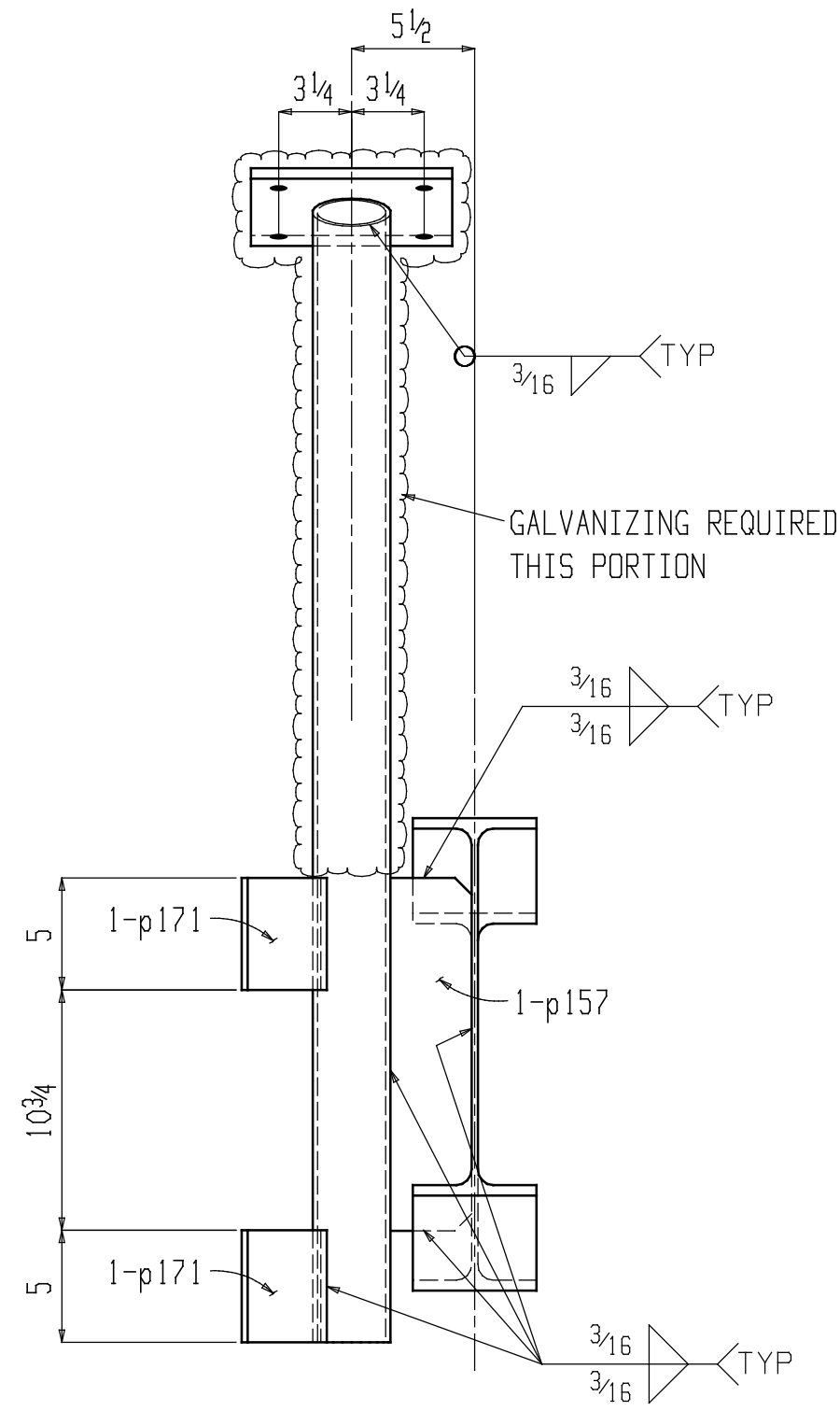
Section A-A
101B1



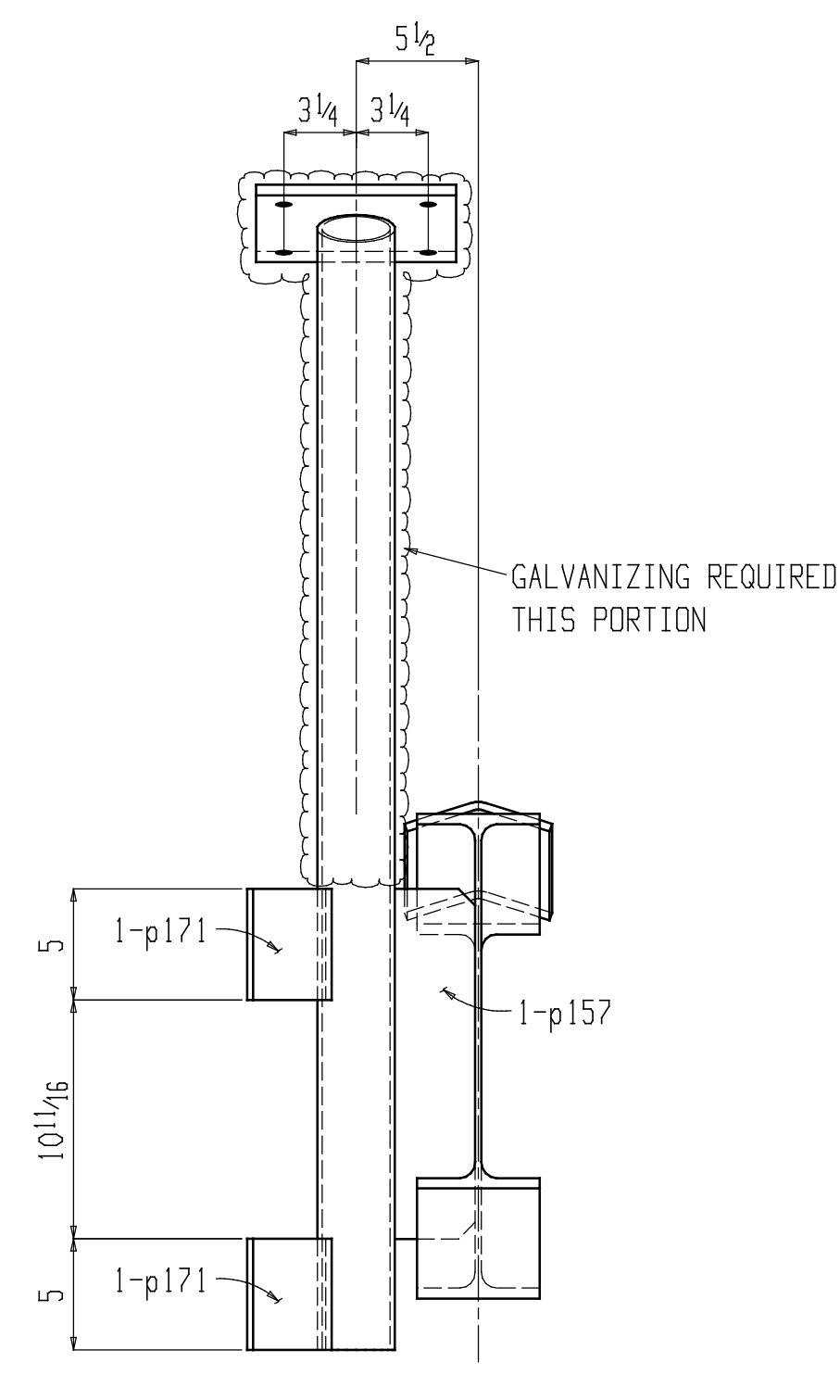
Section B-B
101B1



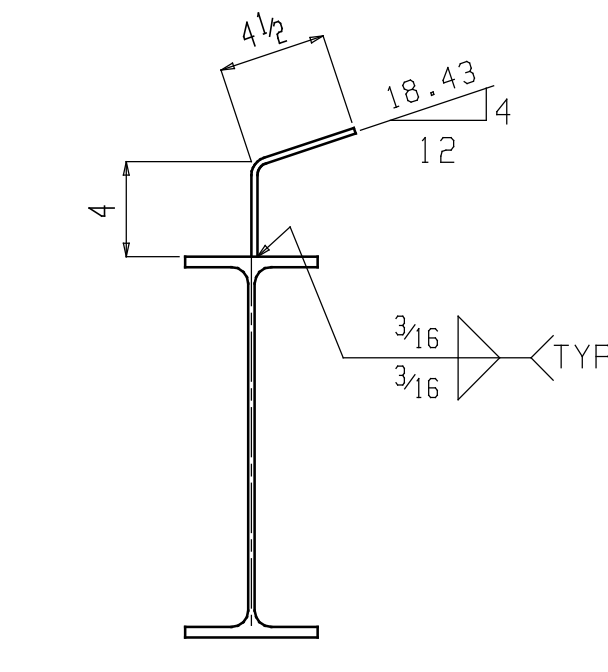
Section C-C
101B1



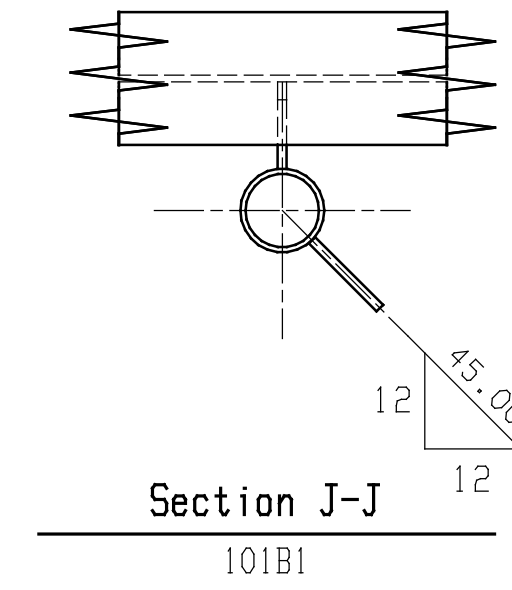
Section D-D
101B1



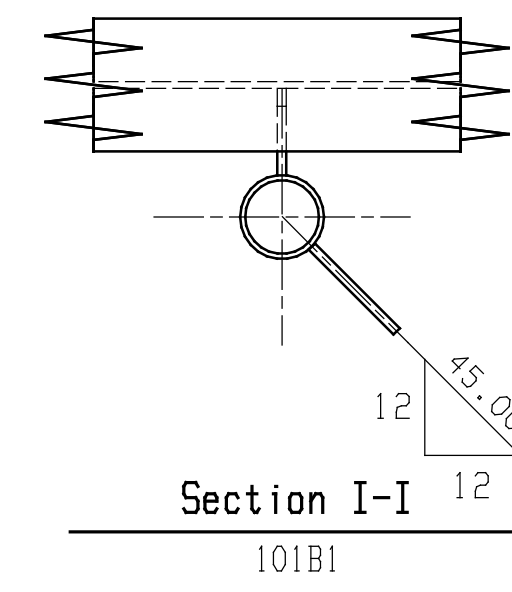
Section F-F
101B1



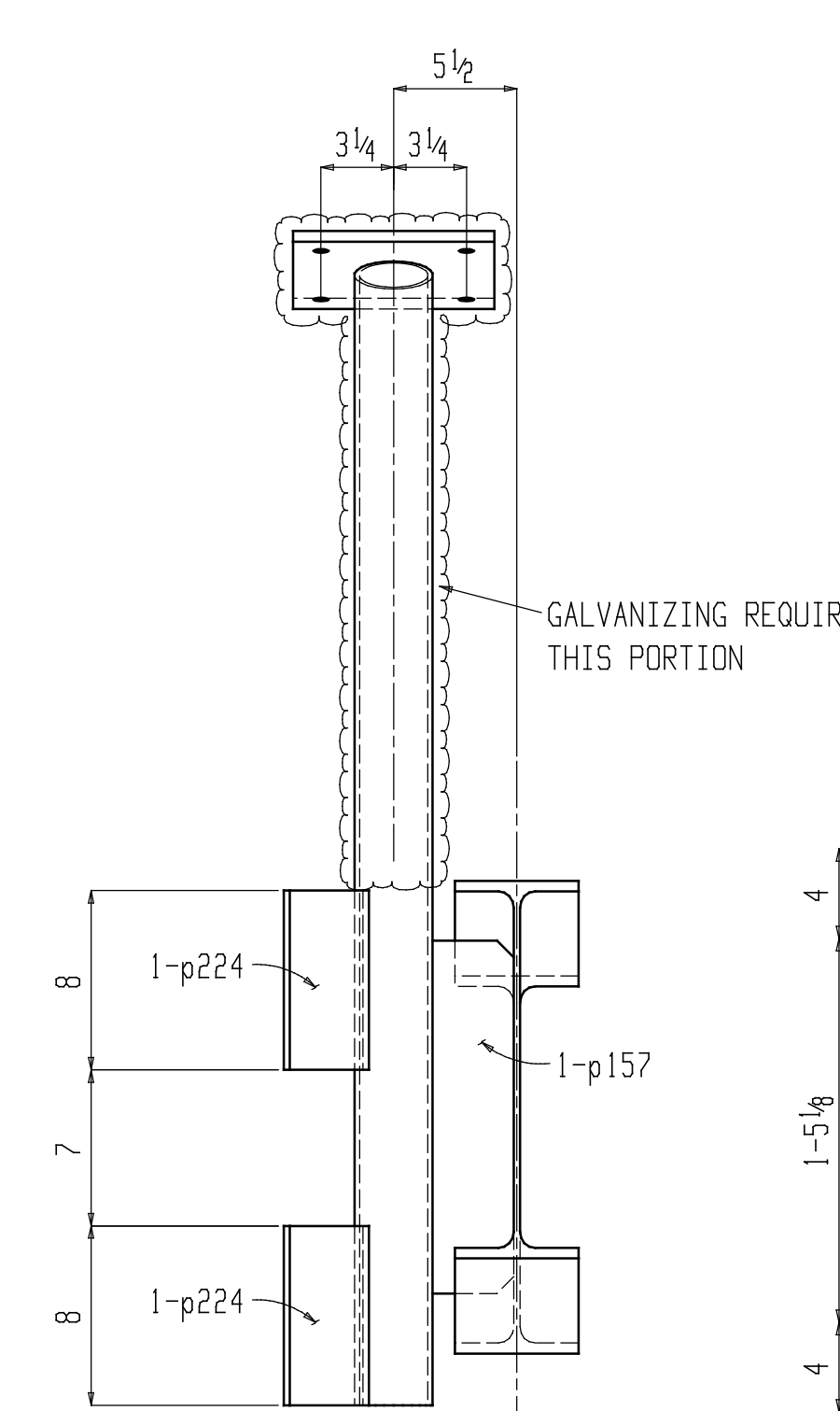
Section G-G
101B1



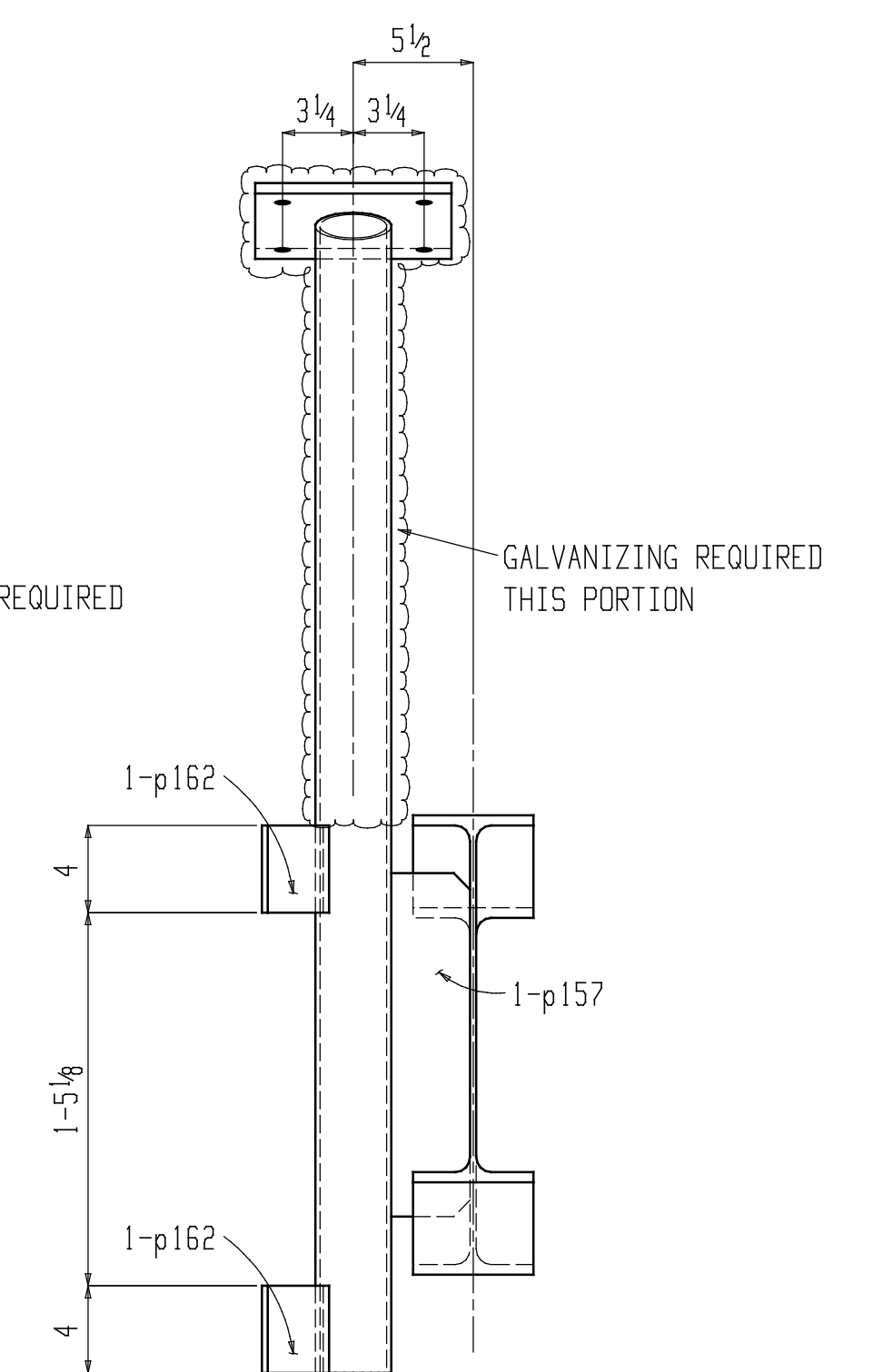
Section J-J
101B1



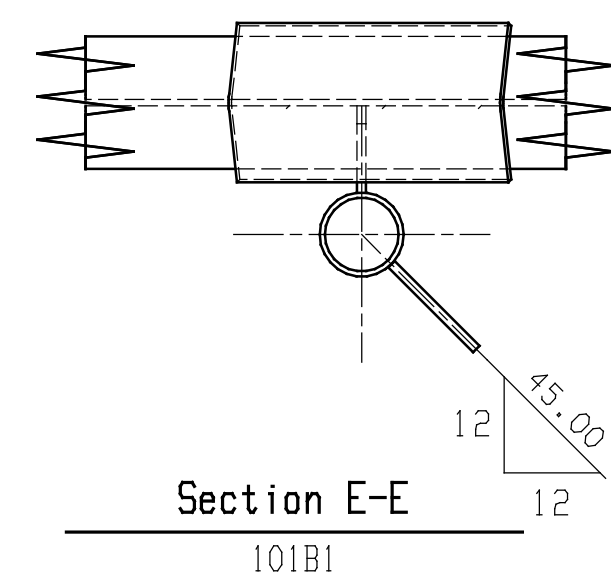
Section I-I
101B1



Section K-K
101B1



Section L-L
101B1



Section E-E
101B1

SHOP NOTE: WORK THIS SHEET WITH SHEET 101B/B.

- SHOP NOTES:
1. ALL REENTRANT CUTS TO HAVE 1/2" RADIUS TYP.
 2. SEE BILL OF MATERIAL FOR MATERIAL GRADE.
 3. WELD E70 SERIES LOW HYDROGEN ELECTRODES.
 4. SYMBOL INDICATING FRAMING SIDE (SPOT w/PAIN): ☒
 5. EXTENSION DIMENSION ORIGIN POINT INDICATED THIS: ●
 6. HOLES ARE 3/16" DIAMETER UNLESS NOTED OTHERWISE.

PAINT: 1 S/C STD. IRON OXIDE PRIMER 1.5 MIL MIN. UN

SHOP NOTE:
MATERIALS SO NOTED ARE TO BE GALVANIZED PRIOR TO FINAL ASSEMBLY. WELDED JOINTS OF GALVANIZED MATERIALS ARE TO BE SEAL WELDED. DO NOT PAINT GALVANIZED MATERIALS. PROVIDE VENT HOLES AS REQUIRED. TOUCH UP GALVANIZING WHERE NECESSARY.

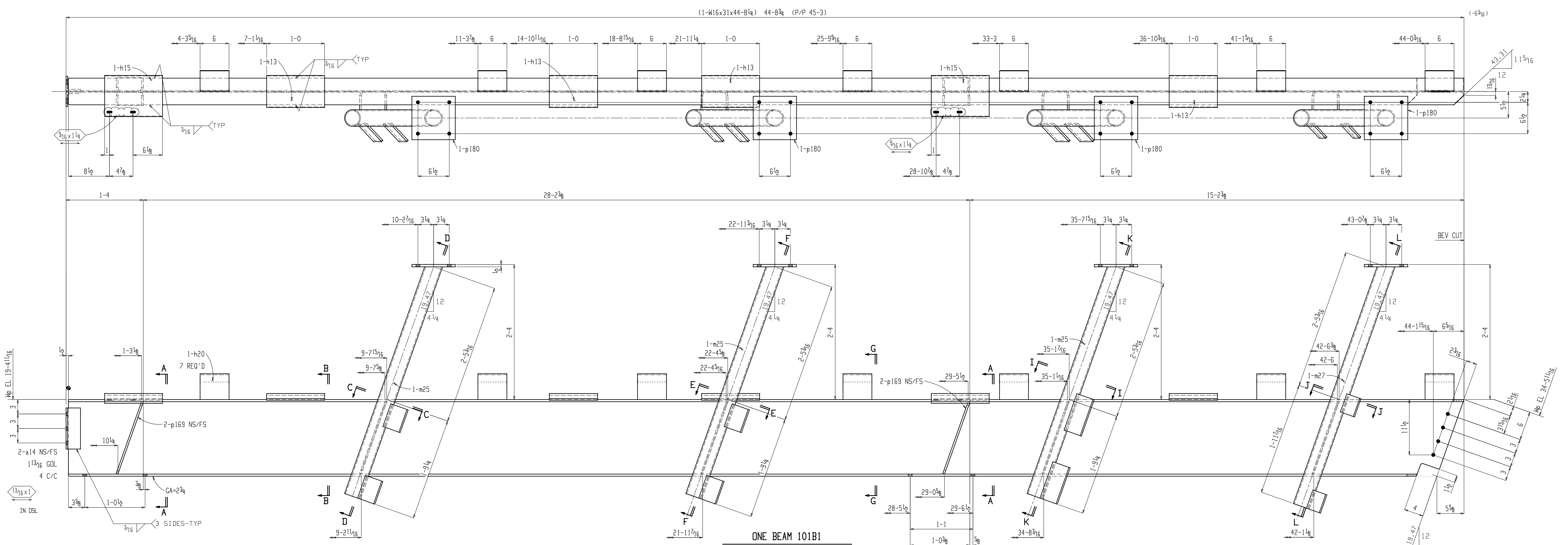
PRINT RECORD					
Date	Quan.	For	Date	Quan.	For
10-12-2004	6	APPROVAL			
12-07-2004		FABRICATION/FIELD USE			

Rev.	Date	Description	By

IRWIN STEEL
15740 Highway 114 ~ Justin, Texas 76247
Phone (817) 636-2508 ~ Fax (817) 636-2506

Job Name: DALLAS EXECUTIVE AIRPORT
Location: DALLAS, TEXAS
Customer: MERIDIAN COMMERCIAL, L.P.
Architect: GRW WILLIS, INC.

DRAWN: BV DETAILING JOB NO: 0437 SHEET NO. 101A/B
CHECKED: DG CAD NO:



LINE	MINDR MARK	QUAN UNIT	QUAN TOTAL	MATERIAL DESCRIPTION	MAT'L GRADE	LENGTH		PIECE MARK	REMARKS	WEIGHT		ORDER ITEM
						FT	IN			TOTAL		
1			ONE	BEAM				101B1			1718	
2	101B1	1	1	W16x31	A992	44	8 1/4		BIE		1385	1-17
3	m27	1	1	PIPE 3 STD	A53-B	4	5 1/4		BIE GALVANIZE		34	
4	m25	3	3	PIPE 3 STD	A53-B	4	3 1/16		BIE GALVANIZE		97	
5	a14	2	2	L3x3x5/16	A36	0	8 1/2				9	
6	p180	4	4	PL 1/2x9	A36	0	9		GALVANIZE		46	
7	h15	2	2	BPL 3/8x8 7/8	A36	1	0		BENT		23	
8	h13	4	4	BPL 3/8x6 7/8	A36	1	0		BENT		35	
9	p224	2	2	FL 3/8x5	A36	0	8				9	
10	p171	4	4	FL 3/8x5	A36	0	5				11	
11	p162	2	2	FL 3/8x4	A36	0	4				3	
12	p157	4	4	PL 3/8x3 3/8	A36	1	3 3/4				24	
13	p169	4	4	PL 3/8x2 3/4	A36	1	3 3/4				18	
14	h20	7	7	BPL 1/4x8 1/8	A36	0	6		BENT		24	
15												
16				FIELD BOLTS								
17		8	8	3/4 Dia A325N		0	2 1/2		1HD WASH			
18		16	16	3/4 Dia A325N-G		0	2 1/4		1HD WASH			
19		4	4	1/2 Dia A307		0	1 3/4		2FL WASH			
20												
21												
22												
23												
24												
25												

SHOP NOTE: WORK THIS SHEET WITH SHEET 101A/B.

- SHOP NOTES:
1. ALL REENTRANT CUTS TO HAVE 1/2" RADIUS TYP.
 2. SEE BILL OF MATERIAL FOR MATERIAL GRADE.
 3. WELD E70 SERIES LOW HYDROGEN ELECTRODES.
 4. SYMBOL INDICATING FRAMING SIDE (SPOT w/PAIN):
 5. EXTENSION DIMENSION ORIGIN POINT INDICATED THUS:
 6. HOLES ARE 1/8" DIAMETER UNLESS NOTED OTHERWISE.

PAINT: 1 S/C STD. IRON OXIDE PRIMER 1.5 MIL MIN. UN

SHOP NOTE:
MATERIALS SO NOTED ARE TO BE GALVANIZED PRIOR TO FINAL ASSEMBLY. WELDED JOINTS OF GALVANIZED MATERIALS ARE TO BE SEAL WELDED. DO NOT PAINT GALVANIZED MATERIALS. PROVIDE VENT HOLES AS REQUIRED. TOUCH UP GALVANIZING WHERE NECESSARY.

PRINT RECORD					
Date	Quan.	For	Date	Quan.	For
10-12-2004	6	APPROVAL			
12-07-2004		FABRICATION/FIELD USE			

Rev.	Date	Description	By

IRWIN STEEL
15740 Highway 114 ~ Justin, Texas 76247
Phone (817) 636-2508 ~ Fax (817) 636-2506

Job Name: DALLAS EXECUTIVE AIRPORT
Location: DALLAS, TEXAS
Customer: MERIDIAN COMMERCIAL, L.P.
Architect: GRW WILLIS, INC.

DRAWN: BV DETAILING JOB NO: 0437 SHEET NO. 101B/B
CHECKED: DG CAD NO: