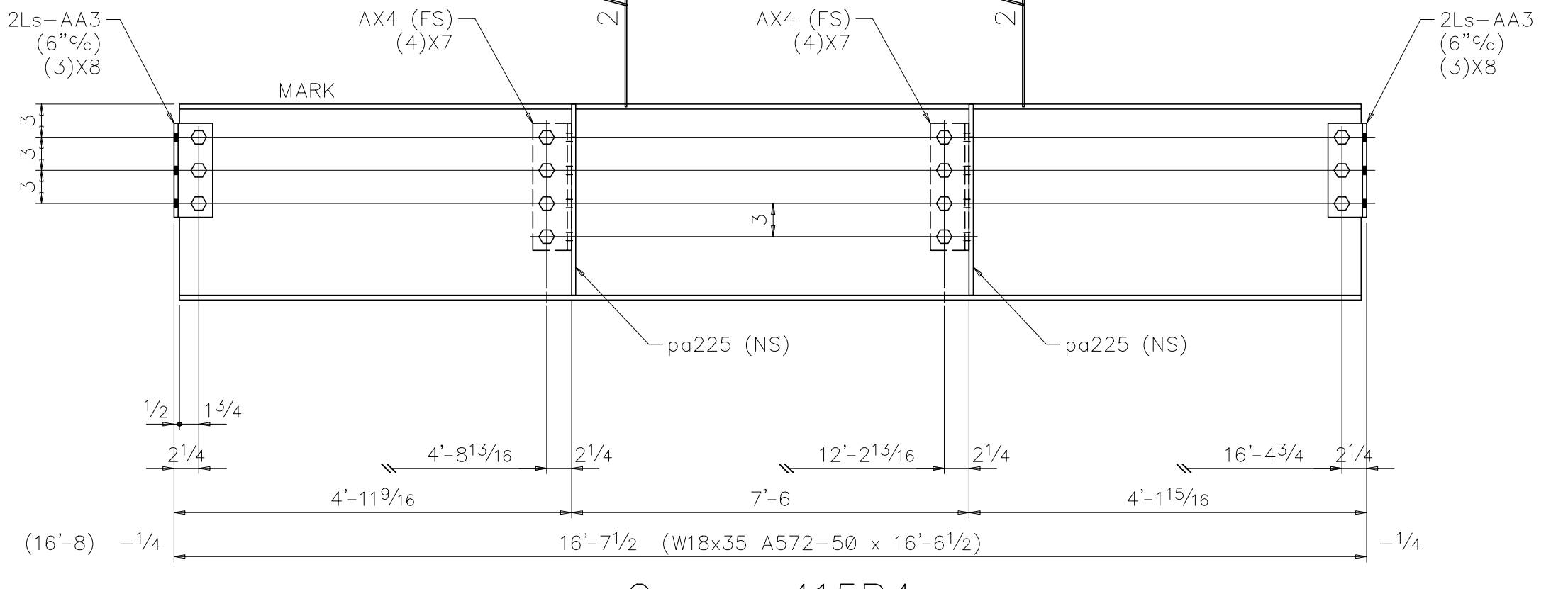
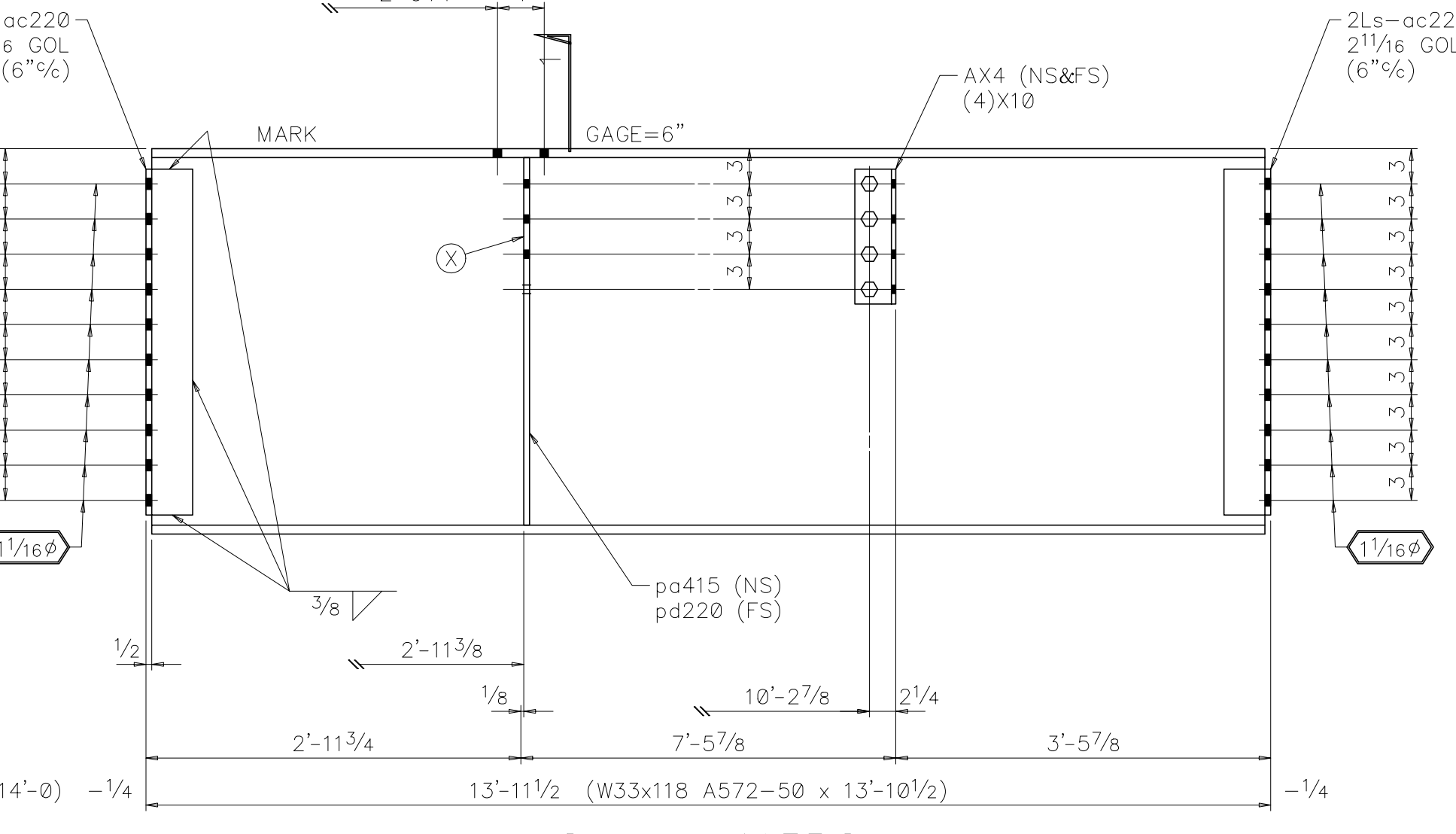


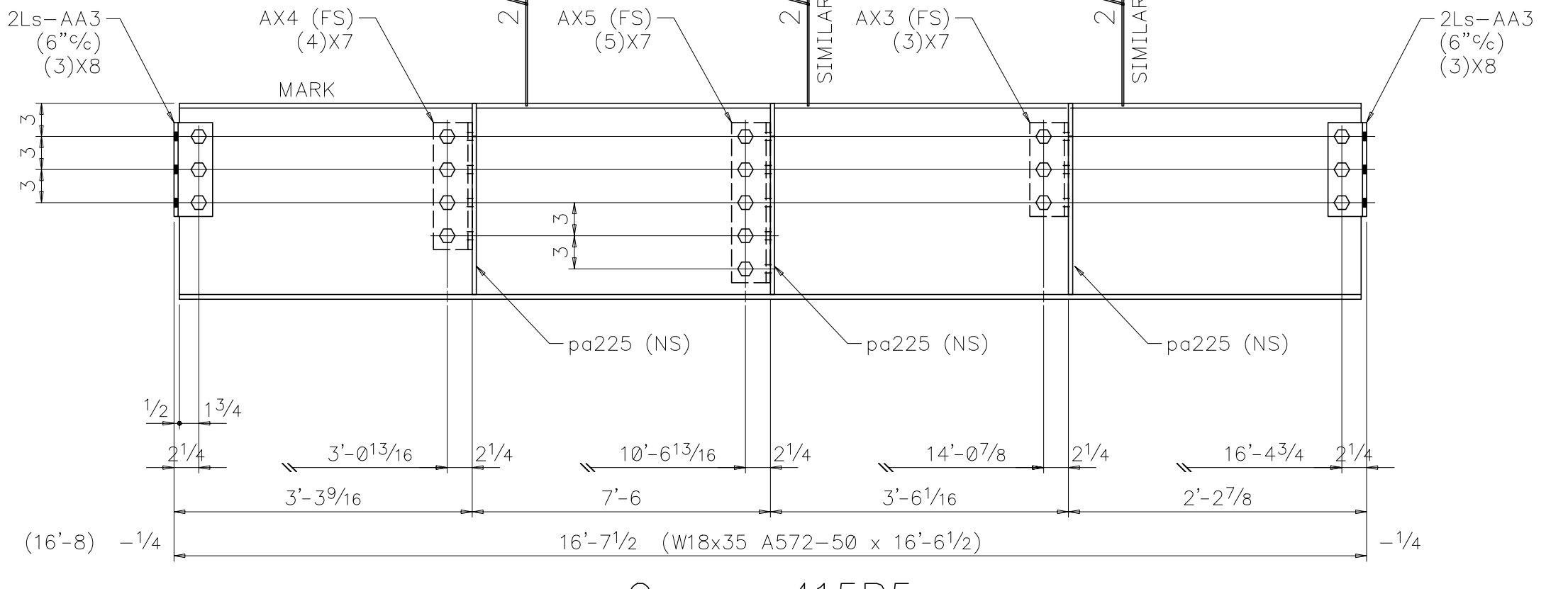
One ~ 415B1
(6) 3/4" x 1 3/4" A325 LIB
(14) 1" x 2 3/4" A325 LIB



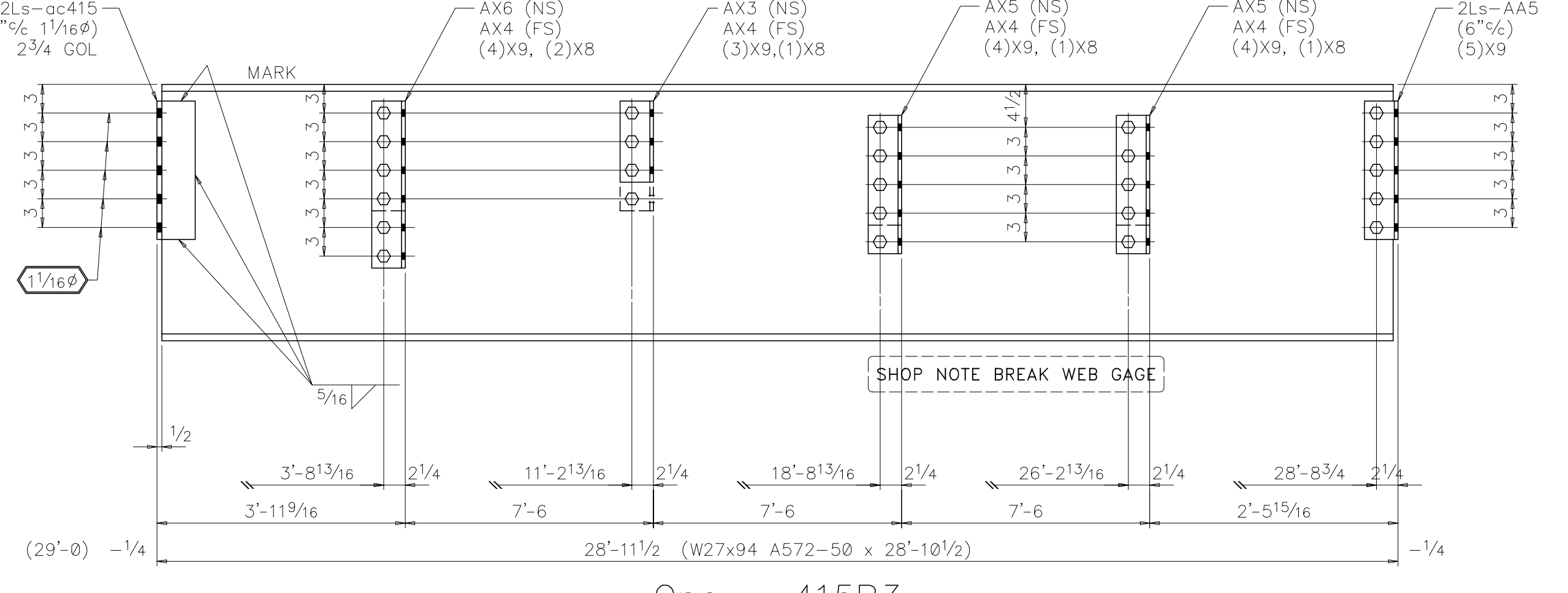
One ~ 415B4
(6) 3/4" x 2 1/4" A325 LIB
(6) 3/4" hard flat wash.



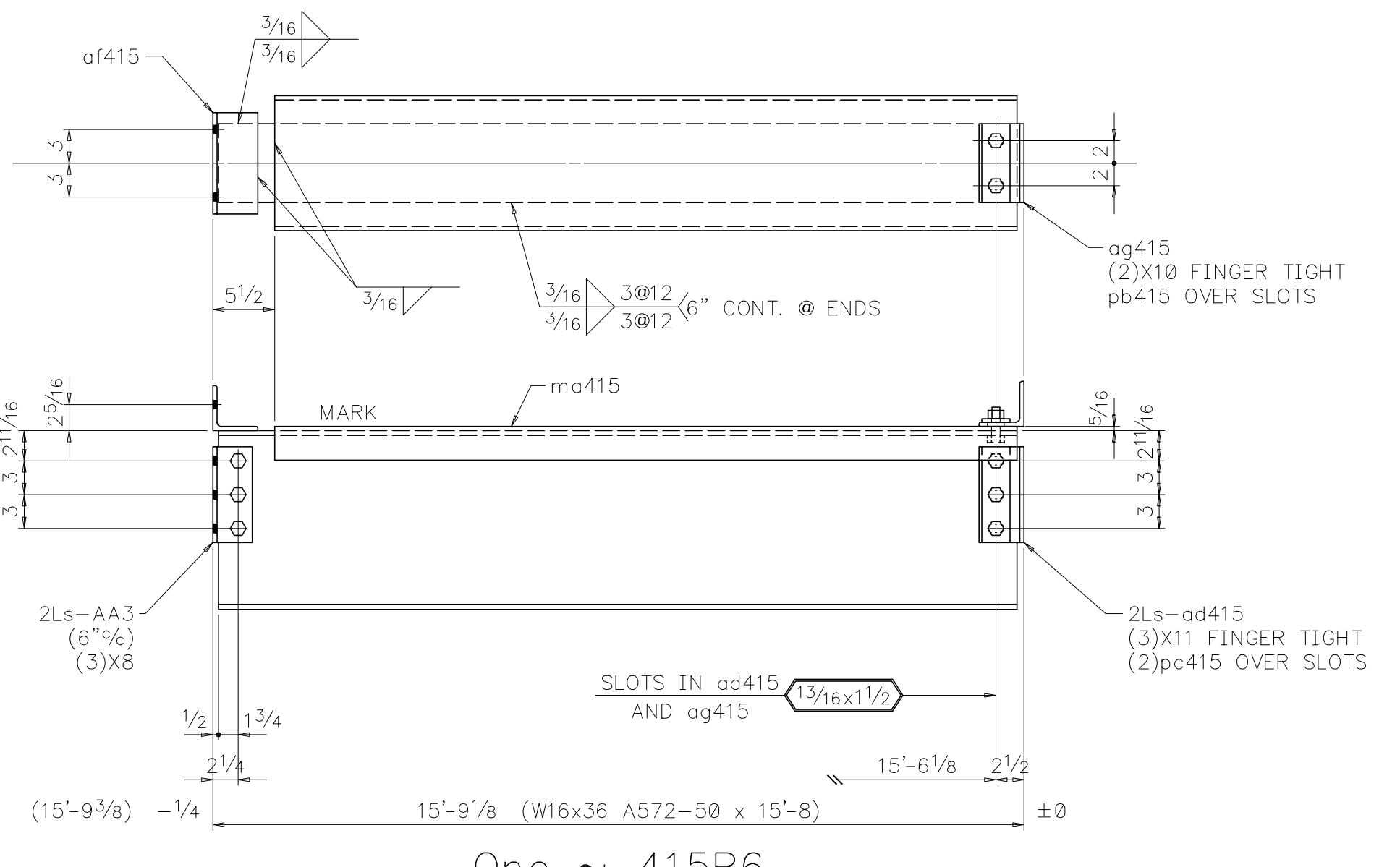
One ~ 415B2
(16) 1" x 2 1/4" A325 LIB
(10) 1" x 2 3/4" A325 LIB



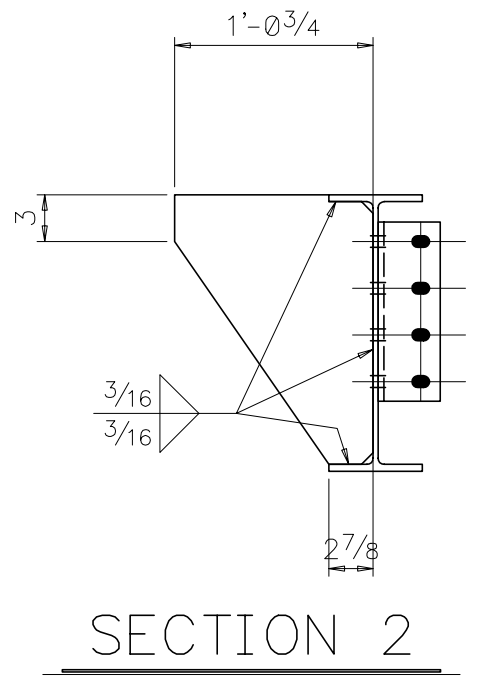
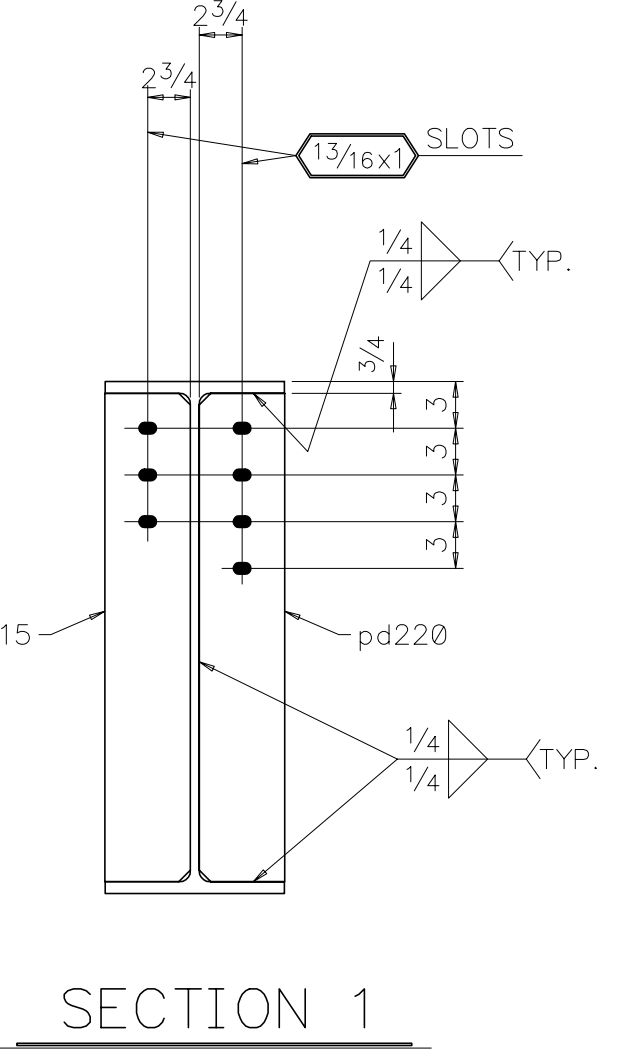
One ~ 415B5
(6) 3/4" x 2 1/4" A325 LIB
(6) 3/4" hard flat wash.



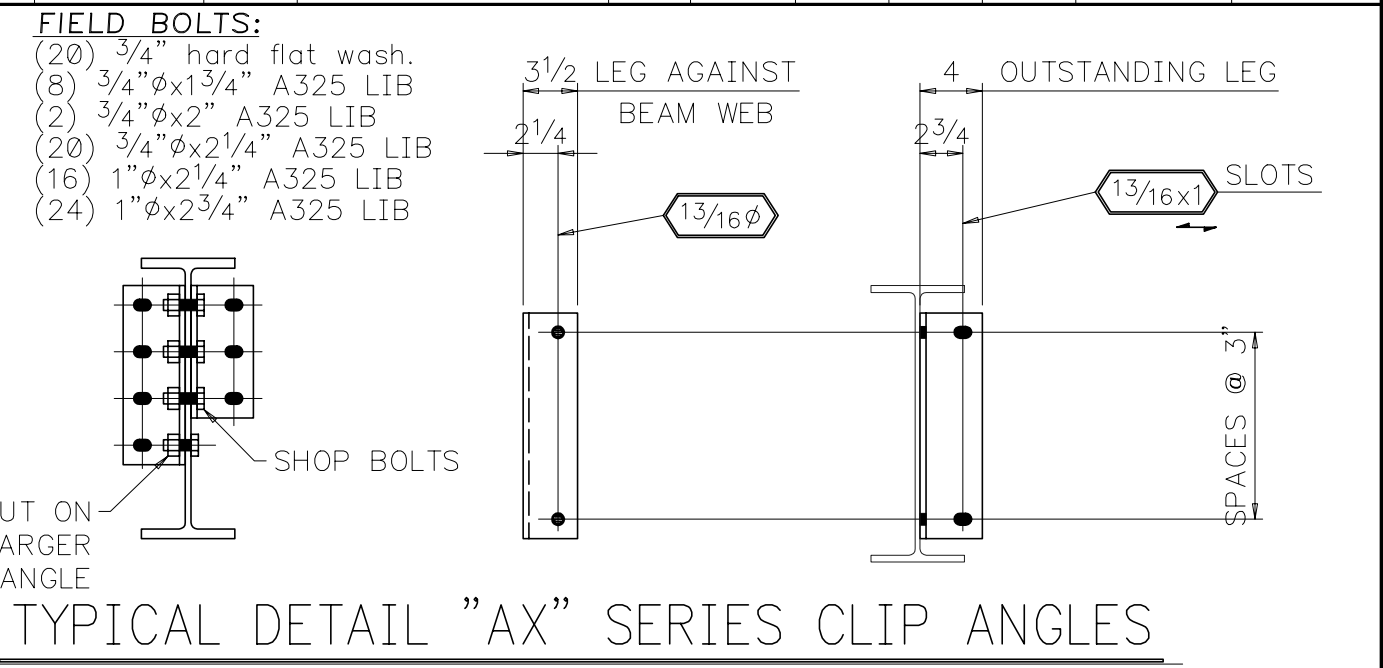
One ~ 415B3
(2) 3/4" x 1 3/4" A325 LIB
(8) 3/4" x 2 1/4" A325 LIB
(8) 3/4" hard flat wash.



One ~ 415B6
(2) 3/4" x 2" A325 LIB



BILL OF MATERIAL										
SHIP	MARK	NO. PCS.	DESCRIPTION	LENGTH		FAB MARK	MAT'L. A36 U.N.	ADV. BILL P/L	WEIGHT	NOTES
				FT	IN					
One	415B1	One	W33x118	30	2 1/2		V50	1/5	3565	
		2	L4x3 1/2 x 5/16	1	8 1/2	AA7			26	
		3	L4x3 1/2 x 3/8	0	11 1/2	AX4			26	
		3	L4x3 1/2 x 3/8	1	5 1/2	AX6			40	
		2	L4x4x1/2	1	8 1/2	ab415			44	
		6	Bolt 3/4" x A325 LIB	0	2	X8				
		7	Bolt 3/4" x A325 LIB	0	2 1/4	X9				
		12	Bolt 3/4" x A325 LIB	0	2 1/2	X10				
One	415B2	One	W33x118	13	10 1/2		V50	1/6	1637	
		4	L4x4x1/2	2	5 1/2	ac220			126	
		2				AX4			17	
		One	BAR5 1/2 x 1/2	2	7 3/8	pa415			24	
		One	BAR5 1/2 x 1/2	2	7 3/8	pd220			24	
		4				X10				
One	415B3	One	W27x94	28	10 1/2		V50	1/15	2714	
		2	L4x3 1/2 x 5/16	1	2 1/2	AA5			19	
		2	L4x4x1/2	1	2 1/2	ac415			31	
		One	L4x3 1/2 x 3/8	0	8 1/2	AX3			6	
		4				AX4			35	
		3	L4x3 1/2 x 3/8	1	2 1/2	AX5			33	
		5				X8				
		20				X9				
One	415B4	One	W18x35	16	6 1/2		V50	2/32	579	
		4	L4x3 1/2 x 5/16	0	8 1/2	AA3			22	
		2				AX4			17	
		2	R5 1/6 x 12 3/4	1	4 7/8	pa225			38	
		8				X7				
		6				X8				
One	415B5	One	W18x35	16	6 1/2		V50	2/32	579	
		4				AA3			22	
		One	L4x3 1/2 x 3/8	0	8 1/2	AX3			6	
		One				AX4			9	
		One				AX5			11	
		3				pa225			57	
		12				X7				
		6				X8				
One	415B6	One	W16x36	15	8		V50	2/48	564	
		One	C12x20.7	15	3	ma415			316	
		2				AA3			11	
		2	L4x3x3/8	0	8 1/2	ad415			12	
		One	L4x4x3/8	0	9	of415			7	
		One	L4x3x3/8	0	7	ag415			5	
		One	BAR2 1/2 x 5/16	0	7	pb415			2	
		2	BAR2 1/2 x 5/16	0	8 1/2	pc415			4	
		3				X8				
		2				X10				
		3	Bolt 3/4" x A325 LIB	0	2 3/4	X11				



CLEANING: SSPC-SP3
 PAINT SPEC: NONE UN
 MAT'L: ASTM A36 UN / WELD: E70XX
 HOLES U.N.: 1 3/16"
 NOTES:
 1. ALL REENTRANT CUTS 1/2 RADIUS.
 2. USE LOW HYDROGEN ELECTRODES @ V50 MAT'L.
 FABARC will detail and/or design connections not furnished on design drawings; however such connections developed by FABARC are only to accommodate fabricating shop equipment and procedures. Responsibility for design of the structure, including design of connections, shall remain with the Architect and Engineer of record. FABARC and its detainers, not being designers of steel, shall have no final design responsibilities whatsoever.
 ALL ERRORS IN FABRICATION MUST BE REPORTED TO THE FABRICATOR WITHIN 24 HOURS FOR DECISION AS TO THE BEST METHOD OF CORRECTION. BACK CHARGES WILL NOT BE ACCEPTED UNLESS OUR CONSENT IS GIVEN IN ADVANCE IN WRITING.

PRINT RECORD		STRUCTURE		COBB COUNTY STATE COURT BUILDING	
		DETAIL		BEAMS	
CONTRACTOR		OWNER		COBB COUNTY, GEORGIA	
ENG. OR ARCH.		HEERY		SHOP ORDER	
REVISIONS		SHEET NO.		5-103 415	
1	2	3	4		
Made BV	Date 12/94				
Chkd DG	Date				