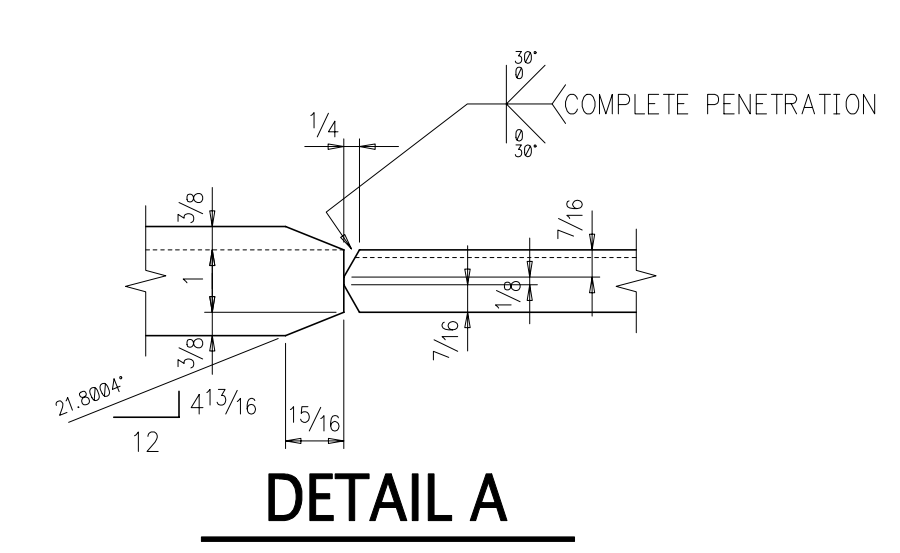
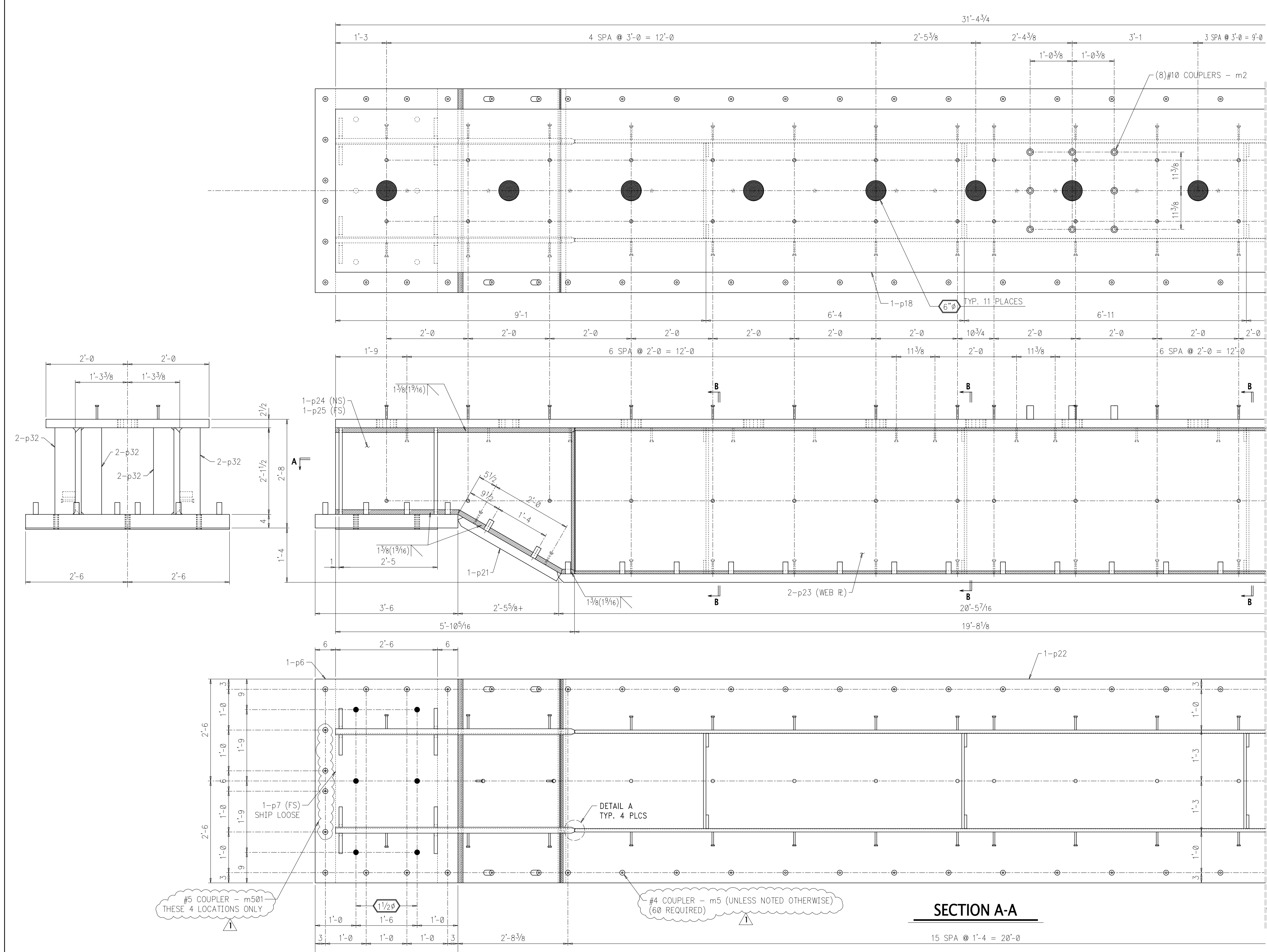


BILL OF MATERIAL

SHIP MARK	SUB MARK	QUAN TOTAL	MATERIAL DESCRIPTION	LENGTH FT IN	MAT'L GRADE	WEIGHT TOTAL	REMARKS
100TG1		ONE	TRANSFER GIRDER			45224	
	p6	2	PL4x42	5 0	A36	5717	
	p7	2	PL3/8x30	5 0	A36	383	
	p18	1	PL2 1/2x48	31 4 3/4	A36	12821	
	p20	6	PL3/4x4	2 4	A36	143	
	p21	2	PL2 1/2x34 1/8	5 0	A36	2951	
	p22	1	PL2 1/2x60	20 5 7/16	A36	10384	
	p23	2	PL1x43	19 8 1/8	A36	5758	
	p24	2	PL1 3/4x43	5 10 5/16	A36	3001	
	p25	2	PL1 3/4x43	5 10 5/16	A36	3001	
	p29	6	PL3/4x4	3 7	A36	219	
	p32	16	PL1x6	2 1 1/2	A36	694	
BOUGHT ITEMS:							
	m2	8	#10 REBAR COUPLER				LENTON "J" GROOVE
	m5	60	#4 REBAR COUPLER				LENTON "J" GROOVE
	m501	4	#5 REBAR COUPLER				LENTON "J" GROOVE
	m6	8	#7 REBAR COUPLER				LENTON "J" GROOVE
	m3	94	HS 1/2	0 4 1/8			



ONE - TRANSFER GIRDER - 100TG1

SHOP NOTE:  
WORK THIS SHEET WITH SHEET 101.  
SEE SHEET 106 - 109 FOR SUBMATERIAL DETAILS.

- SHOP NOTES:
1. ALL REENTRANT CUTS TO HAVE 1/2" RADIUS TYP.
  2. ALL MATERIAL A36 UN.
  3. WELD E70XX ELECTRODES.
  4. \* INDICATES SPOT w/PAINT

SEQUENCE	CATEGORY
---	---
REVISIONS	
1	10/18/01 REWORKED LENTON COUPLERS

FOR APPROVAL				APPROVED FOR FAB			FIELD USE		
REV.	DATE	DATE APPR.	INIT.	REV.	DATE	INITIAL	REV.	DATE	INITIAL

**W.S. Wyllie Steel Fabricators, Inc.**

Structure: VANDERBILT CHILDREN'S HOSPITAL  
 Location: NASHVILLE, TN  
 Customer: CENTEX RODGERS, INC.  
 Architect: EARL SWENSSON ASSOCIATES  
 Detail of: TRANSFER GIRDER

Detailed By: SDLLC Date: 08-01  
 Checked By: S Date: \_\_\_\_\_

Sheet No. 100 of \_\_\_\_\_  
 Contract No. 1583